



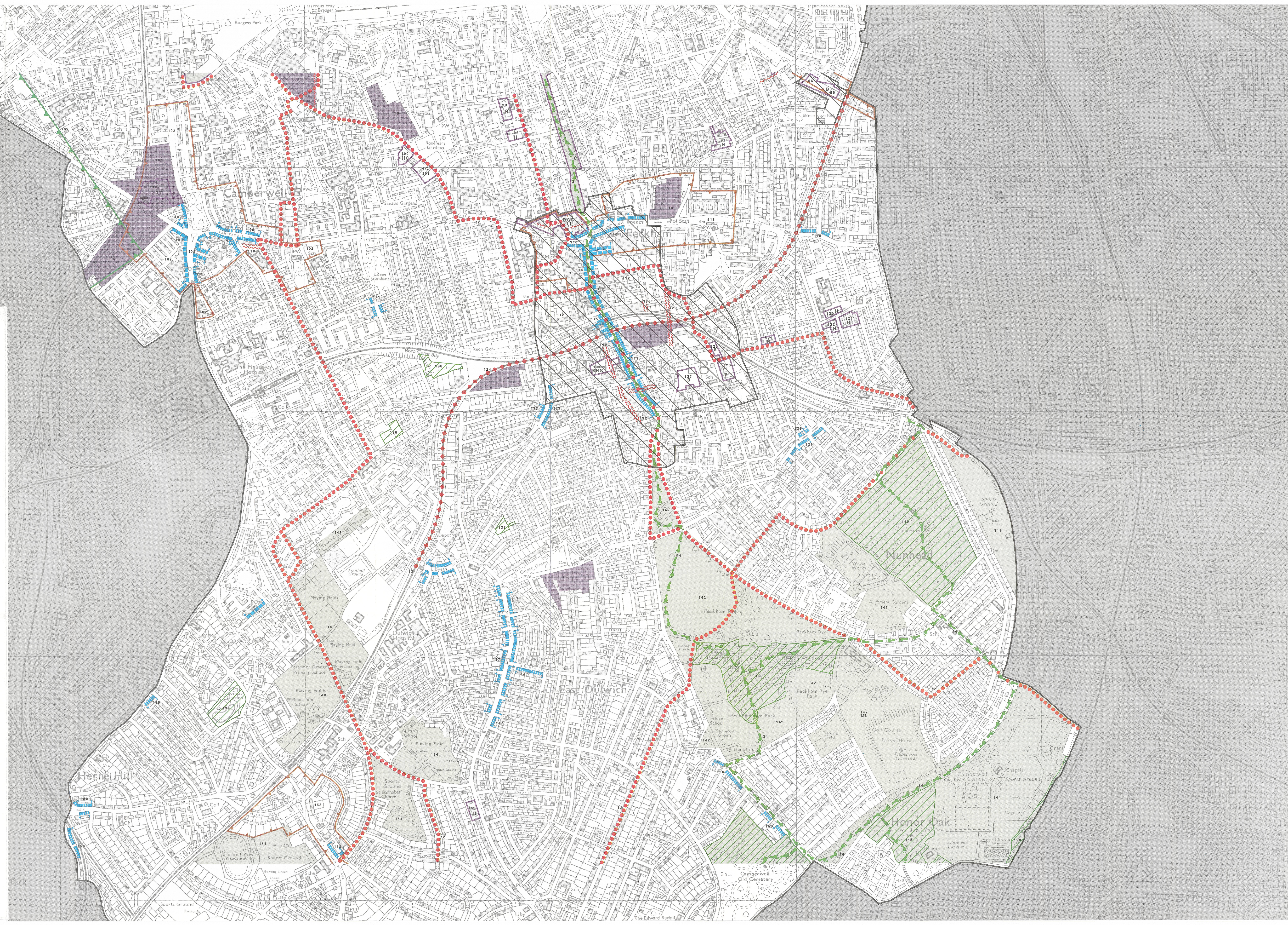
**SOUTHWARK  
UNITARY DEVELOPMENT PLAN  
PROPOSALS MAP  
ADOPTED 19 JULY 1995**

MIDDLE SECTION

(Scale 1:5000)

Planning and Regeneration Division  
Regeneration and Environment Department  
Chiltern House  
Portland Street  
London SE17 2ES

Borough Boundary	
Regeneration Areas	
Employment Sites	
Employment Areas	
Housing Sites	
Shopping Sites	
Primary Shopping Frontages	
Secondary Shopping Frontages	
Community Facility Sites	
Thames Path/Green Chain Walk	
Metropolitan Open Land	
Strategic Views-Backdrop Consultation Zones	
Archaeological Priority Zones	
Sites of Nature Conservation Importance	
East London Line Extension	
Cycle Route	
Safeguarding Lines	
Proposed Station	



Reproduced from the Ordnance Survey map with the permission of the Controller of Her Majesty's Stationery Office.  
Copyright reserved.