

Migrant and Ethnic Economies and Urban Regeneration in Southwark

Patria Roman-Velazquez, Latin Elephant
www.latinelephant.org / info@latinelephant.org

Old Kent Road Community Forum, 1 July 2015



Latin Elephant

- Latin Elephant is a charity that promotes alternative and innovative ways of engaging and incorporating migrant and ethnic groups with urban regeneration processes in London.
- We are working to increase participation of Latin Americans in urban regeneration initiatives in London.
 - Influencing Infrastructure
 - Business Readiness
 - Strengthening Communities
 - Research and Policy

Migrant & Ethnic Economies

- Why is it important to support migrant and ethnic economies in London?
- Why is it important to support migrant and ethnic economies in Southwark and more specifically Old Kent Road?

EMB's & London's Economy - Context

- EMBs an important feature of multicultural urban life - contribution to the UK economy and to community cohesion
- The economic downturn put pressure on retail spaces in local high streets and town centres
- Regeneration initiatives are putting more pressure on SMEs and particularly so for migrant and ethnic economies

EMBs & London's Economy

- EMBs contribute between £25 and £35 billion to the UK economy annually
- EMBs represent 'between 6.7% and 9.3% of the total number of SMEs in the UK' the greater proportion of which are in London
- EMBs employ 1.16 million people in the UK
- One in seven businesses in the UK are opened by migrant entrepreneurs
- In London most business start-ups are from ethnic minorities

Source: Regeneris, 2010 & CfE 2013

Urban Regeneration & Ethnic Economies

- London Plan - urban regeneration includes deprived inner city areas where the proportion of migrant & ethnic populations are one of the highest.

Southwark

- Ethnically diverse, with a high proportion of Black Africans and where a high proportion of Latin Americans
- White British population make up around 40%
- Highly unequal
- The 25th most deprived borough in the country

Southwark's Migrant & Ethnic Economies

Latin American Businesses as a case study

Latin American business clusters across London



Southwark

- Mapping
- Business Survey / Profile
- Research and engagement with retailers – to increase participation and influence policy
- Used this material as evidence to respond to alterations to London Plan - highlight the contribution that migrant and ethnic businesses make to London's diverse economies and spaces.

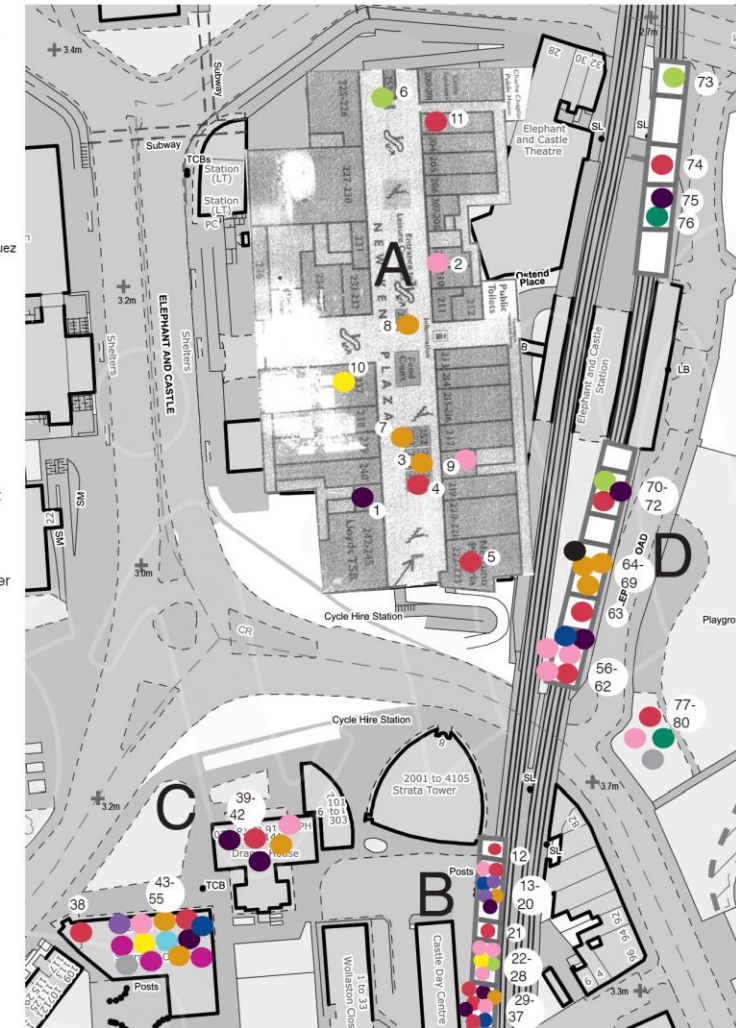
Updated November 2014



Research: Patria Roman Velazquez
Map: Ilina Diaconescu

Key

- Cafe/Restaurant
- Clothes/accessories
- Travel agency
- Food shop
- Games/entertainment
- Dentist
- Film/Music
- Money transfer/Courier
- Hair and beauty
- Auto repairs
- Estate agency
- Computer/Print shop
- Retail
- Translations/Legal



Latin Quarter

A- Shopping centre

B- Eagles Yard

C- Drapers House

D- Elephant Road

Total:
80 businesses

Business directory for Southwark in progress = 110

Cluster A - Shopping Centre

1. Inara Money Transfers (Unit 241)
2. Lucy's Hairdressing Salon (Unit 209)
3. Medellin y su moda (Unit 254-255)
4. La Bodeguita Cafe (Unit 222-223)
5. La Bodeguita Restaurant (Unit 256-257)
6. La Tienda (Unit 259)
7. Alteraciones Nicole's (Unit 253)
8. Ana Castro (Unit 250)
9. Leonis Hairdressers (Unit 218)
10. Viajemos (Unit 237b)
11. Castle Brasserie (Unit 203)

Cluster B - Eagle's Yard

12. Los Amigos (Arch 141)
13. Punto Latino (Arch 143)
14. La Calentia
15. Salud y Vida
16. Videomania
17. Tienda Lucky Shop
18. Sterling Jewellers
19. Native Services
20. Peluquera
21. Corporacion Finca (Arch 144)
22. Arko 146 (Arch 146)
23. El costeno
24. Heladera Oasis
25. Servisell Travel
26. Peluquera
27. Peluquera
28. Amanda's Hair and Beauty
29. San Andreato (Arch 147)
30. Geomi Express UK Ltd
31. Antiplos Coffee Shop
32. Lara Express International Services
33. Alteraciones Erika Alexandra
34. Peluquera
35. Diego CDs
36. Corcora
37. Delicia Lucy

Cluster C - Draper House Sherston Court

38. Sabor Peruano
39. Colombian Fashions (16A Draper House)
40. Cafe do Botado (16A Draper House)
41. Andre & Adam (16A Draper House)
42. Servisell (16A Draper House)
43. Tiendas del Sur (91-95 Newington Butts)
44. Unit 1, Latin Touch Hairdressers
45. Unit 2, Sullivan Travel (since 1979)
46. Unit 3, H&S Legal LLP
47. Unit 4, Casa en Casa
48. Unit 5, LEA
49. Unit 6, A Silva Dental Studio
50. Unit 7, CJ Multicentre Boutique
51. Unit 8, Ku-Yoruba - Santeria
52. Unit 9, Oro Faci Shop
53. Unit 10-11, Aroma de Cafe
54. Unit 12, Money To
55. Unit 13, La Chatica (Surthogar)

Cluster D - Elephant Road

56. La vida loca (Unit 1 Farrell Ct)
57. Costa Dorada Ltd
58. Luz Dary's Nails
59. Video
60. Money Transfers
61. Hairdressers
62. Beauty
63. La Chatica Cafe (Unit 2 Farrell Ct)
64. Arco del Centro (Unit 3 Farrell Ct)
65. Ashley's a Creaciones
66. Topless
67. Chicos Gustavo
68. Diego Computers
69. Elephant Footing
70. Distriandina (Unit 6 Farrell Ct)
71. Tienda de Dulces
72. Planet Services
73. La Fama (103 Elephant Rd)
74. Elephant Coffee (109 Elephant Rd)
75. Botas (113 Elephant Rd)
76. GE Services (113b Elephant Rd)
77. Chatica Cafe (The Artworks)
78. Christian Hairdressers (The Artworks)
79. Carnaval del Pueblo (The Artworks)
80. Colaces UK (The Artworks)

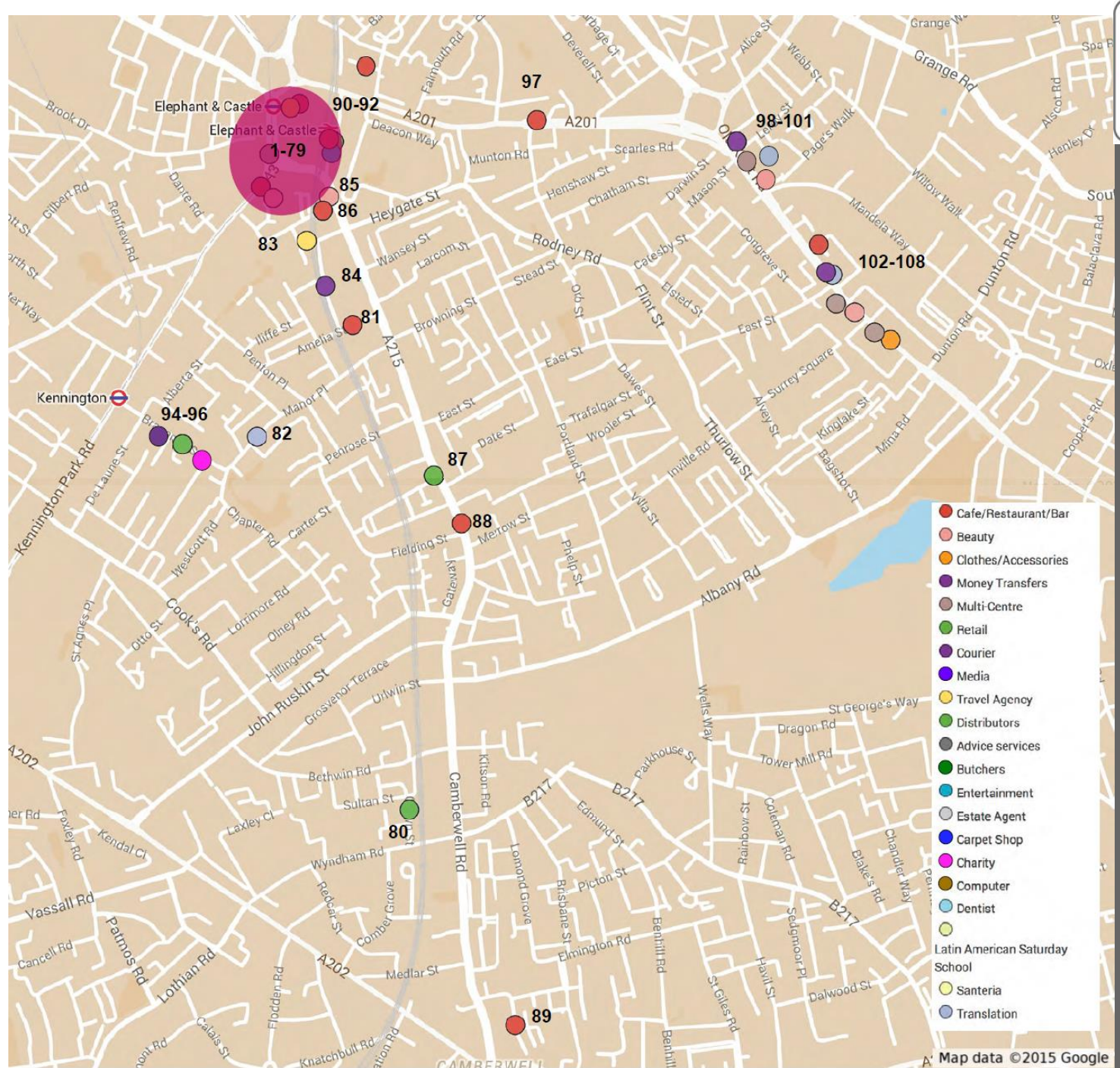
New & Old Kent Road

(Nov 2014)



Total:
9 Premises
(housing
approx 16
businesses)

- 189-191 New Kent Road, SE1 4AG
- 65A Old Kent Road, SE1 4RF
- Unit 2, 65 Old Kent Road, SE1 4RF
- 65A Old Kent Road, SE1 4RF
- 65 Old Kent Road, SE1 4RF
- 157 Old Kent Road, SE1 5UT
- 179 Old Kent Rd, SE1 5NA
- 187 Old Kent Road, SE1 5NA
- 204 Old Kent Road, SE1 5TY
- 206 Old Kent Road, SE1 5TY
- 224 Old Kent Road, SE1 5UB
- 264 Old Kent Rd, SE1 5UB



Latin American Business Survey = 90



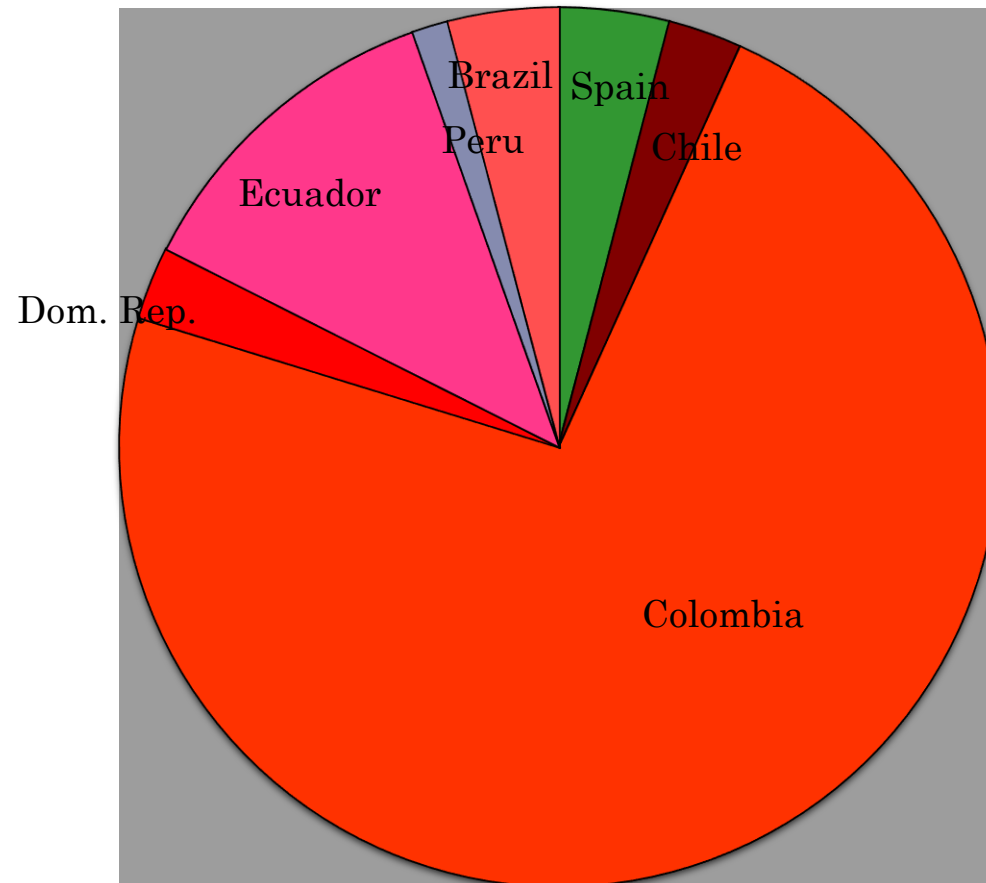
Latin Elephant Survey Data

Spain	3
Chile	2
Colombia	54
Dominican Republic	2
Ecuador	9
Peru	1
Brazil	3

Nov 2014

Nationality - Reported by owner

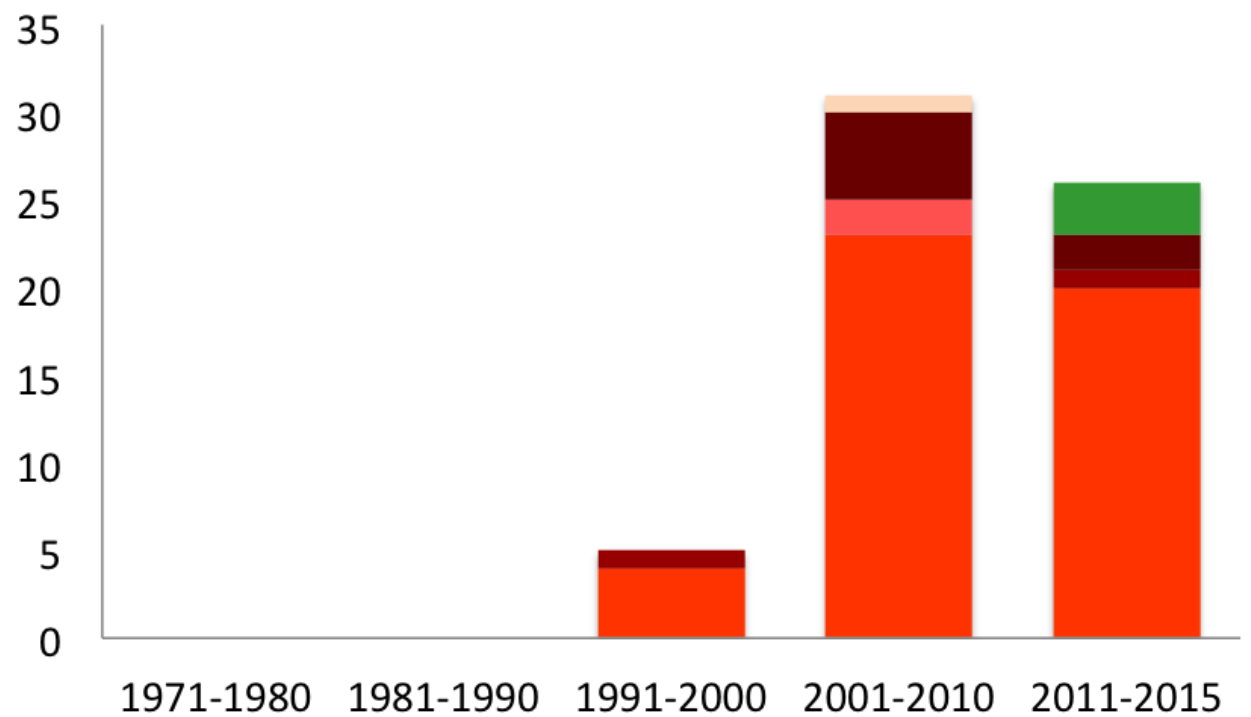
Nov 2014



Year of Shop Opening

(Nov 2014)

- Spain
- Peru
- Ecuador
- Chile
- Brazil
- Colombia



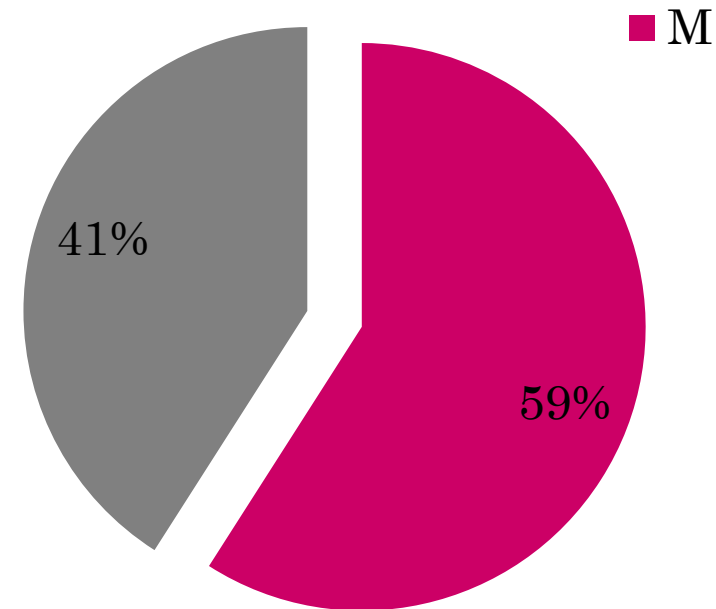
Latin Elephant Survey Key Findings

- 80% of respondents reported customers were mostly or entirely Latino.
- Majority of businesses are SMEs employing 1-5 people.
- Women play an active role in enterprise within the Latin community.
- Some businesses are husband/wife joint ownership.

Comment from a business owner:

The Latin people will not want to leave the Elephant, we are a strong, supportive community here. I work hard all day, but I enjoy what I do and make sure that everything I make gets used, we give away what we can to the hungry when they ask for it. We help each other.

Gender of business owners



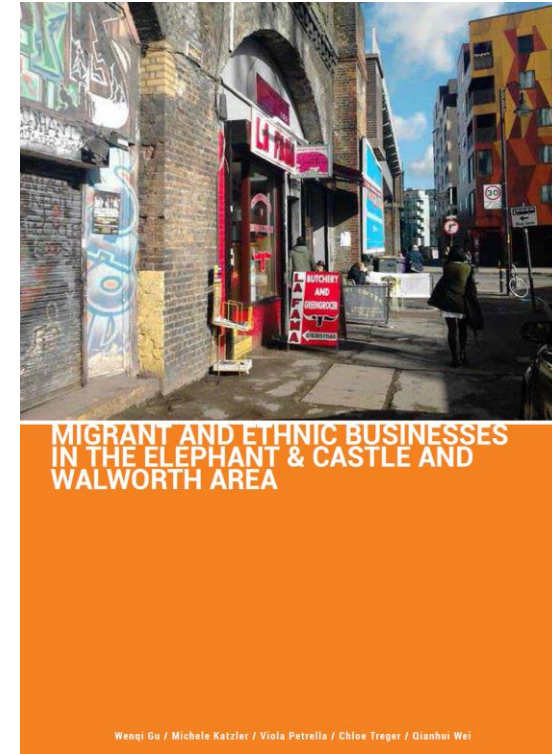
Southwark's Migrant & Ethnic Economies

Old Kent Road

Research for EWNF

Migrant & Ethnic Businesses Report

- Mapping, business directory and research for EWNF in collaboration with LE and UCL students
- Latin Elephant's survey and methodology was used to secure consistency across data and make a stronger case about migrant and ethnic businesses in Southwark.



Report by UCL Students Wenqi Gu, Michele Katzler, Viola Petrella, Chloe Treger, Qianhui Wei (2015).

Available at:

http://issuu.com/chloetreger/docs/final_report_on_meb_for_ewnf_by_uc

Old Kent Road Independent Business Directory

April 2015

Research: Patria Roman Velazquez
Map: Ilinca Diaconescu

135 Independent Shops
out of a total of 146



- Key**
- Cafe/Restaurant/Bar
 - Clothes shop
 - Travel agency
 - Food shop
 - Barbers
 - Surgery/Dentist/Chemist
 - Books
 - Money transfer/Courier
 - Hair and beauty
 - Car Wash/ Filling Station
 - Phone and computer repairs
 - Home and furniture
 - Food takeaway
 - Launderette/Dry Cleaners
 - Betting Shop
 - Pub
 - Newsagent
 - Post Office
 - Supermarket
 - Community



Findings of MEB Report: Old Kent Road

42% of ownership African descent



- Korea, South
- China
- Vietnam
- Thailand
- Bangladesh
- India
- Sri Lanka
- Nepal
- Pakistan
- Afghanistan
- Azerbaijan
- Turkey
- Syria
- Lebanon
- Cyprus
- Bulgaria
- Poland
- Slovakia
- France
- Spain
- United Kingdom
- Africa
- Algeria
- Ethiopia
- Somalia
- Uganda
- Ghana
- Nigeria
- Bolivia
- British Virgin Is.
- Chile
- Colombia
- Dominican Republic
- Ecuador
- Jamaica
- Peru
- Brazil

Old Kent Road



Latin Elephant - Key Questions

- What is the impact of current urban regeneration for MEBs?
- What can be done to support settled migrant and ethnic economies and communities under regeneration?

Latin Elephant - Agenda

- Research that accounts for alternative ways of valuing the contribution of EMBs is needed.
- How to include and encourage the participation of MEBs in consultation processes
- Identify constraints and barriers to inclusion.
- Identify needs to support sustainability of EMBs throughout and after regeneration