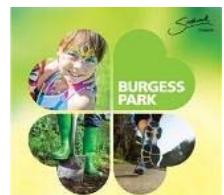

westco



Burgess Park Southern Entrance Project, Initial Consultation 2014/2015

1. Introduction

1.1. Burgess Park Revitalisation

Burgess Park occupies 56 hectares of common land in a diverse, densely populated area of Southwark with high levels of deprivation (within the top 10% in the country).

In 2012, the park was re-opened after being closed for phase 1 major works. During this phase, £8 million was invested in the park: this provided a new play area, extended lake, improved wildlife areas and gardens, two barbecue areas and new topography and layout in the park. Phase 2 involved the installation of a national standard BMX track, which was opened in 2013 and is valued at £1.1 million. Southwark Council is now consulting on the third phase of improvements to Burgess Park.

Burgess Park 'Southern Entrance' Project

Phase 3 improvements to Burgess Park include a project that we are calling the 'Southern Entrance.' This includes the south-western section of the park which is closest to Camberwell town centre, as well as Rust Square, a section of New Church Road and surrounding parkland (see Appendix D). During the first two phases of the park's revitalisation, no changes were made to the Southern Entrance Project site: there is, therefore, an aspiration to bring it up to the standard of the rest of the park.

1.2. Objectives of Consultation

Public Consultation Part 1 – November 2014 to January 2015 (completed)

Southern Entrance and Toilets

- Present two concept designs for the Southern Entrance Project.
- Present two concept designs for new toilet facilities.
- Park users to choose between concept designs for each of four key areas in the Southern Entrance Project.
- Park users to choose between two concept designs for toilet facilities.

Public consultation Part 2 – February 2015 to May 2015 (proposed)

Southern Entrance Project

- Present updated final concept design for Southern Entrance Project.
- Collect feedback on final concept design.
- Make amendments to design before putting forward final proposal.

2. Executive Summary

2.2. Southern Entrance Project

The project to improve the south western section of Burgess Park was popular, with only a very small percentage of respondents disliking the concept designs. Of the two design concepts presented, concept two was more popular. Park visitors were asked for their opinion on the four key geographical areas making up the Southern Entrance Project site (see appendix C). Concept two was the more popular in each of these areas, and markedly so in areas A (Rust Square), B (the open space adjacent to Rust Square) and D (the nature area).

In summary:

- With regard to area A (Rust Square), more respondents to the survey mentioned that they were in favour of integrating the square with the rest of the park rather than keeping it separate. However at the public meeting the majority wanted Rust Square to be separate. Nobody objected to having a play area but some thought it was not the correct location and it should be further from residential properties. Opinion on the water feature/fountain was divided, with slightly more people preferring not to have a water feature/fountain.
- Comments about Area B highlighted that some people feel winding pathways would make cyclists travel more slowly, and that there is concern from nearby residents about antisocial behaviour which has occurred here in the past. Despite a BBQ area not being proposed for this location, many respondents mentioned that they would not like one. There was some support for natural play equipment.
- In the case of area C (the central open space), slightly more respondents mentioned that they think cyclists and pedestrians should share paths, but there was also support for separate paths. Generally people did not want additional paths.
- With regard to area D (the nature area), results clearly show support for a new lake/pond in this area. There was also support for removing New Church Road from within the park.

More than 80% of respondents were opposed to the idea of the Wells Way underpass being reserved for cyclists' use only. There was support for a new crossing on Wells Way and for a new bandstand or performance space, but the support was not overwhelming. Although there was some support for a new BBQ area, many people objected to it, and comments reflect that the location is an important factor.

3. Background

The first part of the Burgess Park Phase 3 consultation was both an engagement exercise and a means of collecting park users' opinions. Quantitative data was captured using surveys (one about the master plan, another about the Southern Entrance project), and free text boxes allowed for qualitative data capture on the surveys, bolstered by five facilitated consultation events, four with the public and one with sports representatives. Exhibitions of proposals in Burgess Park and Peckham Library ensured that park users were continuously engaged throughout the consultation period.

3.1.2 Southern Entrance Survey

A second, more focused survey was designed to give park users a choice between two concept designs for the Southern Entrance site. This survey was launched a couple of weeks after the master plan survey.

As with the master plan survey, an online version of the Southern Entrance survey was advertised through an email newsletter and hard copies were distributed at two exhibition stands with displays of the Southern Entrance concept designs (see Appendices E and F). Spanish versions of the survey were made available at the exhibition stands and translations of the survey to other languages were available on request.

In total 53 people filled in the Southern Entrance survey online. There were no hard copies of the survey filled in. This relatively low response rate may in part be due to 'consultation fatigue' kicking in and/or people mistakenly believing that they had already filled in the survey at the exhibition stand after filling in the master plan survey.

3.2 Exhibitions

Exhibitions of the updated master plan boards were displayed in four different locations during the end of November and throughout December 2014. Exhibitions were held at:

- Burgess Park Tennis Centre
- Burgess Park Community Sports Centre
- A gazebo outside the Park Life café at Chumleigh Gardens (weekends only)
- Peckham Library (temporary exhibition)

Exhibition boards with the two concept options for the Southern Entrance project were displayed at the Tennis Centre and the gazebo outside the Park Life café during December.

3.3 Consultation Meetings

Launch event (18th November 2014): Stakeholders were invited to view and discuss an updated master plan for Burgess Park. Structured table discussions were held during which thoughts about the updated master plan and ideas for Burgess Park were recorded by a facilitator. Feedback forms were also available for attendees to fill in individually. These were collected at the end of the session and processed along with the facilitators' notes.

Approximately 50 people attended the launch event.

Cycling consultation (27th November 2014): Park users were invited to a presentation about Southwark Council's cycling strategy and the likely impact on Burgess Park. Structured table discussions were held. Park users commented on proposed routes and identified any viable alternatives to the proposed routes.

Approximately 25 people attended the cycling consultation event.

Open Space event (29th November 2014): A creative ideas-generation event was held by Wells Way pop-up curators Just Jones &. Park users were invited to come up with suggestions for topics to be discussed. This audience-led format was designed to be less proscribed in structure so as to cover anything that could be missed in other sessions.

Approximately 20 people attended the Open Space event.

Southern entrance/toilet provision (2nd December 2014): Park users were invited to a presentation on the two concept designs for the southern entrance project and were also presented with two options for toilet facilities planned to be installed near the lake in Burgess Park. Structured table discussions were held and attendees asked to choose between the southern entrance and the toilet concept designs.

Approximately 20 people attended the southern entrance/toilet provision event.

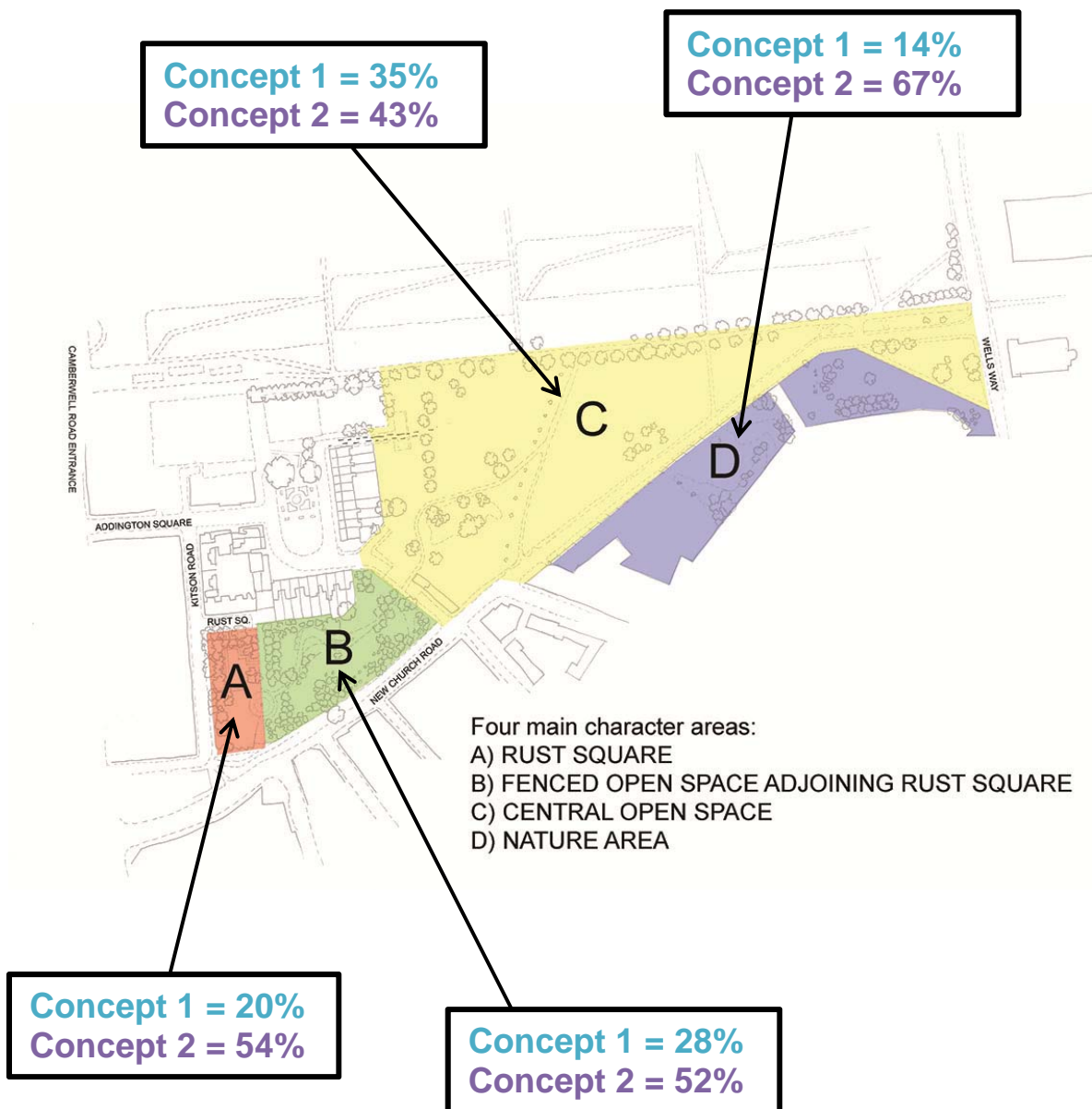
Sports facilities (12th January 2015) Sports teams in Burgess Park were invited to discuss their vision for sports in Burgess Park. Each attendee completed three statements about how they would like to see sport developed in Burgess Park and the discussed two proposals for developing sports facilities within the park.

Approximately 15 people attended the sports facilities stakeholder meeting.

NB: A meeting was also held with the London Wildlife Trust. This was not facilitated.

5. Southern Entrance Project

5.1 Overall Preference



NB: Percentages above do not add up to 100% because other options for answering the questions were available for each question: 'I like elements of both concepts', 'I do not like either concept' and 'no preference'. A full breakdown of scores for each of the key areas can be seen on the subsequent pages.

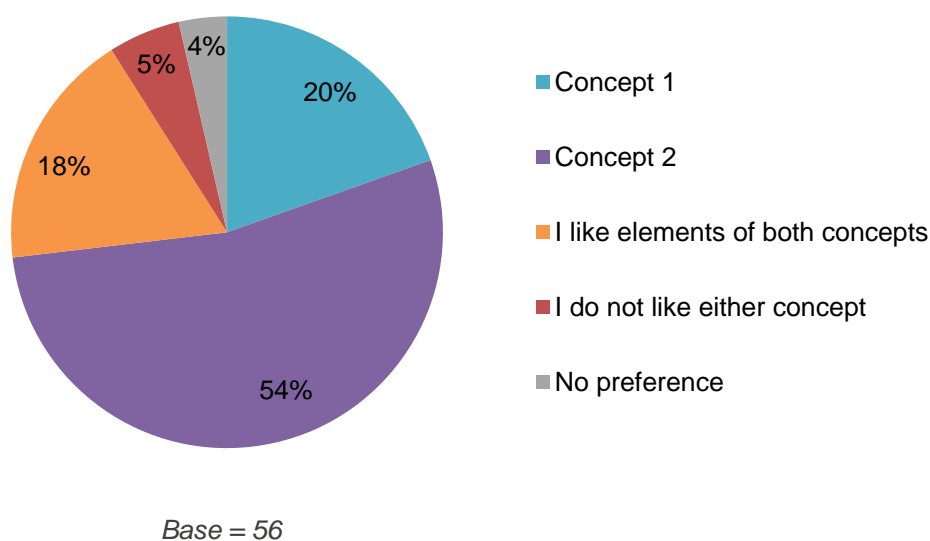
5.2. Area A: Rust Square

5.2.1. Survey Findings

“Please indicate whether you prefer the proposals put forward in Concept 1 or Concept 2 for improvements to Rust Square.”

Concept 1 - Keep the existing open space and trees. Refurbish the brick walls and surfacing, keep the internal railings and add raised planters, seating and possibly a water feature.

Concept 2 - Remove existing brick walls, surfacing, internal railings and brick built gate pillars. Add boundary railings to the square. Keep the existing trees and create a grassed valley play area.



5.2.2. Free Text Comments from Survey

There were 19 free text comments left for Area A. All are listed below.

In summary of the comments, more respondents mentioned that they were in favour of integrating Rust Square with the rest of the park, with only one preferring it is kept separate. Everyone was in favour of having a play area but some people questioned the location, preferring it to be further from residences. Opinion on the water feature/fountain was mixed, with slightly more preferring not to have a water feature/fountain.

“The existing area feels really dated and uninviting. What you have done with the rest of the park is so successful it would be better to integrate Rust Sq into the feel of the rest of the emerging park”

“I like the way the square is integrated into the park in concept 2”

“Creating a more integrated and connected space with a water feature would be lovely. Refurbishing the bricks in certain areas would look nicer than replacing them with the metal arches and skew railings put up in other areas of the park which will probably start to look quite dated in the near future.”

“I like entrance in Rust Square (plan2)”

“Are[a] is very dark and parts are uninviting and in the evening feel unsafe at present.”

“The charm of Rust Square and the adjoining green space is that they are ideal for quiet reflection and are off the main thoroughfare of the park.... A far more interesting way to use this space would be to incorporate a sculpture court and changing installation art and maintain the meditative atmosphere and respite it presently provides ... besides the whole park has very little by way of art in a neighbourhood full of artists!”

“For Rust Square I question the value of a water feature in terms of capital cost as well as future maintenance liabilities. As budgets are tight I would favour a refurbishment of the existing paving and expending more money on a well designed and exciting children's play area in the vicinity of the location suggested in Option 2”

“This space would be ideal for a boulevards/ giant chess/ bicycle polo, informal games for adults and children. A mixture of grassy mounds and sandy gravel and some paving laid out to form a giant board game surface. The cycle path to the south needs to be addressed at the same time and some cycle parking included in the design.”

Having a play area is a very good idea. We would like to provide play and sport areas for children and adults (sic) of all ages - not forgetting people (sic) with disabilities and access to sport.

“Integrate play throughout design, not just in specific areas. Water play at cafe never seems to work, why add more expensive detailing to break down.”

“Play area should not be here. Too close to residents living in Kitson Road and Rust Square.”

“You must consider noise for the residents who are very close to this area. There is a huge park - please site the play area further from the homes. Teenagers congregate at night, shouting into the small hours.”

“Would prefer play equipment to be further inside the park and away from the road”

“But without the play area. You must consider noise for the residents who are very close to this area. There is a huge park - please site the play area further from the homes. Teenagers congregate at night, shouting into the small hours.”

“I like the fountains in Concept 1”

“The play area could also incorporate ‘water features’ from concept 1 too”

“What about issues of water waste - is this the best way to introduce water into the area?”

“No water feature, Burgess Park does not have a good track record of keeping water features going. Don't add raised planters.[T]he brick steps look better. This square has a French feel, why not add a boulevards pitch on the raised grass area?”

“It should be more imaginative”

5.2.4 Feedback Received by Email

There were 6 emails received relating to area A. The main points made in these emails are listed below.

In summary, people who emailed in had a strong opinion that Rust Square needs to be refurbished and the existing brick paving should be removed. A petanque piste for games of boules was suggested, which was also suggested in the survey. There was only one objection to a new play area.

“In general, the square only needs refurbishment, enhancing and improving the existing landscaping. For example, the current brick and concrete paving is tired and needs replacing - self-binding gravel would look great. Preserve the large number of trees, mainly London Plane and cherry, in Rust Square which give it such character. The trees

could be enhanced with warm "fairy lights", similar to those in Emma Cons Gardens, opposite the Old Vic in Waterloo. New lamp posts should be of the heritage type, matching the existing ones on Kitson Road."

"Southwark has committed to bringing the Barclays Cycle Hire scheme to Camberwell. Incorporate a docking station into the design of Rust Square."

"Rust Square would make a brilliant place to introduce Petanque to Burgess Park, a game increasing in popularity with Londoners. A set of balls could be kept for hire at the Tennis Centre in Addington Square."

"Please consider carefully the effects of having "stopping areas" just a dozen or two metres from a residential community. The changes to the southern entrance should be to get rid of the awful brick Rust Square and integrate it properly into the park. There should be planting and clear paths to welcome visitors and encourage them through into the main body of the park where the suggested facilities should indeed be available."

"There is already a large playground in the park. The emphasis should be on making it an attractive square rather than a play area, with a complete overhaul and redesign of the paving which is a sad hangover of the 70s/80s. The area at St George's Garden is a great example of how the space could be improved with specialist planting and walkways which could be utilised in and around Rust Square. Covering paths with light sand and stones, as with the main entrances and St George's Garden, greatly improves the feel of the space compared with Tarmac (if that's what's proposed)"

"Rust Square and the existing entrance should be demolished and reconceived in its entirety... the bushes immediately inside the current gates should be removed as they interfere with visibility and create 'lurking' spaces"

5.2.3 Southern Entrance Project Public Meeting (2.12.14)

The general preference for Area A among attendees to the consultation evening was Concept 1:

Below are the main points raised during the discussion about Area A:

In summary, the people attending the public meeting had similar views to those who responded to the survey, except in regards to integrating Rust Square; they would prefer it to be separate.

Integration/Separation

- Majority prefer Rust Square being separate and having its own character.
- The fence would break the flow of people through Rust Square.
- Need for additional entrance on Kitson Rd. as kids will otherwise pull the fence apart.

Play

- Children who live on the other side of the park to the play area in Rust Square won't travel to it.
- The existing play area for older kids doesn't get used much.
- Paddling pool could be included like Brockwell/Ruskin.
- Don't like the idea of the playground in Rust Square. Prefer natural play.

Noise concerns

- Objections to play areas being close to houses due to noise.
- Don't like the idea of the playground in Rust Sq. Prefer natural play.
- A risk of parties in Rust Sq until late that could cause problems.

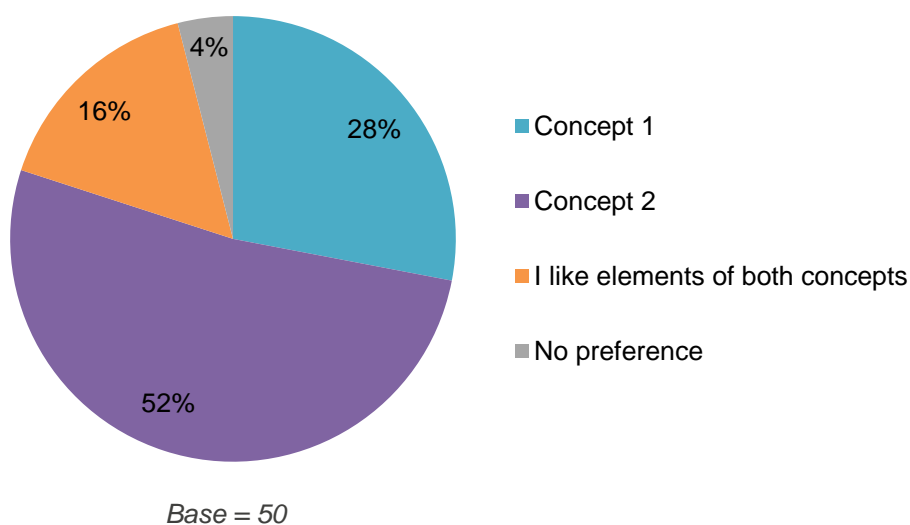
5.3. Area B: the area adjacent to Rust Square

5.3.1. Survey Findings

“Please indicate whether you prefer the proposals put forward in Concept 1 or Concept 2 for improvements to the fenced open space adjoining Rust Square.”

Concept 1 - Keep the existing winding path but upgrade the surfacing. Keep the trees and add natural play features within the open space, new planting and picnic tables.

Concept 2 - Reconnect Rust Square with the park by removing the internal railings and installing a straight footpath through the space forming a clear visual link with the wider park. Add new planting but no play equipment or park furniture.



5.3.2. Free Text Comments from Survey

There were 20 comments related to proposed works in Area B. All are listed below.

In summary, more respondents preferred curved paths and thought that straight paths would cause cyclists to travel faster. There was some objection to a picnic area or BBQ area. There was some objection to having play equipment, but more support for play equipment and suggestion for natural play. More respondents wished this area to become more integrated with Rust Square and the rest of the park.

“Remove all internal railings and include straight footpath”

“Would be nice to reconnect rust square with the rest of the park, but the long straight paths are only good for cyclists. As a pedestrian the park is now less attractive to walk through as the long straight paths are quite dull - all you see ahead of you is more grey path and you're always having to watch out for cyclists going at great speeds.”

“Straight paths are for cyclists not pedestrians - pedestrians spend more total time in the park and more should be done to make their journey and experience through the park interesting and enjoyable rather than feeling like you're on a long straight tred-mill!”

“A more gently curving path rather than straight as it encourages cyclists to speed.”

“We don't want straight lines - it's not that sort of park”

"From concept 1 I like the fact that the cycle route is not completely straight. I know that this is a contradiction with my previous response but I think that this dedicated route along the proposed Quietway should have some bends and features to reduce cyclists' speeds - it also builds in a bit of interest rather than you are plunging headlong along a straight route."

"We must not have any more straight lines of trees- there are far too many as it is. Naturalistic planting in clumps of trees is much more attractive."

"Picnic tables are a great idea"

"No picnic tables or planting required.. this is a nice, quiet, uncluttered space to spread out a picnic blanket. Perhaps some natural willow teepees or rope swings from the trees would be interesting. A clear link to the wider park is not attractive as it would lay the space wide open and ruin the quiet charm and character of the pocket park."

No picnic area or play area. Already a problem with people gathering and making noise in Rust Square.

"[P]icnic tables without toilet facilities could be a problem."

"Concept 1 would be a disaster. Every weekend during the summer of 2014 large groups (20-50 people at a time) gathered for day-long drinking and BBQ sessions with heavily amplified music. They brought trolleys loaded with car batteries to power the noise. Every weekend. Till at least 10 at night. It was a nightmare for residents and "picnic tables" would legitimise this severely anti-social behaviour. Please site such facilities deep in the large park where they won't disturb residents so much."

"I do not want the BBQ area to be located in the area proposed in the Concept. I do not like the BBQ facility that is being offered in Burgess Park. It creates (sic) a lot of mess and issues for other users of the park."

"The link to the refurbished Park should be improved and option 2 offers an opportunity for this upgrade. See my comments on Area A about an enhanced play offer in this area. There should be more reference in the layout and planting concepts to the greater Park. Neither of these schemes are bold enough in developing the concepts and relationships offered by improved links whether visual, physical or ecological to the wider Park. They both feel separate and not fully joined up."

"Natural play is always welcome and must be included for interest."

"Natural playground equipment like stepping stones, a sand pit and a wooden climbing frame would be welcome. Perhaps a small tree house/ platform in the low hung trees behind the last tennis court. The larger open space is used for football quite regularly, and this complements the outdoor gym equipment quite well."

"I like concept 2 but think it should include play equipment further away from Kitson Road because of noise."

"There is enough play equipment already throughout the park"

"Please can there be additional rubbish bin facilities. In the summer many people use this area as a BBQ area and the rubbish left is often a disappointingly large amount."

"Some dog owners allow their dogs to foul in this area at night as they do not want to enter the park - it would be good to introduce dog sand pits near entrances for this purpose."

5.3.3 Feedback Received by Email

There were 7 emails received related to Area B.

In summary, residents adjacent to area B are concerned about antisocial behaviour in the space, which they have experienced in the past.

The detailed points raised were:

"I would like to support... option 2 but with the same concerns about ensuring that everything is done to mitigate the noise, smoke pollution and other anti-social behaviour from parties close to our properties. Any stopping areas

should indeed be in the middle of the park. I would also echo the concerns raised around planting that may impact our statutory right to light. Already our properties suffer from a lack of light due to the large trees close to our properties.”

“[R]esidents (esp on the Southern and Eastern sides) had a really dreadful time this last summer with noise and smoke pollution every single weekend from large groups holding day-long parties in the areas abutting our gardens.. By the evenings the effects of the day-long drinking meant the noise didn't stop till well after dark. Children couldn't sleep. It was horrible. We couldn't use our gardens nor open our back windows for the noise and the smoke.... There are well over a 100 acres of park, most of it well away from residential communities, and it seems almost perverse to consider "official" BBQ areas and picnic tables so close to the Square.”

“One of the proposals suggests potential for a BBQ area close to Addington Square. This side of the park has suffered greatly throughout the summer from abuse by very large groups who meet and cook food. Unfortunately, these groups have consistently demonstrated that they are unable to gather without wheeling out loud speakers to play music and whom often leave a trail of detritus, including food (despite there being bins close by). Designated BBQ areas will further encourage this and in particular, proximity to residential properties has potential to cause further noise pollution for residents.”

“I (and almost certainly my neighbours) would object most strongly to the tree planting along the wall which separates our gardens from the park. As it is, the trees that are there already are cutting out the light and spoiling our gardens. Please alter that part of it. Otherwise I like of the change of line of the path and the plan I.”

“Concept 2 also includes proposals for a possible bandstand and bbq area relatively close to the houses in Addington Square. We are already plagued with smoke, smells and music from this area and this kind of activity should be confined to the body of the Park away from residential accommodation.”

“I should be really very upset if we lost the coppice [behind Addington Square]. It is so beautiful and there is a great deal of wild life, birds etc. (and I hope lesser crested newts) relying on in. Surely a compromise can be reached so that the lower scrub is removed and visibility into the coppice is clear.... The main problem of the drainage in the parking is because the mature trees are no longer there to provide drainage.”

5.3.4. Southern Entrance Project Public Meeting

In summary, people attending the public meeting were of a similar opinion to those who answered the survey, stipulating that they do not wish to have a BBQ area here (this was not suggested in the concept design), and thinking that winding pathways would slow cyclists down. Although there was some support for straight pathways due to the clear sightlines which is important for safety.

The general preference for Area B among attendees to the consultation evening was Concept 2. Below are the main points raised during the discussion about Area B:

BBQ Area

- Against the BBQ area where old stadium was – enough people BBQ-ing already.
- Don't want too many 'hard' things - want it to be more organic and green.
- Not BBQ area – too much noise created by people gathering there.

Play

- Too much noise created from play – disturbs residents.
- Move any play toward the centre of the park. Dispersed.

Straight/winding paths

- Like the 'wiggly' path to extend leisurely walk.
- Winding paths slow cyclists down.
- Straight paths better from a safety point of view – clear sightlines.

- Parents feel more comfortable with their children using parks with straight paths.

Other

- Southampton Way – New Church Rd path could be made smaller, more greenery.
- More formal area provided for matches and games behind Rust Square.

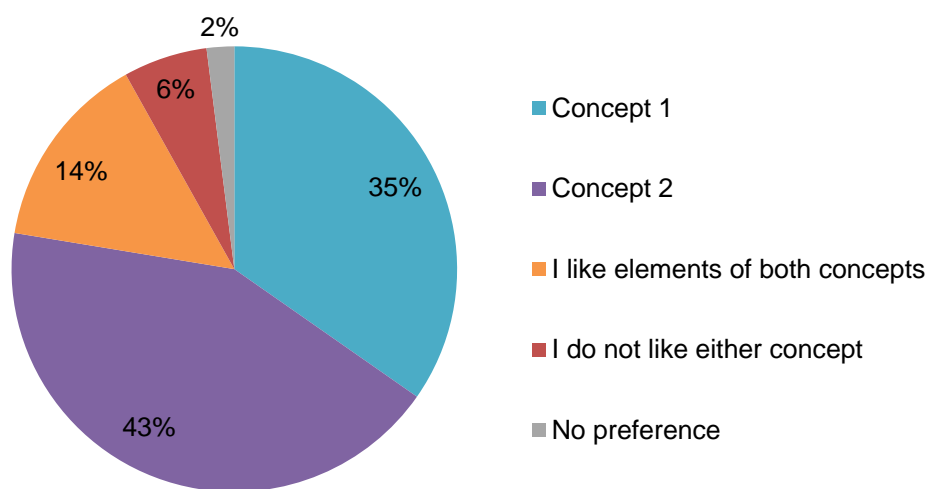
5.4. Area C: the central open space

5.4.1 Survey findings

“Please indicate whether you prefer the proposals put forward in Concept 1 or Concept 2 for improvements to the central open space.”

Concept 1 - The main routes through the park are to be shared by both pedestrians and cyclists. All other new pathways proposed will be for pedestrians only. Existing trees retained, keeping as much open space as possible.

Concept 2 - Add new pathways with pedestrians and cyclists sharing some main routes but separated in others. Plant an avenue of trees linking Southampton Way, Albany Road and the proposed straight path to Rust Square.



Base = 49

5.4.2. Free Text Comments from Surveys

There were 18 comments received related to Area C. All are listed below.

In summary, slightly more respondents mentioned that they would prefer shared pathways for both cyclists and pedestrians but there was also support for separate paths. In general, people do not want too many additional pathways.

“I prefer Plan 1 because it has fewer added paths of which there are too many in Plan 2”

“I like: fewer paths, espec. in so-called Wildlife area- if we are to have wildlife, people should NOT be encouraged into the wildlife area. I do NOT like addition of large numbers of paths.”

“The park has been dug up enough over the past three years”

“Simple and shared path/ cycle links are preferred. The sitting open spaces should be respected and not subdivided by more paths.”

"Please keep the shared areas for pedestrians and cyclists. We have to be aware of each other and respect each person's desired mode of travel. Creating separate areas will be difficult to enforce and encourage greater speed of cycling - as a parent with young kids I worry they will be exposed to faster, less observant cyclists. "

"Remember it's a park and not a short, fast route for cyclists as this will cause friction with other park users - paths should be gently curving and perhaps include cobble strips to discourage speeding. The entrance from Southampton Way to Addington Square is narrow and awkward for cyclists and pedestrians to use simultaneously - this must be made wide enough for both. Currently cyclists are forced to mount the pavement at a point that floods after rain and the surface is very poor."

"No straight lines. Shared paths"

"Cyclist and pedestrian movement to be segregated entirely with low level hedges/planting as dividers when the paths run parallel. This means children and animals can run and play safely... cyclists will also be happy as they can make time! This is a glaring design oversight that ought not be fixed with makeshift solutions. We now have a clear picture of the nature of the different types of users of the park and a thoroughfare must be recognized and treated as one."

"I like option 2 but it will be difficult to separate use of paths."

"Mains routes should NOT be shared by cyclists and pedestrians. This does not work. This should be pedestrian only. Cyclists regularly intimidate pedestrians in this area."

"The speed of some cyclists need (sic) to be brought under control so the park is safe for all users."

"Cyclists and pedestrians should be kept apart as much as possible. So many cyclists use the park - and Southwark, it would seem, are encouraging even more to do so, that those who walk or jog in the park feel threatened."

"While there are some hobby cyclists meandering through the park, there are also others going far too fast. They should be separated for everyone's safety (including their own)."

"I like from Concept 2 - the avenue of trees and the greater amount of planting."

"Lots of little trees are planted but few bushes at ground level so there's little privacy to anyone who wants to sit and relax or sheltered from the wind."

"We need no more straight avenues of trees (sic) - they formalise the park and make it unwelcoming. Please plant trees in natural clumps as much as possible."

"It's sad to see so much being spent on cutting down mature trees cut only to be replaced by much small trees which offer little shade or character to the park"

"Natural playground equipment like stepping stones, a sand pit and a wooden climbing frame would be welcome. Perhaps a small tree house/ platform in the low hung trees behind the last tennis court. The larger open space is used for football quite regularly, and this complements the outdoor gym equipment quite well."

5.4.3. Feedback Received by Email

There was one email received relating to Area C (although 8 emails relating to Wells Way underpass were received – see section 5.6.3.). The main point raised was:

"Plant bulbs in the grass, chosen for maximum season of interest from early spring until summer."

5.4.4. Southern Entrance Project Public Meeting (2.12.14)

The general preference for Area C among attendees to the consultation evening was concept 2. The main points raised about Area C during the discussion are listed overleaf.

In summary, there is concern about cyclists travelling too fast but no clear opinion expressed about whether pathways should be shared or separate.

Shared/separated paths

- Cyclists don't respect the pedestrians on the path/grass – not safe anywhere – improve cycle education in the borough. Cobblestones to slow cyclists down?
- Want to retain underpass but needs to be redesigned – too steep – made longer and lower so that visibility would also be improved.
- Crossing to be a shared 'two-way' crossing as cyclists will use it regardless. Lighting needed on official cycling routes – like low lighting
- There should be more opportunities for people to people to cross Wells Way, it doesn't matter if traffic is slowed.

Avenue of trees to be planted

- Straight lines for dog walking is very good, you can see where you are going and see if there is any potential ASB ahead of you.
- The small hill near Rust Sq should be removed: there is always ASB there which causes problems.
- Southampton Way needs to accommodate cyclists – not practical for cyclists entering the park.
- Need to retain existing trees wherever possible

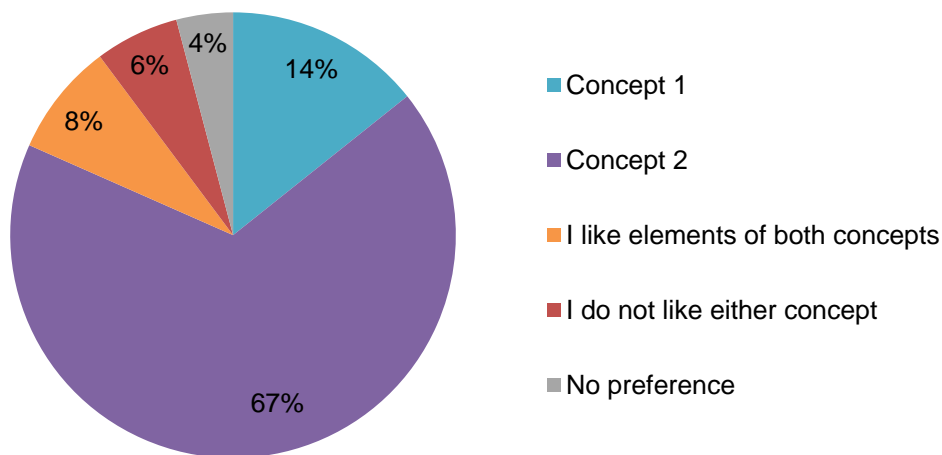
5.5. Area D: the nature area

5.5.1. Survey findings

“Please indicate whether you prefer the proposals put forward in Concept 1 or Concept 2 for improvements to the nature area.”

Concept 1 - Remove New Church Road keeping the existing nature area at about the same size. Add a pond, new pathways, wildflower meadow and tree planting.

Concept 2 - Remove New Church Road and extend the existing nature area in to the park to make it bigger. Add a lake, new pathways taking you through the nature area and plant more trees.



Base = 49

5.5.2. Free Text Comments from the Survey

There were 17 comments received in relation to Area D. All are listed below.

In summary there is support for the removal of New Church Road from within the park, the majority are in favour of a lake, but a few people suggested that it should be smaller, although one felt it was too small to be beneficial to wildlife. Improving biodiversity was also a common theme.

“I like from Concept 2 - the avenue of trees, the lake and the greater amount of planting.”

“[N]ice to create a more natural and sheltered lake area - the other lake is very big and open and not very interesting to explore as you can see everything when you get to the area.”

“A decent sized lake that pedestrians could walk round would be a huge improvement.”

“I love the idea of a second lake. Could an outdoor lido also be considered perhaps for this area or another area of the park?”

“It would be good if this lake was more family friendly, i.e. sail toy boats from a jetty/boardwalk area. Cool a dog in summer, where schools could take classes to learn about water species. Also where willow could be grown and harvested for crafts activities in the park.”

"There is only a small pond in concept 1 which is appropriate for the wildlife area. Another lake is unnecessary and too big for the general area."

"A lake is out of keeping with the smaller area of this part of the park- a pond is more appropriate. But I like the idea of removing New Church Rd and would make as few new pathways as possible. Planting more native trees would be a good idea."

"Pathways through the nature area will make this area less attractive to wild life than it is. A lake is too big for this area - a pond would be much better. Avenues with straight lines of trees are unattractive and too stiff and formal."

"I like the new pond area"

"I agree with removing New Church Road. I do not agree with adding a new lake, this is too small to be effective and will present longer term Management problems. Increasing areas of ecological diversity are welcomed but this should tie into the wider Park strategy and BAP requirements. Areas of damp grassland or seasonal marsh/ wet areas fed by surface water run off are preferred to 'token' ponds."

"Enough lake already."

"I love the lake and I love the wildflower meadow! Just get rid of New Church Rd! I feel that the pedestrian crossing on Wells Way needs to be designed to a reduce carriageway width in that area (but not to the detriment of cycle safety) to change the feel of the space for vehicle drivers. I would also like to see the space designed to ensure maximum speeds throughout the length of Wells Way"

"Concept 2 would greatly increase biodiversity. One of the original aims of revitalising Burgess Park was to bring it up to Metropolitan status for importance for nature conservation. This option brings Burgess much closer to this aim. Also the grass areas north of New Church Rd is used for informal sports and the nature area acts as the toilet so option 2 would reduce the impact of informal sports in this area. Thus another gain for wildlife. also this provides new national priority habitat in Southwark."

"The new crossing on Wells Way is welcomed and needs to be carefully thought through to ensure it offers a welcoming entrance to the Park for all users as well as an alternative to the sub way crossing"

"Path doesn't need to go all the way around lake -make some parts inaccessible for wildlife."

"New Church Road can be converted to a cycle lane rather than the road that it is to extend the nature area. However area C is constantly in use for various activities: football, training, dog exercising, festivals etc and this sort of open space is required on this end of the park. In addition, this is useful as access from Southampton way (less traffic disruption) and parking space when there are larger events, although the size could be restricted."

"Remove the road"

5.5.3. Feedback Received by Email

There were three emails received relating to Area D. The main points are listed below:

"[New Church Road] was built in the 1820s as an elegant approach road to St George's church from Camberwell Road. It features as one of the points on the Burgess Park heritage trail recently created by the Friends of Burgess Park and funded by the National Lottery. It's removal would be a great loss to local heritage... It is fine to replace the old road with a new path, but the route of New Church Road through Burgess Park should therefore be preserved both as a walking/cycling route, and as part of the heritage of the local area and the park (as it is in the current Masterplan)."

"Keep the segregated (sic) cycle route along New Church Road, connecting with Burgess Park at one end, and improving the connection with Wyndham Road (a planned quietway) at the other (e.g using on-street cycle lanes)."

"I favour concept 2 purely on the basis of the lake. The lake on the other side of the park is a great addition and encourages wildlife."

5.5.4. Southern Entrance Project Public Meeting (2.12.14)

In summary, the people attending the meeting generally agreed with the people who answered the survey; supporting the pond/lake and supporting biodiversity.

The general preference for Area D among attendees to the consultation evening was Concept 2. The main points raised about Area D during the discussion are listed below.

Lake/pond

- Would prefer a series of ponds for biodiversity.
- Could have a bigger lake and a few smaller ponds
- One small pond is not enough.
- Lake would be nice to stroll around in the evening.

Paths around lakes

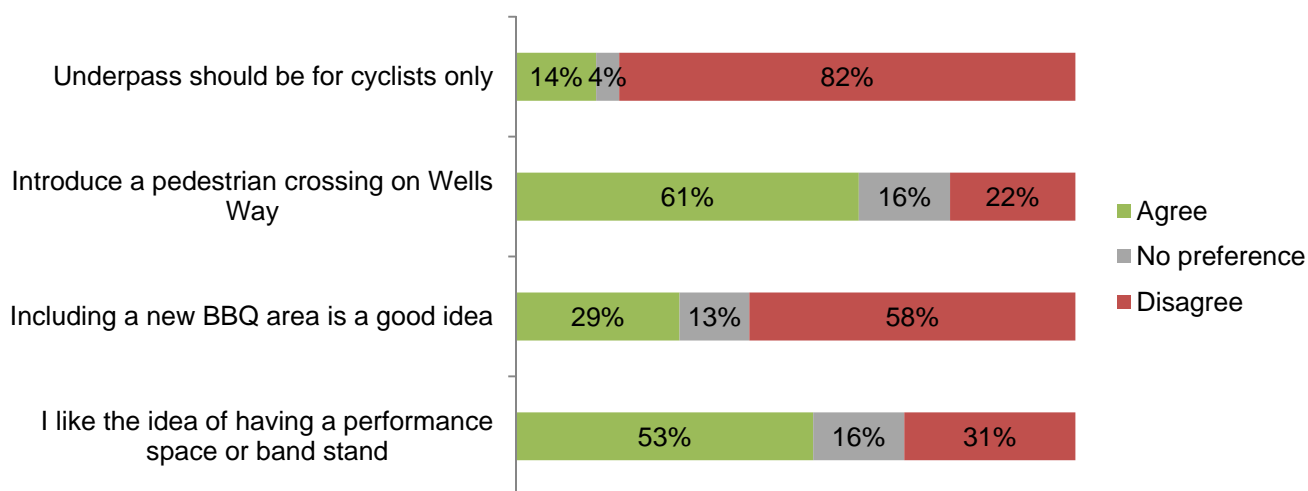
- Natural path around lake or pond – gravel.
- Not good to have paths all around the ponds – protect wildlife and birds so they can have a private area.
- Give kids boardwalks (of shinglebank/sand) to access the pond and the schools can use.

Nature area

- Love the nature area and keeping it as it is.

5.6. Additional Questions

5.6.1. Survey Findings



Base = 49

5.6.2. Free Text Responses for Wells Way Underpass

"The underpass at Wells Way is more suited to dog walkers and pedestrisans (sic) than dedicated cycle use. It is safer for dogs and walkers to be off the road."

"As a dog owner living in Addington Square I know I am not the only dog owner who regularly uses the tunnel under Wells Way with my dog. I would therefore regret very much any proposal that would confine the use of that tunnel to cyclists only."

"I am very much against the underpass being cycle only. As a cyclist and a dog walker the underpass is essential for everyone. Dog walkers rely on it not to have to leave and re-enter the park when crossing Wells Way. All that is necessary is clear signage saying "Cyclists slow down" or similar. These signs were there at one point but have worn off the path. Making the underpass cycle only is unenforceable and will create conflict between cyclists and pedestrians. It will also give cyclists the wrong impression that they have priority throughout the park."

"Keep the underpass shared by both cyclists and pedestrians using 'slow-down' signs for cyclists. Also split the underpass pathway, cyclists on one side, pedestrians on the other."

"Restriction of use of tunnel under Wells Way to cyclists- this will be dangerous for pedestrians as it will encourage cyclists to treat Burgess Park as a race track."

"Let the underpass be used for pedestrians only, and let cyclists use the "secondary crossing". Why should children going to school, parents with push-chairs, dog-walkers, joggers etc be deprived of the safety of the underpass? Why must cyclists have precedence over the majority of park-users?"

5.6.3. Feedback Received by Email about Wells Way Underpass

There were eight emails received relating to the wells way proposals. The main points raised in these emails are below:

"It is not clear from the printouts I've seen whether pedestrians would use the Wells Rd underpass. No other option is acceptable because it would be putting pedestrians, including vulnerable children, at risk crossing Wells Rd. We

won this battle when the last park refit was being planned. It is also a bad idea in that it breaks the park into two, rather than a continuous, park.”

“The underpass should be primarily a pedestrian route I think, and separate lanes for cyclists and pedestrians elsewhere! It is true to say though that I have seen cyclists hurtling through the park at risk of collisions with pedestrians! Walkers shouldn't feel they have to look over their shoulder all the time for fear of getting flattened!”
“I question the logic of devoting the underpass solely to bike use. A number of others have made the case very well and I agree completely. Efforts to organise/direct general pedestrian vs bike traffic through the park need undertaking, but giving over the underpass exclusively to bike traffic will create problems elsewhere I feel.”

“[T]he underpass shouldn't be solely used for either group and in fact shared via a split lane or at the very least slow down signs. Some lighting in the park would help too to avoid collisions. I think both parties can happily coexist within the boundaries of the park, whether it's by having separate lanes or widening the path and some clear signage.”

“I object IN THE STRONGEST TERMS to the idea of dedicating the underpass to cyclists, making pedestrians, including families with dogs and pushchairs cross by the road. Cyclists have to learn that a park is for everyone, not just for cyclists. At the moment cyclists and pedestrians manage to share the underpass so although widening it might make it easier it can still be shared.”

“Last February an idea which I submitted as part of the Borough, Bankside and Walworth Cleaner Greener Safer programme was accepted. The idea was a simple one: to place a barrier, or set of barriers, in the underpass in order to discourage cyclists from going through at great speed (as many of them do) and endangering pedestrians... The proposal is discriminatory - or would be, if it weren't unrealistic. If the idea is that a "secondary crossing" (for second-class park-users?) will divert enough pedestrians to minimise the danger offered by cyclists in the underpass, such an assumption is unrealistic. Most pedestrians - despite the cyclists - won't want to go through the bother of negotiating traffic rather than heading beneath the road.”

“I agree with others who have commented on the proposal to confine the use of the underpass to cyclists. I too use it both as a cyclist and pedestrian and it seem very unreasonable to relegate pedestrians to crossing the road. The best answer is of course to substantially widen the underpass and create enough space to segregate pedestrians and cyclists comfortably. Expensive but the real benefit would be to unify the two parts of the Park.”

“The underpass is essential for cyclists and pedestrians to be able to stay in the park when crossing Wells Way. There is sometimes a little conflict between cyclists and pedestrians/ dog walkers but it could easily be solved by putting clear signs to cyclists saying 'slow down' or 'be considerate to pedestrians'. There was signage but it has worn off the pavement.”

Appendix C – Southern Entrance Project Survey



Southern Entrance Project and toilet facilities

Introduction

Thank you for taking the time to give your opinion on our proposals for the southern entrance of Burgess Park and toilet provision within the park.

The survey is split into two parts:

In the first section you will be asked to choose between two design concepts for the southern entrance to Burgess Park, which is the entrance on New Church Road, Rust Square and the surrounding parkland. As the southern entrance is a large project with many features, we have broken the proposed plans into four 'key areas'. You will be asked to choose between Concept 1 and Concept 2 for each of the four key areas that make up the southern entrance project.

The second section of the survey is about toilet provision in the park. Rather than giving your opinion on specific aspects of the toilet proposals, here you will be asked to make a direct choice between the two options.

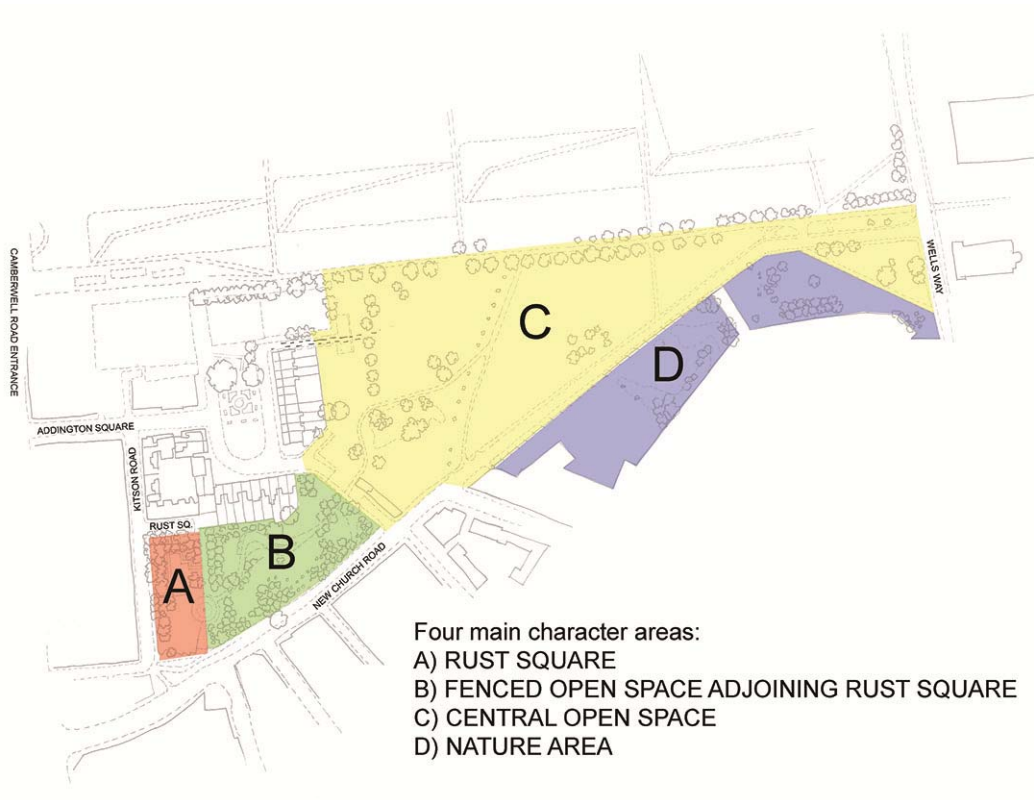
It should take no more than 10 minutes to complete both sections of this survey.

If you would like to request a translation of this survey, or if you have any questions please email Hugh Jordan at hugh.jordan@southwark.gov.uk or call 020 7641 3951 or 020 7525 5133.

Section 1

Southern Entrance

Please have a look at the two southern entrance concept designs.* You will see that both concepts can be divided into roughly four areas.



* The two concept proposals – Concept 1 and Concept 2 – are displayed on exhibition boards. If you are unable to locate the concept designs, please ask a member of staff. They are also available to download from our website at www.southwark.gov.uk/burgesspark Paper copies are available by calling 020 7641 3951 or 020 7525 5133

Southern Entrance - Area A

Please refer to the map on page 2 which shows the location of Area A

Area A - Rust Square

Please indicate whether you prefer the proposals put forward in Concept 1 or Concept 2 for improvements to Rust Square

Concept 1 - Keep the existing open space and trees. Refurbish the brick walls and surfacing, keep the internal railings and add raised planters, seating and possibly a water feature.

Concept 2 - Remove existing brick walls, surfacing, internal railings and brick built gate pillars. Add boundary railings to the square. Keep the existing trees and create a grassed valley play area.

- Concept 1
- Concept 2
- I like elements of both concepts
- I do not like either concept
- No preference

Any further comments on Area A?

Please continue of an additional sheet if needed

Southern Entrance - Area B

Please refer to the map on page 2 which shows the location of Area B

Area B - Fenced open space adjoining Rust Square

Please indicate whether you prefer the proposals put forward in Concept 1 or Concept 2 for improvements to the fenced open space adjoining Rust Square.

Concept 1 - Keep the existing winding path but upgrade the surfacing. Keep the trees and add natural play features within the open space, new planting and picnic tables.

Concept 2 - Reconnect Rust Square with the park by removing the internal railings and installing a straight footpath through the space forming a clear visual link with the wider park. Add new planting but no play equipment or park furniture.

- Concept 1
- Concept 2
- I like elements of both concepts
- I do not like either concept
- No preference

Any further comments on Area B?

Please continue of an additional sheet if needed

Southern Entrance - Area C

Please refer to the map on page 2 which shows the location of Area C

Area C - Central open space

Please indicate whether you prefer the proposals put forward in Concept 1 or Concept 2 for improvements to the central open space.

Concept 1 - The main routes through the park are to be shared by both pedestrians and cyclists. All other new pathways proposed will be for pedestrians only. Existing trees retained, keeping as much open space as possible.

Concept 2 - Add new pathways with pedestrians and cyclists sharing some main routes but separated in others. Plant an avenue of trees linking Southampton Way, Albany Road and the proposed straight path to Rust Square.

- Concept 1
- Concept 2
- I like elements of both concepts
- I do not like either concept
- No preference

Any further comments on Area C?

Please continue on an additional sheet if needed

Southern Entrance - Area D

Please refer to the map on page 2 which shows the location of Area D

Area D - Nature area

Please indicate whether you prefer the proposals put forward in Concept 1 or Concept 2 for improvements to the nature area.

Concept 1 - Remove New Church Road keeping the existing nature area at about the same size. Add a pond, new pathways, wildflower meadow and tree planting.

Concept 2 - Remove New Church Road and extend the existing nature area in to the park to make it bigger. Add a lake, new pathways taking you through the nature area and plant more trees.

- Concept 1
- Concept 2
- I like elements of both concepts
- I do not like either concept
- No preference

Any further comments on Area D?

Please continue on an additional sheet if needed

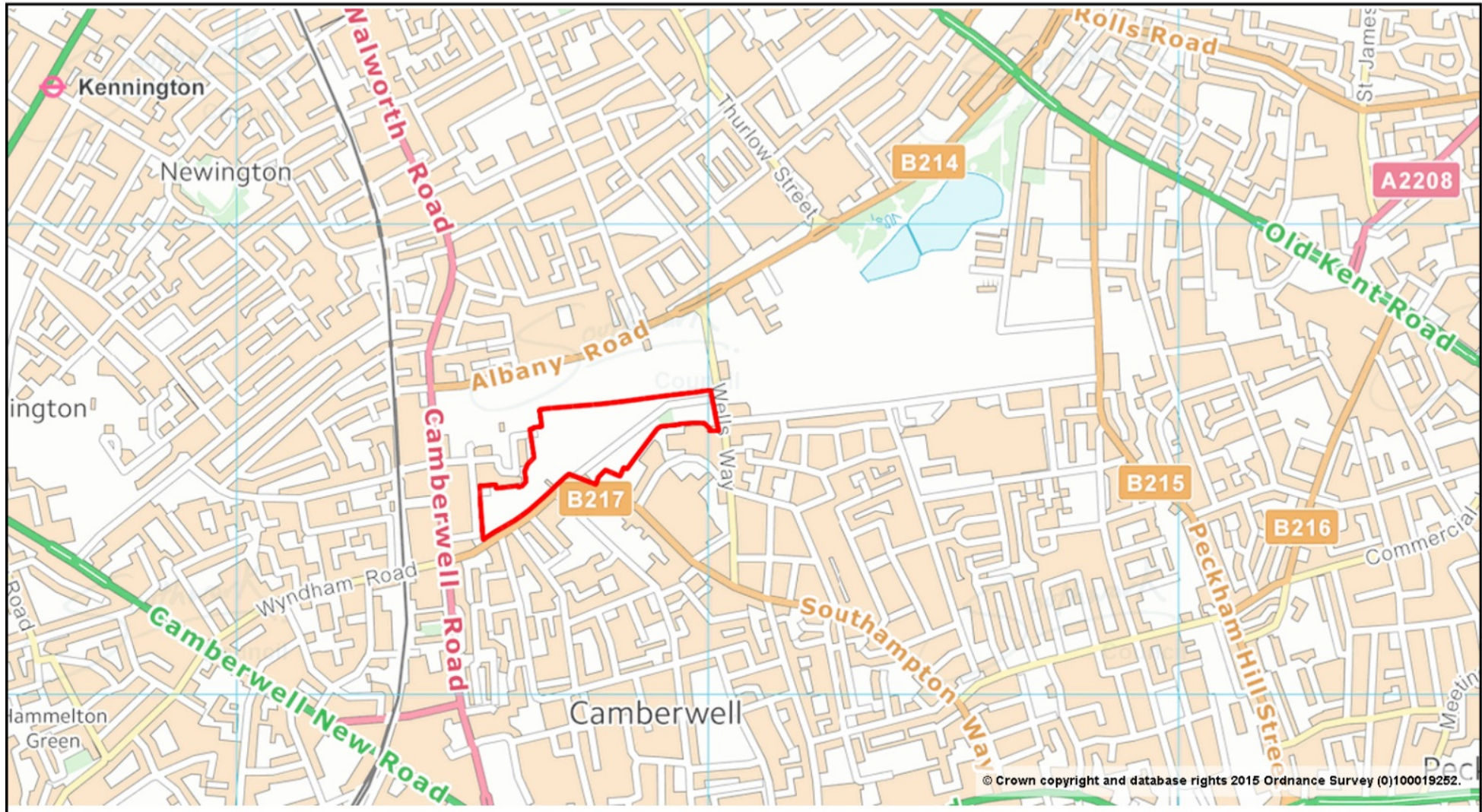
Southern Entrance - Other features

To what extent do you agree or disagree with the following statements? *Please tick one box for each statement*

	Agree	Disagree	No preference
I like the idea of having a performance space or band stand			
Including a new BBQ area is a good idea			
Introduce a pedestrian crossing on Wells Way			
Underpass should be for cyclists only			

Appendix D – Southern Entrance Site Location Plan

The area marked in red below shows the location of the Southern Entrance site in relation to the rest of Burgess Park.



Appendix E – Southern Entrance Design Concept 1



Burgess Park Southern Entrance - Concept 1

Public Realm Division

November 2014

Appendix F – Southern Entrance Design Concept 2

Axonometric showing the existing Layout of Burgess Park Southern Entrance



Scoping area

Proposed character areas



- Existing elements within previous masterplan incorporated within this concept
1. New park entrance at Rust Square
 2. Local play area
 3. Proposed wildlife pond
 4. Tree planting to park boundary
 5. Ecological/wild area

CONCEPT VISION

To protect and enhance the existing nature areas within the Southern Entrance, pulling them into the park for all to enjoy. Introduce a lake with a pedestrian routeway around, increasing biodiversity and creating an educational resource. Connect Rust Square to the park by introducing clear visual links with the aid of a straight footpath off Southampton Way.



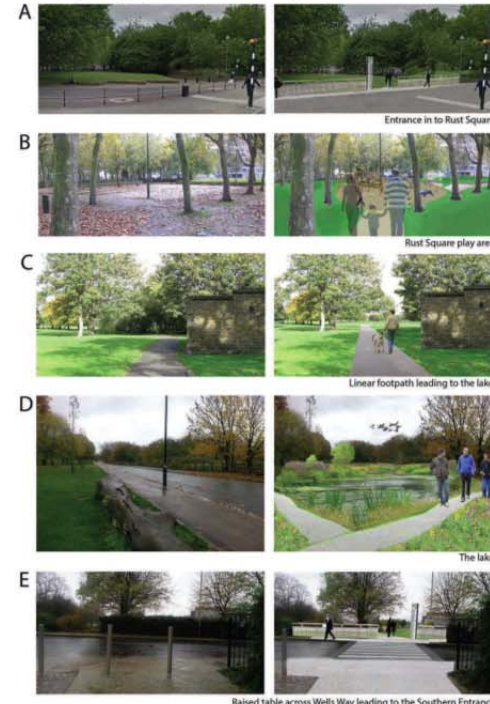
SECONDARY ENTRANCE FOR PEDESTRIANS (includes raised table across Wells Way

EXISTING ENTRANCE FOR CYCLISTS VIA UNDERPASS



Existing photograph

Proposed visualisation



Burgess Park Southern Entrance - Concept 2

Public Realm Division

November 2014