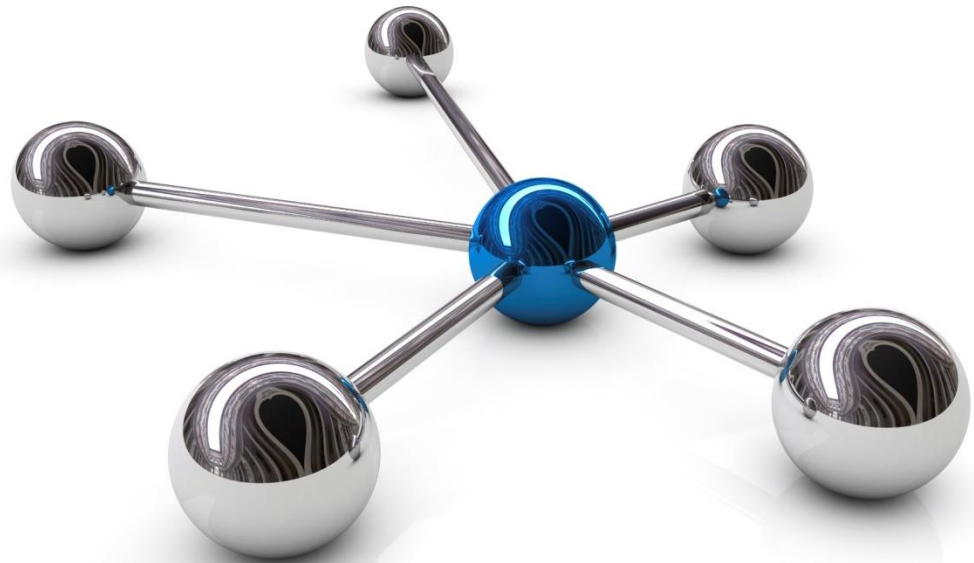


i-Connect

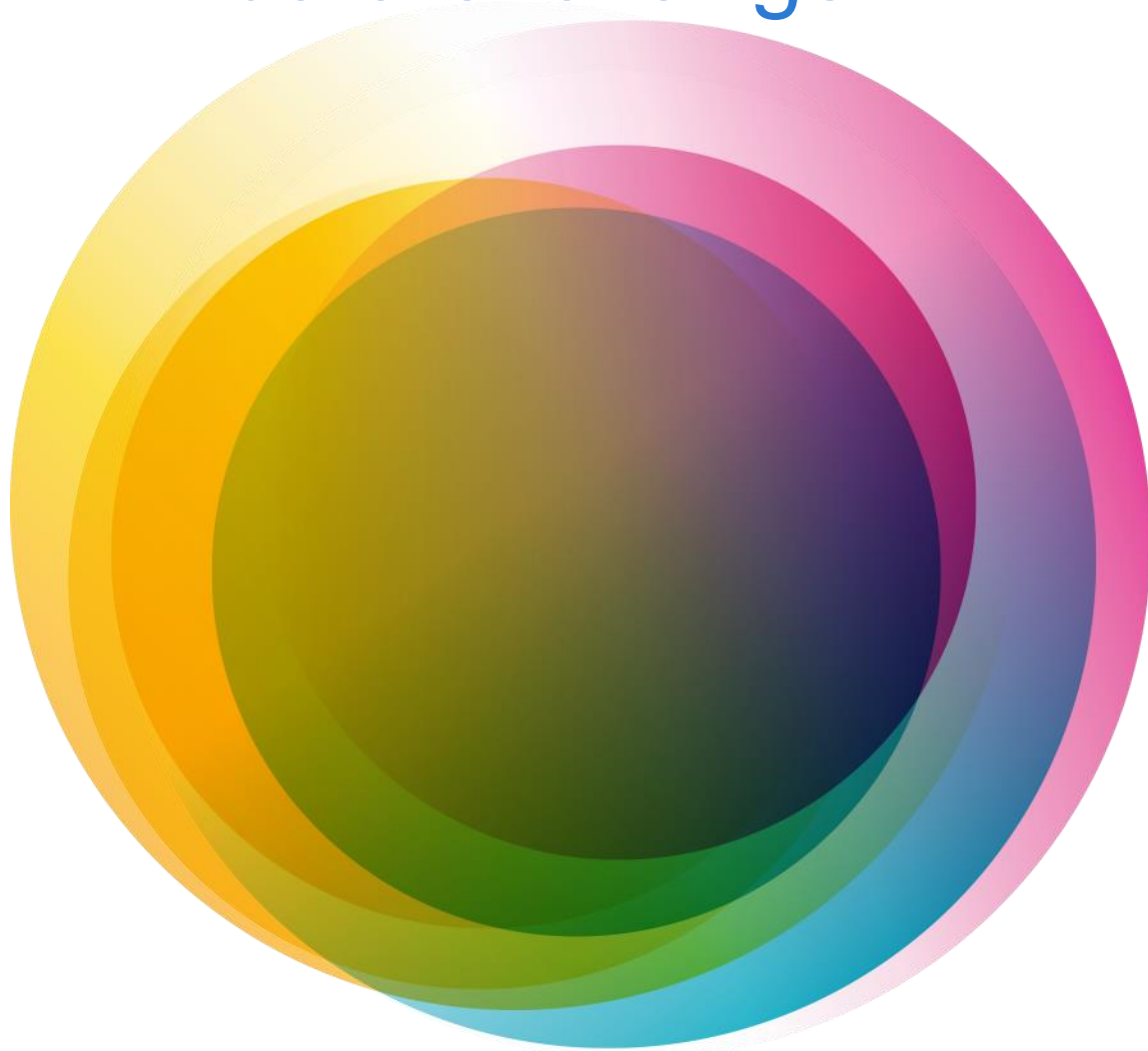


the data exchange solution for the public sector

agenda

- introductions
- data exchange
 - why accurate data matters
 - how is data currently exchanged?
- what is i-Connect?
 - demonstration
- using the system
 - exercise 1:
 - login to i-Connect
 - select members
 - exercise 2:
 - complete your online return

session 1 - data exchange



why accurate data matters



on time pension payments mean an employee's last contact with their employer is a good experience

accurate data for fund valuation results in correct charges being levied on the employers



employees receive correct information on which to make decisions on their pension choices



August 2015

Sunday	Monday	Tuesday	Wednesday	Thursday	Friday	Saturday
						1
2	3	4	5	6	7	8
9	10	11	12	13	14	15
16	17	18	19	20	21	22
23	24	25	26	27	28	29
30	31					

annual benefit statements produced on time and accurately

minimise risk of fines or additional charges



reduce effort expended responding to queries about pensions

game changers



auditors pushing for
move to monthly
reconciliation of
contributions

lowering of tax free
contribution limit puts
more members at risk



automatic enrolment
increased volumes
impacting costs



The Pensions
Regulator

Pensions Regulator
data quality targets for
active members



CARE schemes
require more frequent
and accurate data
submissions

CARE – a step change

- CARE – a whole new concept – Pension Accounts

- separate records for each job – unique ID
- separate records for main & 50:50 sections

- pensionable pay redefined
 - LGPS2014 – new definitions
 - LGPS2008 – retained

- strict deadlines for supply of information
 - new starters
- significant fines for non-compliance
- contribution rate changes per month
- cumulative pay & contributions

STATUTORY INSTRUMENTS

2013 No. 2356

PUBLIC SERVICE PENSIONS, ENGLAND AND WALES

The Local Government Pension Scheme Regulations 2013

Made 126 September 2013
Laid before Parliament 106 September 2013
Coming into force in accordance with regulation 1

CONTENTS

PART 1

Membership, contributions and benefits

<i>Particular Provisions</i>		
1.	Citation, commencement and extent	4
2.	Introductory	4
<i>Membership</i>		
3.	Active membership	5
4.	Restriction on eligibility for active membership	6
5.	Ending active membership	7
6.	Deferred and deferred pensioner members	7
7.	Pensioner members	7
8.	Pension credit and service transfer	8
<i>Contributions</i>		
9.	Contributions	8
10.	Temporary reduction in contributions	9
11.	Contributions during absence from work	9
12.	Contributions during child-related leave	10
13.	Contributions during reserve forces service leave	10
14.	Contributions during absence for illness etc	10
15.	Employer contributions during absence	10
16.	Additional pension contributions	11
17.	Additional voluntary contributions	14
18.	Rights to return of contributions	15
19.	Exclusion of rights to return of contributions	16
20.	Meaning of pensionable pay	17
21.	Accrued pensionable pay	17
<i>Pension accounts</i>		
22.	Pension accounts	18
23.	Active member's pension accounts	19
24.	Deferred member's pension accounts and deferred refund account	20

the regulator calls

monitor

- quality of data
 - accuracy
 - completeness

review

- regular exercises to evaluate and assess data quality

reconcile

- between payroll and pensions
 - starters / leavers
 - addresses

records

- complete and accurate records
- uniquely identify scheme member
- robust procedures for exchange of data

How is data currently exchanged?

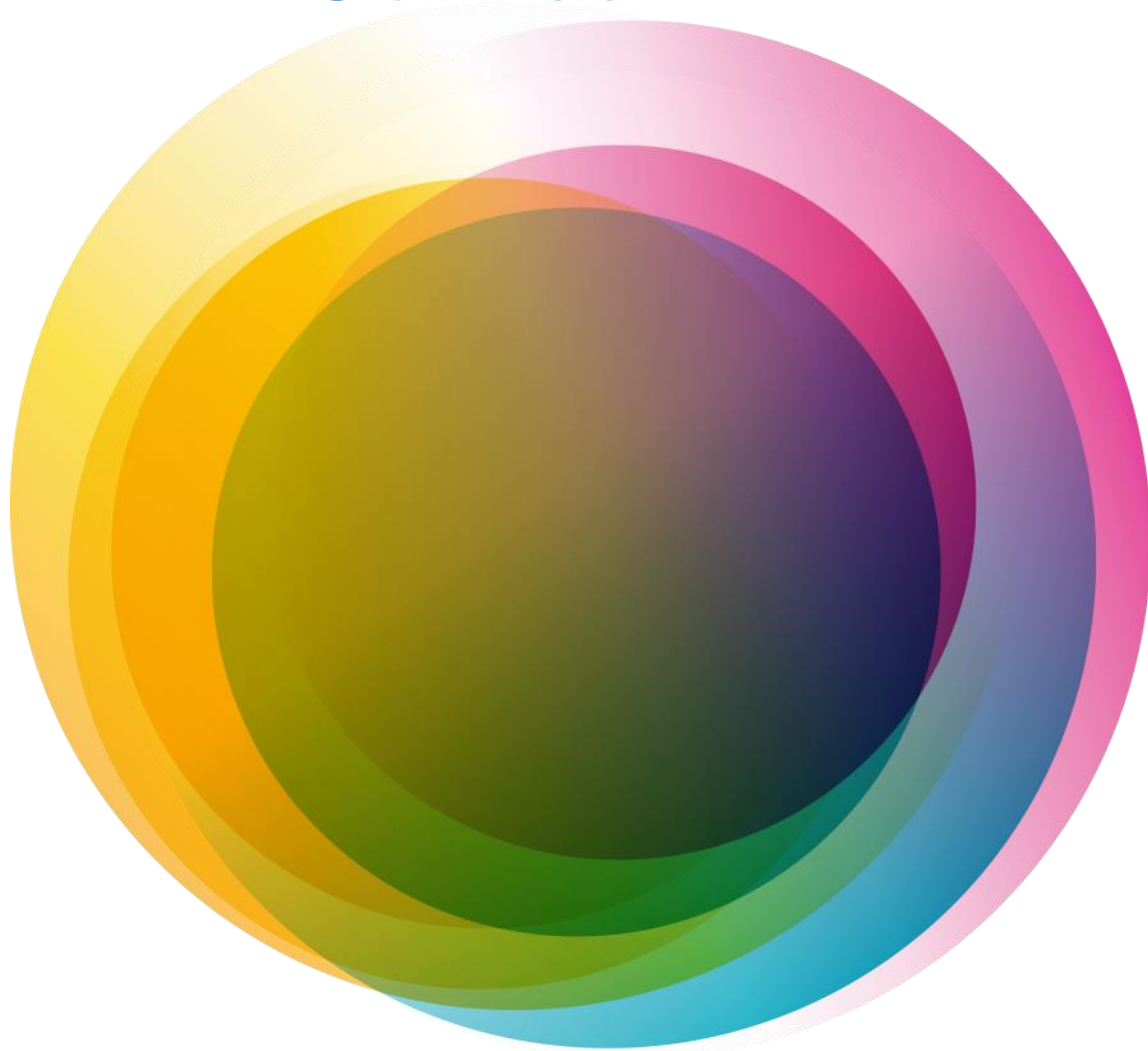


employer provides data

starters & leavers ~ member changes
opt-ins & opt-outs ~ contributions
hours ~ salary

fund processes data

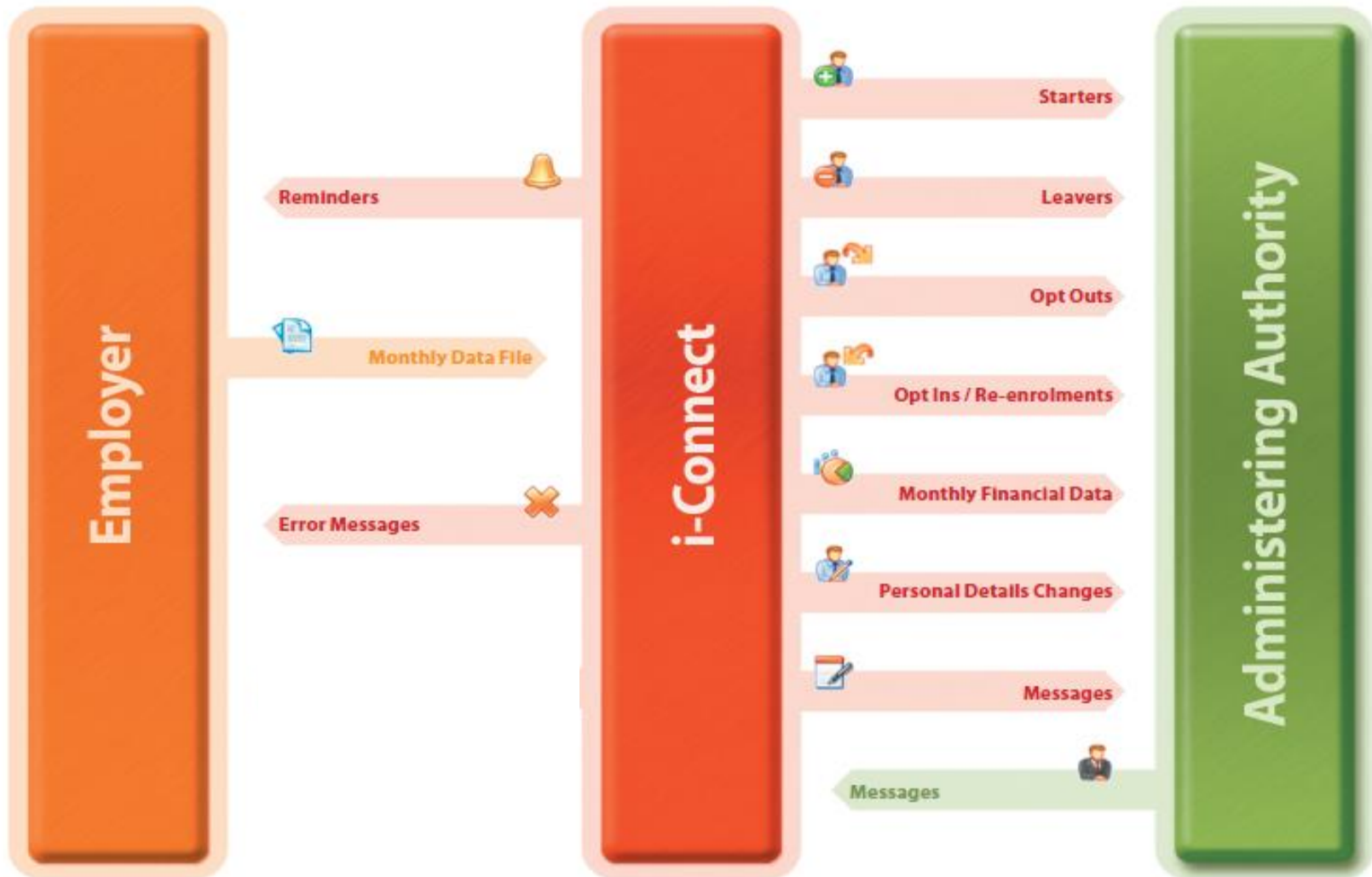
session 2 – i-Connect



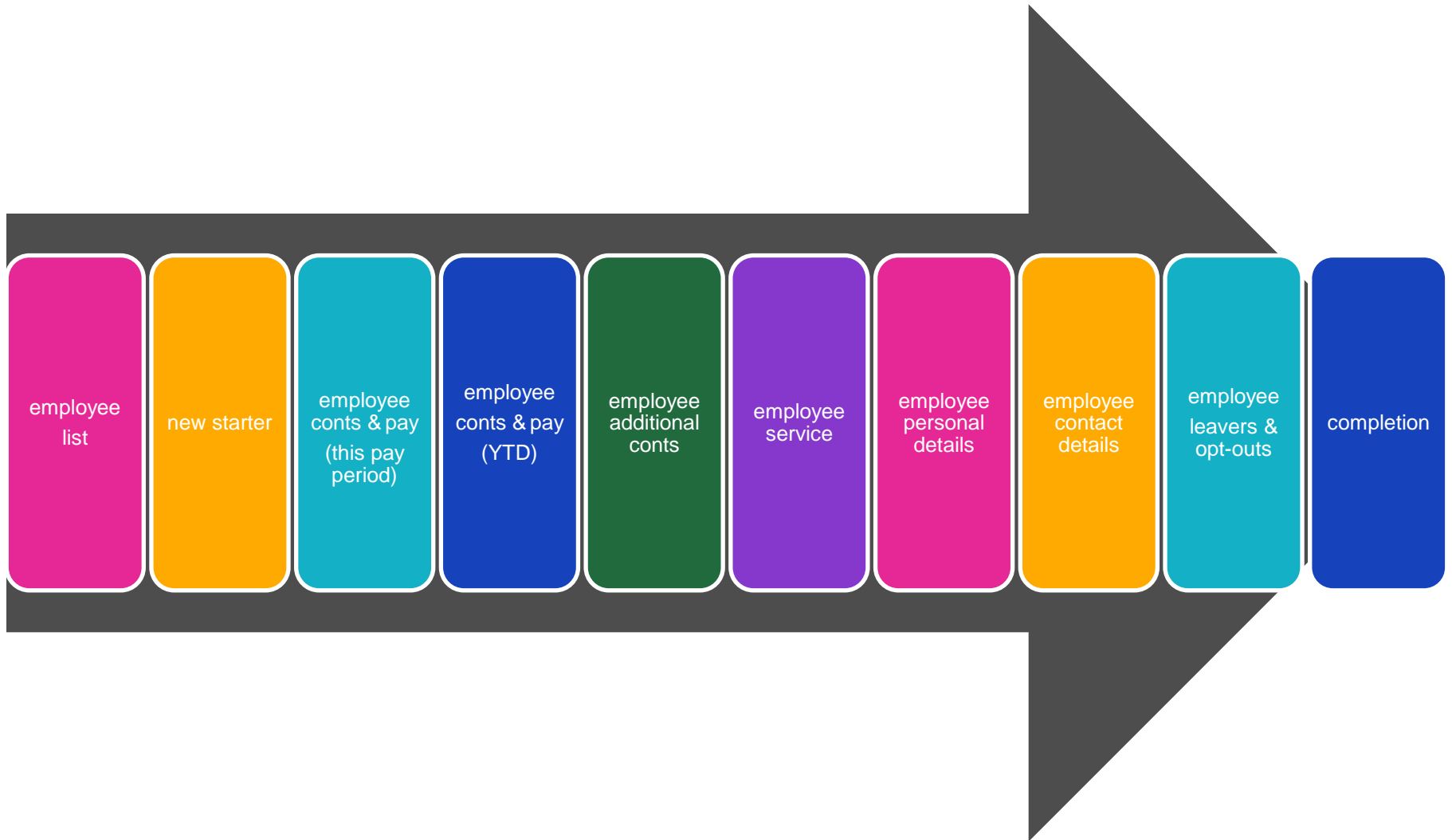
What is i-Connect?

- centrally hosted electronic data exchange system
- secure data transfer:
 - https certified website
 - VPN technology used to transfer data to the administering authority
- two methods of uploading data:
 - payroll extract file upload
 - online return

i-Connect – Payroll Extract File



online return





Demo

online return demonstration

access

- i-Connect URL (<https://app.i-connectdata.co.uk>)
- login
- i-Connect Dashboard

Online
Return

- request/select/confirm members
- synchronise member data

Complete
Return

- add new starter
- add pay & contributions
- complete return – update pension system

Benefits of electronic submissions



Improve process & operational efficiency



Eliminate year-end



Reduce risk

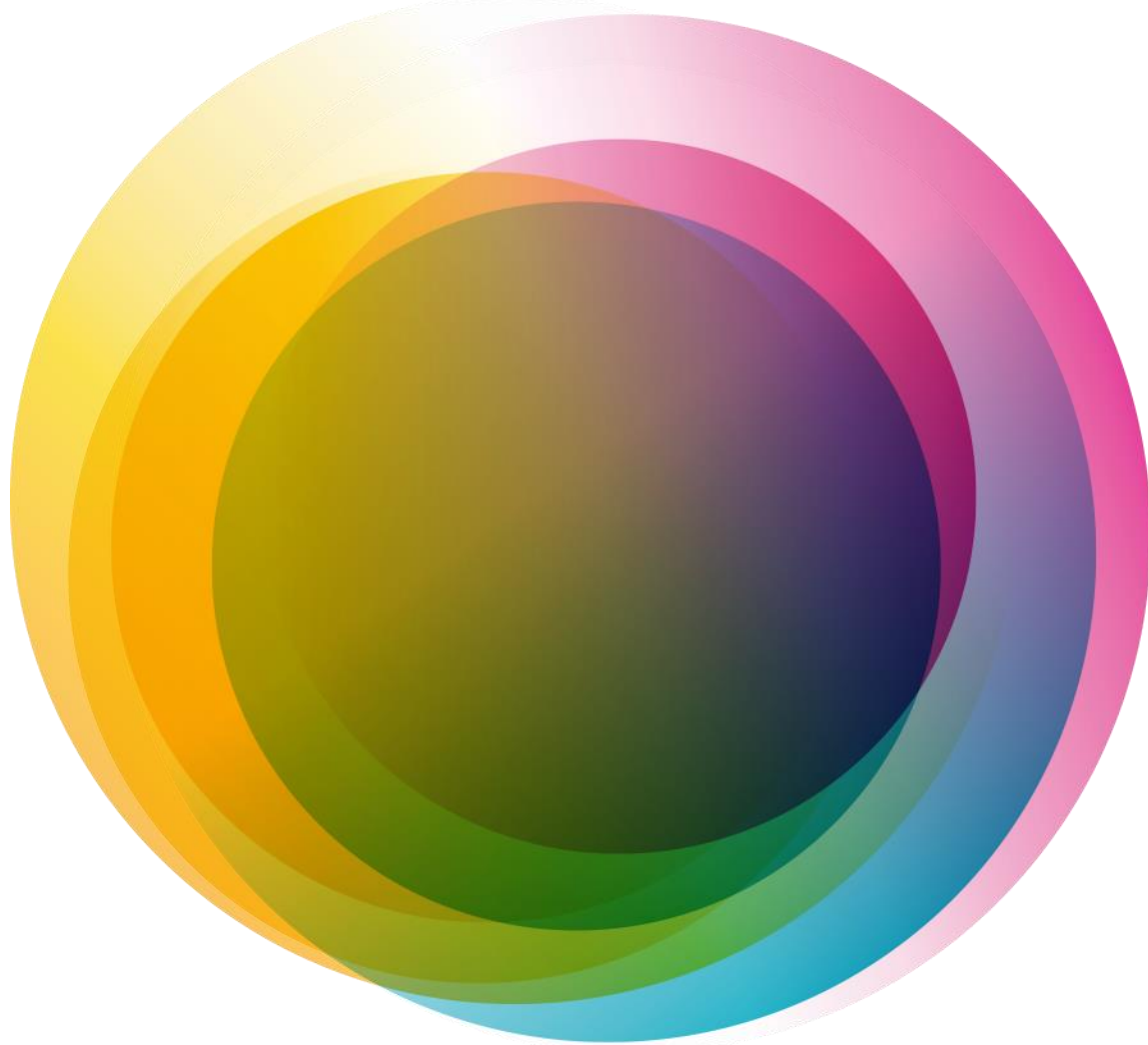


Reduce effort on data exchange



Cost reductions

session 3 - exercises



you should all have:

- user guide
- username and password sheet
- financial return
- 1 x starter form
- 1 x leaver form

exercise 1- login

1. popup Your Computer
2. login to windows with the following Username & Password:
 - login **CLDTrainer2**
 - password **CLDTrainer2**
3. login to i-Connect
 - URL <https://app.i-connectdata.co.uk>
 - please see the sheet provided for your i-Connect username and password

<https://app.i-connectdata.co.uk>

exercise 1- login

Dashboard



Online Return



Reports



Employer



User
Management



History

please raise your hand if you can't see
the online return icon!

exercise 2 – complete your return

perform member selection using your financial return



create the new starter



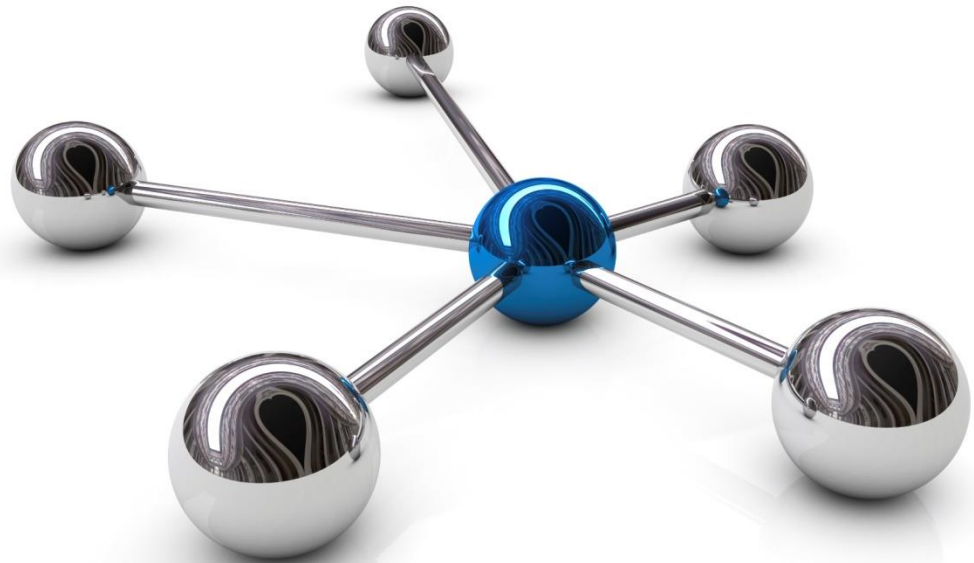
complete the online return



don't forget to process the leaver



i-Connect



the data exchange solution for the public sector