



Southwark

# Life

Summer 2017

## Southwark's hidden treasures

Take a tour of our great borough

## Summer events

What's on in Southwark

## All the news

What you need to know...

**Inside: advice and assistance following the London Bridge attacks**

Your magazine from Southwark Council

*Southwark*  
Council  
southwark.gov.uk



# TURNS OUT I AM A GYM PERSON

**FREE** swim and gym for all Southwark residents

Visit [www.everyoneactive.com/southwarkfreeswimandgym](http://www.everyoneactive.com/southwarkfreeswimandgym) to register.  
Free swim and gym available all day Friday and Saturday/Sunday from 2pm.

## Contents

- 4 Need to know**  
All your Southwark news this summer
- 8 Follow the Herd**  
find out all about Elephant and Castle
- 12 Our creative heart**  
get inspired by Peckham and Nunhead
- 16 Events Calendar**  
find out what's on this summer
- 18 Delightful Dulwich**  
get active in south Southwark
- 22 Northern Exposure**  
bustling Bermondsey and Borough
- 26 Chill in Camberwell**  
the hottest spots to relax
- 29 On the waterfront**  
splash down into Rotherhithe and Canada Water



## welcome...

Diversity is one of the foundations of our borough, and a defining characteristic of every part of Southwark. Our rich history and blend of cultures make us the exciting destination we are today, both as a place to live, and somewhere to visit. The events of Saturday 3 June in London Bridge have shocked and saddened us all, not least because they were an attack on the diversity we celebrate – the mix of nationalities drawn to our borough – and the great pleasure we take in our restaurants, bars and markets.

We will all need time to heal after these horrendous events, but already people are returning to our normal way of life, London Bridge is busy once more and Borough Market has returned to its energetic, bustling, beautiful self.

Southwark is filled with gems like the market, but there are parts of our borough that remain hidden to many residents. Not everyone in the south of the borough is familiar with the peaceful waterways, Norwegian links and emerging nightlife of Canada Water, and equally residents of Bermondsey might never have ventured to Peckham to sip a locally brewed beer in Frank's rooftop bar.

This is our 'hyperlocal' edition of Southwark Life, championing just a small selection of the fantastic cafés, bars, sports facilities and indeed, hyperlocal publications, that make Southwark a very special place indeed. At times of adversity it's worth taking the time to appreciate the embarrassment of riches we have on our doorstep in Southwark. We have so much to celebrate and be proud of.

Peter John  
Leader of Southwark Council



### Contact us

Do you have something to say about Southwark Life? Write to: Your letters, Southwark Life, Fourth Floor North, Southwark Council, 160 Tooley Street London, SE1 2QH or email [southwark.life@southwark.gov.uk](mailto:southwark.life@southwark.gov.uk)

Front page photo kindly supplied by photographer Emma Myrtle. Visit her website at [emmamyrtle.com](http://emmamyrtle.com)

All information correct at time of going to press.

### The Southwark Life team

**Editor** Louise Neilan

**Assistant editors** Catherine Simonds, Kim Hooper

**Contributors** Laura Fitzsimmons, Jane Evans, Aine Gallagher, Chris Page, Alexey Underwood and Natalie Powell

**Photography** Robin Savage, Georgina Jackson, Lisa Jane Photography, Sara Montali, Carlo Draisi

**Design** Whatever Design Ltd

**Print** brokered by Swiss Post

**Printed on 100% recycled paper**

**Distribution** London Letterbox

### Keep in touch

Southwark Life is a quarterly magazine and the next issue is due out in autumn 2017. You can contact the magazine at [southwark.life@southwark.gov.uk](mailto:southwark.life@southwark.gov.uk) but for more regular updates on council news and events, follow us on social media at

[facebook.com/southwarkcouncil](https://www.facebook.com/southwarkcouncil)

[@lb\\_southwark](https://twitter.com/lb_southwark)

[Instagram.com/southwarkcouncil](https://www.instagram.com/southwarkcouncil)



# Need to know...

Summer's here! There's plenty to do and see in the borough but we also have tips on staying healthy, safer cycling, and our libraries Summer Reading Challenge.

For news and events follow us on Facebook and Twitter or find out more at [southwark.gov.uk/enews](http://southwark.gov.uk/enews)

 Follow us on **Facebook** [facebook.com/southwarkcouncil](https://facebook.com/southwarkcouncil)

 Follow us on **Twitter** [@lb\\_southwark](https://twitter.com/lb_southwark)

 Follow us on **Instagram** [Instagram.com/southwarkcouncil](https://Instagram.com/southwarkcouncil)

## Fire safety in tower blocks

The tragedy at Grenfell Tower in West London has shocked us all. For info about all the work Southwark Council has done to improve fire safety in council blocks since 2009 go to [southwarkcouncil.gov.uk/firesafety](http://southwarkcouncil.gov.uk/firesafety)

## Get fit this summer!

There's a large range of free and low cost exercise classes for people over 50 years and disabled residents, encouraging good health and wellbeing. Have a go at senior aerobics, Tai Chi, wheelchair tennis, health walks, yoga and more. Visit [southwark.gov.uk/clubsandactivities](http://southwark.gov.uk/clubsandactivities) for further information.



## Free swim and gym

We're offering all Southwark residents the opportunity to use swimming and gym facilities for free in six of the borough's leisure centres. The offer is available on Fridays and weekends from 2pm. Over 60s can also take part in any Silver sessions free as advertised. To register and for more information, visit [southwark.gov.uk/freeswimandgym](http://southwark.gov.uk/freeswimandgym)



## Are you looking after someone else's child?

Some parents arrange for their children to live with another family. If a child is living with someone other than a parent or close relative for a period of 28 days or more, the law requires you to notify us. Our role is not to disrupt the arrangement, but we have a responsibility to ensure that children are being properly cared for, and make sure you get the help you need. [southwark.gov.uk/privatefostering](http://southwark.gov.uk/privatefostering)

## Cycle with confidence

Whatever your age or ability, we have free cycling training tailored for you. There is individual training for residents aged 18 years and over, or you can make it a day out for the entire family and sign up for our family course. We also have free training for all school children. To register, visit [southwark.gov.uk/cyclewithconfidence](http://southwark.gov.uk/cyclewithconfidence)



## Discounted cycle locks

We're working in partnership with local bike shops to offer quality, affordable locks and advice on securing your bike safely. A top tip when purchasing your bike locks is to always use a quality D lock and additional lock for wheels. For more tips and a list of participating bike shops, visit [southwark.gov.uk/discountedcyclelocks](http://southwark.gov.uk/discountedcyclelocks)

## Universal Credit – are you ready?

Universal Credit (UC) is being rolled out across the UK. If you claim certain benefits including housing benefit, income support, working and child tax credits, these will all fall under UC and will be paid to you as a monthly payment in arrears. Prepare yourself for the change. Visit the government's website: [gov.uk/universal-credit](http://gov.uk/universal-credit) for more information.

## MySouthwark Homeowners Board

To improve services with our homeowners we have recruited an independent board. Barbara Walsh, independent chair of the board said: "I am delighted to be taking on the role as part of this innovative venture. We will focus on finding ways to improve how we deliver communications between homeowners and the council." For information visit [southwark.gov.uk/homeowneragencylaunch](http://southwark.gov.uk/homeowneragencylaunch)

## Central Venture Park Fun Day

Come along to the Central Venture Park Fun Day, Bamber Road on Saturday 1 July at 12pm to 3pm for lots of activities for all the family. A new park entrance feature will be unveiled, created by a local artist Jo Brinton and pupils from Oliver Goldsmith and St James the Great primary schools. The students took part in workshops where they worked on the design with the artist as well as local residents.

## Our children's services receive a 'good' Ofsted report

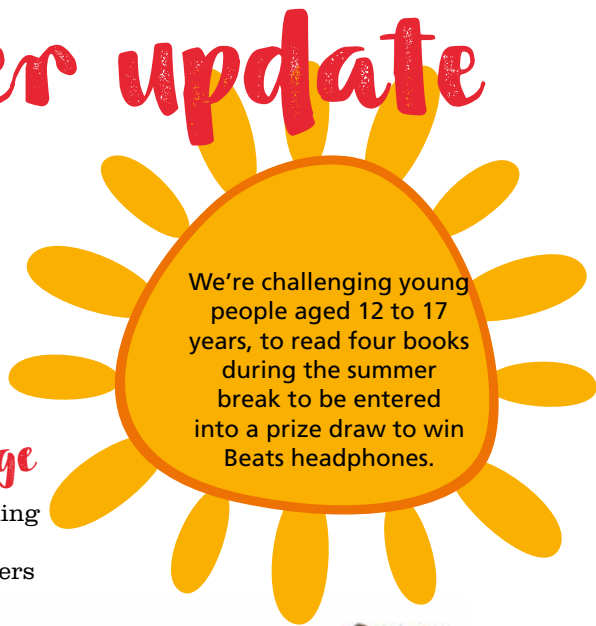
We are ranked in the top 28% of the 146 local authorities inspected so far. Ofsted were particularly impressed with our adoption services, found to be outstanding, with well trained social workers credited for supporting and preparing children for adoption, while prospective adopters are said to benefit from rigorous assessment, high quality training and post adoption support. [southwark.gov.uk/ofstedreport](http://southwark.gov.uk/ofstedreport)





# Libraries summer update

We have lots of activities for children and young people at Southwark libraries this summer. Here are just some of the activities to look forward to:



We're challenging young people aged 12 to 17 years, to read four books during the summer break to be entered into a prize draw to win Beats headphones.



## Summer Reading Challenge

Children will be able to join in the fun by reading six books and solving cases and puzzles with our Animal Agents detectives, collecting stickers along the way, some with mysterious smells. Visit [southwark.gov.uk/readingchallenge](http://southwark.gov.uk/readingchallenge) for more information.



Illustrations © Tony Ross, 2017

## Tell us which books to buy!

We're inviting young people aged from 8 to 17 to visit Foyles, one of London's largest bookshops, on Thursday 27 July from 9.30am to 3pm, to help select which books to purchase for Southwark libraries. Those who come along on the visit will be signed up as a young volunteer for Southwark libraries and also receive a free book. Registration is required, email [southwark.libraries@southwark.gov.uk](mailto:southwark.libraries@southwark.gov.uk) by Monday 24 July.

## Graphic art competition

Our graphic art competition is aimed at young people aged from 7 to 17 to showcase their drawing skills with the opportunity of winning a prize. Drawings can be of favourite Manga, cartoon, comic or graphic novel characters or made up characters. You could win an Amazon £20 voucher and graphic art books. Send entries to [southwark.libraries@southwark.gov.uk](mailto:southwark.libraries@southwark.gov.uk) or submit to Canada Water library or Dulwich library by 3 September 2017.

## Walworth Garden celebrates 30 years

Thirty years after a derelict piece of land in Walworth was turned into a community garden by local residents, Walworth Garden is celebrating with free events over the weekend of 29 and 30 of July. Get involved in the family fun on Saturday from 1pm with an art workshop, treasure hunt and a chance to sample produce grown in the garden and learn about bees. Sunday afternoon is a health and well being day with yoga, hand massages and more. [walworthgarden.org.uk](http://walworthgarden.org.uk)

## Camberwell Art Trail

A series of artworks is being installed to form a route through the heart of Camberwell. Artist, Leoni Bullock has worked with the local community and artists to design street markers that will guide the public around Camberwell. It will encourage people to take the time to absorb architecture, nature, history and stories of the places they pass through every day. [camberwellarttrail.co.uk](http://camberwellarttrail.co.uk)



# Support, information and advice

## Get support, information and advice if you've been affected by the events in London Bridge and Borough Market

Many people can be affected by traumatic events; and supporting survivors of, and people bereaved through terrorism, is vital. It can be in the days, weeks or even months afterwards the emotional impact of witnessing or being affected by a terrorist incident can be felt. Kevin Fenton, director of health and wellbeing at Southwark Council says:

"Remember to take care of yourself and take time to appreciate the good in the world. Make connections with people around you – talk to them and offer your support. We all need to make space and time to connect, talk and listen."

If you've been affected by the recent terrorist attacks in London Bridge and Borough Market there are a number of support services that can help you:

- Victim Support offers emotional and practical support. Call freephone 24/7 on **0808 168 9111** or visit [www.victimsupport.org.uk](http://www.victimsupport.org.uk)
- Victims' Information Service helps victims of crime to get information on local support available. Call freephone on **0808 168 9293** or visit [www.victimsinformation.service.org.uk](http://www.victimsinformation.service.org.uk)
- The NHS can help people deal with the effects of distressing events. Visit your GP or [www.nhs.uk](http://www.nhs.uk) for advice.
- To support children and young people you can call the NSPCC helpline on **0808 800 5000** or visit [www.nspcc.org.uk](http://www.nspcc.org.uk)

For more information about support services available visit [www.southwark.gov.uk/community-safety/london-bridge-incident-support](http://www.southwark.gov.uk/community-safety/london-bridge-incident-support) or [www.gov.uk/guidance/london-bridge-and-borough-market-attacks-june-2017-support-for-people-affected](http://www.gov.uk/guidance/london-bridge-and-borough-market-attacks-june-2017-support-for-people-affected)

# Follow the herd... to Elephant

Once known as the Piccadilly of the South, Elephant & Castle is famous more recently for a pink elephant and an old roundabout. But with its rich history and a new wave of hot new venues for those with their finger on the pulse, Elephant is the place to be seen this summer.

## Just a spoonful of sugar....

Named after an historic coaching inn and pub, Elephant and Castle has long been one of the UK's most iconic transport checkpoints. Look past the cheerily clamouring traffic, which has thundered by for centuries, and you'll find one of Southwark's most vibrant and multicultural areas – a natural result of being a key economic hub and resting spot for merchants from across the globe.

It's an area that has transformed greatly over the years – and G.Baldwin & Co Apothecary at 173 Walworth Road, trading since 1844, has witnessed many of the changes. It's a colourful, cosy oasis of oldworldliness that stands out against today's dreary rat race of smartphone culture, food additives and automated checkouts. The store has always stayed true to its roots – it's London's oldest herbalist, with shelves lined with glass vials and kaleidoscopic curiosities. Its key to survival has been constantly adapting to the public's needs – these days, alongside its natural medicines and remedies, it stocks health foods and organic products, and even soapmaking kits. Baldwin's regulars include Michael Caine and Terence Stamp, so you'll be in good company.



## Foodie Elephant

After something a little more contemporary? The modern and colourful Artworks Elephant sits at the opposite end of the spectrum. Made up of repurposed shipping containers, it houses rentable studio space and a varied pop-up mall. This is one of Elephant's most exciting places for a quick meal or drink, with its diverse cluster of international food stalls on the ground floor. The floors above are where the small start-up businesses reside, alongside the Newington Temporary Library

which offers a full range of library services and classes.

It's arguably its deeply international atmosphere that makes Elephant and Castle so special, and another shining example of this is Newington Causeway's Mercato Metropolitano, a community market space built on values of craftsmanship, sustainability and urban renewal. Made from a repurposed factory yard, it houses a boxing gym, urban garden, exhibition area, in-house cinema, affordable workspace,



**Artworks**



and more. And for when you're exhausted from all the creative activities, or indeed boxing, you're in for a treat – the Mercato's key attraction is its international food market, a top destination for discerning food lovers all over the capital. The dishes here are predominantly Italian – artisan, authentic and rich in aromatic Mediterranean flavour – but other cultures such as Vietnamese are represented, too.

And if you want a taste of authentic Latin American or Chinese cuisine, check out local legends La Bodeguita or Dragon Castle in central Elephant.

**Green Elephant**

If you've realised after lunch that your eyes were bigger than your stomach – an easy mistake to make when faced with the Mercato's stunning food – consider taking a stroll through one of Elephant Park's new green areas. The new residential development includes multiple leafy courtyards and gardens that are set to open to the public this summer and make sure you pay a visit to Crossway Church's brand new home with its daring and ambitious design. Other exciting new developments include the refreshed St Mary's Churchyard, a popular small park that was once a large churchyard. Located next to the new Castle Leisure Centre, it consists of a central green area,

a children's playground and – best of all – a stunning new ornamental pond with a fountain and a paved plaza with water jets. It's a beautiful spot to visit, either on your own or with friends and family.

If you're feeling energetic, the leisure centre's activities are kicking into a higher gear for the summer – here you'll find exercise classes, a state of the art gym, spa, swimming pools and much more.

**Mercato Metropolitan**



There's a crèche for the young ones and a café too for those who would rather just unwind. As Southwark residents can register to use the gym and swimming pool for free on Fridays and weekend afternoons, there is no excuse not to visit.

**Crossway Church**



## Doing the Walworth walk...

Stretching southward from here and towards the huge and gorgeous Burgess Park is Walworth Road, which reaches into the borough's very heartland.

It's along this iconic street that you'll find another market – East Street Market - affectionately called 'The Lane' or 'East Lane'. Alongside multiculturalism, markets are a key part of Southwark's identity. East Street Market itself has existed, in its various forms, since the 17th century and it brings together not only Walworth Road and Old Kent Road, but Southwark's international communities too. The population of Southwark is one of the UK's most diverse, and The Lane reflects that – of more than 120 languages spoken in the borough, it's a safe bet that most can be encountered on an afternoon spent here.

Unlike the trading spaces above, this market is more traditional – clothes, household items, fresh food and more are available in abundance, and in a startling choice – especially African and Caribbean foods. The market operates every day except Monday, and Saturday is easily its busiest.

If you're not in the mood to knock up a feast from your shopping bag, then stop off next door at

### St Mary's Churchyard



Louie Louie, Walworth Road's new fine dining establishment, whose delicious menu was recently described by food critic Jay Rayner in the Guardian as "joyous cooking".

Or chill out after a summery Saturday exploring Southwark and its markets with a delicious, cold beer at one of Orbit Beers' open days during the warmer months. Like many of the borough's most exciting businesses, Orbit Beers is tucked away in one of many railway arches – in this case on Fielding Street, a short walk from East Street Market.

Opened in 2014, the brewery combines its founder Mario Canestrelli's love for music with his love for beer – its beers' names are subtle musical references, while the unfiltered, warm sound of vinyl music is named as a key inspiration for their natural, homely flavours.

In fact, the brewery's official recommendation is that its beers are enjoyed with music. It's such a key part of the Orbit experience that the brewery runs unique 'Bring Your Own Vinyl' events around London, with beer lovers invited to bring along their favourite records to be played as part of the afternoons' soundtracks.

With summer in full swing, Orbit now opens its doors to the public every Saturday, between 12pm and 8pm. Their freshest brews are available for beer lovers to enjoy with conversation, music, board games and (hopefully) sunshine – and occasionally the brewers bring in food, stay open late and have more of a party!

### Orbit Beers





## SE1

If something's happening, and no-one else can tell you, who are you going to tweet? Well if you live in SE1, the answer has to be James Hatts.

James and his Dad set up the SE1 website in 1998, just as the northern part of Southwark was undergoing huge change. They helped take local people on that journey, held local services to account and became famous for always being one step ahead of the media pack. In the recent London Bridge attacks, James played a crucial role in finding out the latest information and sharing it with local people. James, we think you probably need some sleep, but we salute you.

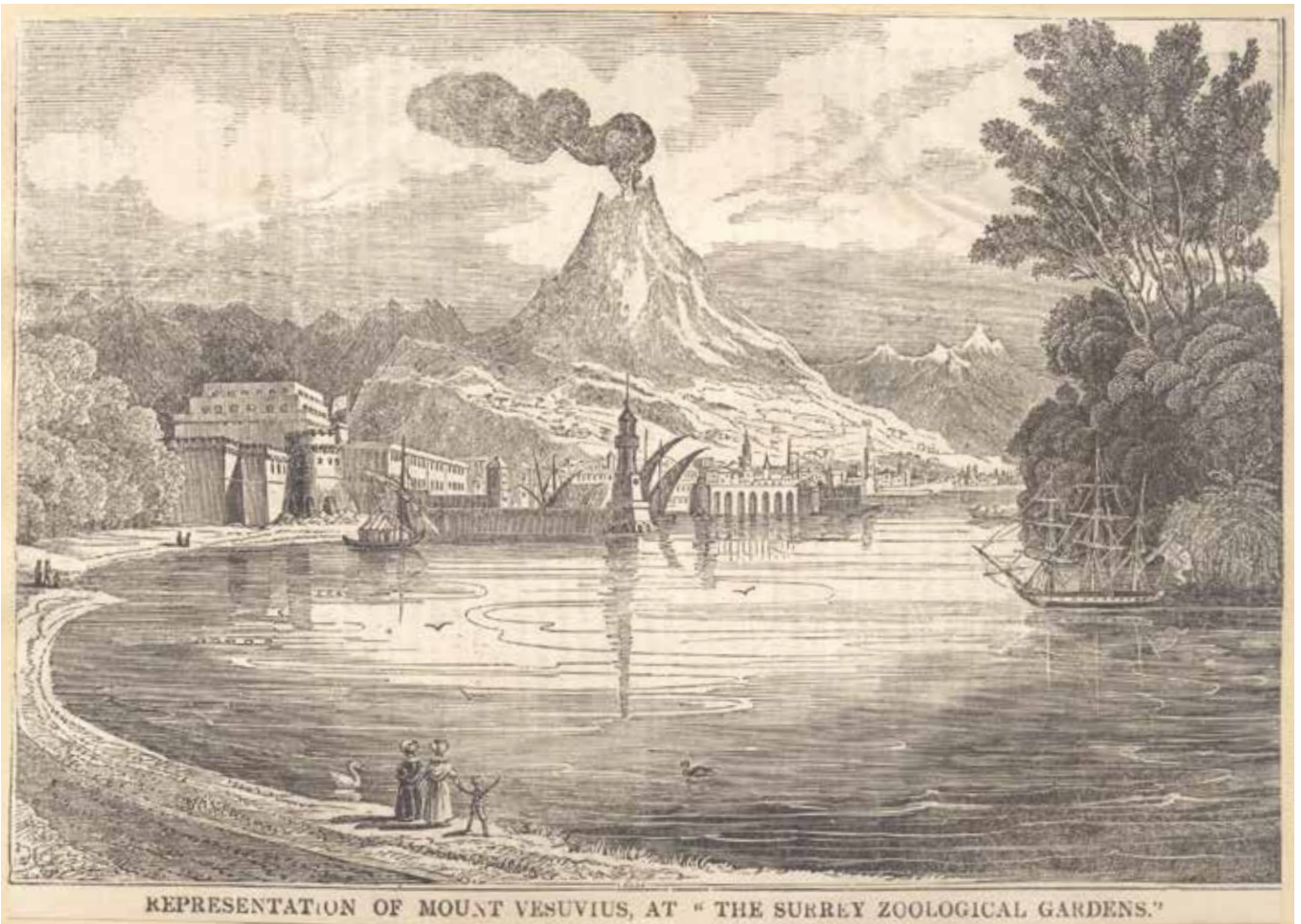
[www.london-se1.co.uk](http://www.london-se1.co.uk) [@se1](https://twitter.com/se1)

## Never forget the Elephant's glorious past

If you're reading Southwark Life online, you have two Walworth natives to thank, both born in 1791: Charles Babbage and Michael Faraday. Charles Babbage was born in Crosby Row, Walworth Road; his blue plaque, on the corner of Larcom Street, is near his birthplace. Babbage refined his design for an "analytical engine" that could run programs written on punchcards – it contained all the essential elements of a modern computer.

Michael Faraday was born a short distance away, in Newington Butts. One of the foremost experimentalists of the Victorian period, Faraday made strides in chemistry and physics; his work on electricity and magnetism are the basis of modern theories of electromagnetism – and the equipment, like computers, that rely on them. The metal cube at the centre of the Elephant & Castle – the Faraday Memorial – is an especially fitting one. The metal shell blocks electromagnetic fields from getting inside: this is known as a Faraday cage.

Lorrimore Gardens off the Walworth Road was one of the best places in London for a Victorian child. From 1831 to 1872, the site housed the Royal Surrey Zoological Gardens, which rivalled the zoo in Regents' Park that opened in 1828. The Zoo had lions, tigers, a pair of camels donated by the ruler of Egypt, elephants, and the first giraffes on public display in this country – they were brought from their ship to the zoo in the middle of the night so as not to scare people. The Gardens also hosted concerts, fireworks shows, and panoramic displays like the eruption of Mount Vesuvius or historic naval battles.



# Peckham & Nunhead

Artistic, up and coming, bustling, multicultural, cool or just home – Peckham is many things to many people. Its journey from gritty London suburb to the place to go for youngsters from all over London has been well documented, but what makes it special is that it hasn't lost its edge, and old and new rub along together well.

Take the Bussey Building on Rye Lane – home to art galleries, yoga, a record store, but also churches and a mosque. Just across the road, brand new cafés and restaurants are springing up between well-established grocery stores and hairdressers. Heading south, busy Rye Lane opens out onto acres of green space, gardens and football pitches on Peckham Rye. So what makes Peckham so special? Here we pick out some of the highlights for the uninitiated, but there is so much more to discover – this summer why not head to SE15 and start exploring?

## Springboard to success

From the streets of Peckham to the boards of the Old Vic, via the Star Wars planet of Jakku, John Boyega is one of Peckham's most famous sons. But he's in good company with Rio Ferdinand, who grew up on the Friary Estate, honing his footballing skills in local parks. So what is it about Peckham that propels some of its residents to stardom and success? One thing that will certainly help future generations is the new Mountview Academy of Theatre Arts that is moving to a new site behind Peckham Library. Local MP Harriet Harman recently launched the building works, and the new centre is due to open in 2018 with lots of opportunities for local people to get involved.



**New playground and facilities on Peckham Rye**



## SCHOOL NEWS

As Peckham and Nunhead grow, so does demand for school places, and the council has been working with popular local schools to expand or replace their buildings. Ivydale has expanded onto a new site and Bellenden Primary will be moving to a brand new building on Dewar Street next year, with places available.

## ADVENTURES ON THE RYE

Stroll across Peckham Rye on any day of the year and you will see local people out walking their dogs, exercising, playing football, having



a family picnic or just chilling with friends. The council is now investing in facilities on the Rye to bring a top quality playground and changing facilities to the park. The car park next to the café has been moved to provide space for a large, high-quality playground, and a modern playroom and new football changing rooms will also be completed over the summer.

### FILL YOUR BOOTS

One of Peckham’s biggest draws is its hugely popular food and drink scene. Any visitor is spoiled for choice whether they fancy steamed Vietnamese buns at Mr Bao, cosy and delicious Spanish nibbles in Miss Tapas on Choumert Road, a strong coffee and sandwich on Bellenden Road’s Anderson and Co, pushing the boat out at Pedler with its seasonal ingredients and gin cocktails, or a South Indian feast at Peckham favourite Ganapati on Holly Grove. If you’re after a nice spot for a few drinks in the sunshine, you can’t go wrong with the famous Frank’s Campari bar on top of the multistorey car park, but also don’t miss The White Horse with its new covered terrace, perfect for sheltering from a summer shower, or the ridiculously cool Nines bar in Copeland Park just opposite Peckham Rye station.



Nines bar

### COMMUNITY SPIRIT

Some of the most interesting plans for Peckham have started life as a crazy thought in the mind of a local. Both the Peckham Coalline and the Peckham Lido are projects being developed by local people to recapture some of Peckham’s brilliant past while enhancing its reputation as one of London’s best destinations. Find out more about these exciting crowdfunding projects at [peckhamcoalline.strikingly.com](http://peckhamcoalline.strikingly.com) and [peckhamlido.com](http://peckhamlido.com)



Laura El-Tantawy at Peckham 24

### ARTS

A great time to visit Peckham is during one of its many festivals featuring up and coming artists. Last month Peckham 24, a 24 hour celebration of contemporary photography came to SE15 during Photo London week, and from 14-17 September the town will be heaving with events, open studios and stalls as part of the annual Peckham Festival. Find out more at [peckhamfestival.org](http://peckhamfestival.org)



## PECKHAM PECULIAR

South-east London locals Kate White and Mark McGinlay were ‘in the right place at the right time’ when they launched the hyperlocal newspaper Peckham Peculiar in 2013, with community backing. A journalist and PR professional by trade, the couple run the free paper supported by a host of local contributors. The first edition cost £2,500 to create, print and distribute, and was fully funded by 150 supporters of the idea from Peckham to Spain and America – an early use of crowd-funding. Mark remembers “people blindly believed in the project. Some were a bit worried we were hipsters, but we proved them wrong. We care about people, past and present.” The paper, which comes out six times a year, has certainly proved popular locally, available in local cafés and pubs, to the point the couple have recently launched the Dulwich Diverter sister paper. So why has it been so successful? “I feel like people are proud of this area with its different people and backgrounds, and love living here. We highlight hidden gems locally and are a mouthpiece for the area. Peckham is exciting, full of people doing brilliant things. We think people should know about it.” Read the current edition at [peckhampeculiar.tumblr.com](http://peckhampeculiar.tumblr.com)

# Nunhead – Southwark’s best-kept secret?

Nunhead has always been a lovely, leafy area, with its magnificent Victorian cemetery and unique village feel. In recent years, community-driven projects supported by the council have helped make sure that the local high street is thriving and the family-friendly area is becoming a destination in its own right.

## THE HABIT

The Habit is a popular local bistro that opened in February 2016. It’s a friendly local spot, designed for local people to come and relax with friends and family, or have a coffee and get on with some work.

Daniel Benjamins, 32, is from Nunhead, and is part-owner of The Habit. He said: “I was born and bred in Peckham so I know the area well. There’s a nice mix of people who have lived here a long time and new families who’ve moved in.

“The Habit is a neighbourhood bistro. It’s a meeting place for mums to come with their babies, couples and families to come and have dinner here too, and we do a great Sunday roast for everyone. People enjoy what we do.” [thehabitnunhead.co.uk](http://thehabitnunhead.co.uk)



## THE IVY HOUSE

The Ivy House is a community run pub and the first venue nationally to be protected, after local people rallied with the council to nominate it as a listed community asset. Its 371 owners opened the doors four years ago, offering a broad range of ales and events, with something for everyone.

Tom Victorio-Jones, 25, has lived in the Nunhead area for seven years. He’s the events manager at The Ivy House, Tom said: “We are open to everything all the time; we have kids coming and people over 70.

“We have so many different events: yoga, music, kid’s classes, beer festivals. The Ivy House is a place where people bring their friends, families, kids and dogs it’s a real asset to the community.” [ivyhousenunhead.com](http://ivyhousenunhead.com)



“Being Nunhead residents we knew the high street pretty well, and thought its friendly village-like atmosphere would be a perfect fit for The Beer Shop.”

## THE BEER SHOP

Lee Gentry and Lauren Willis own the Beer Shop, they've lived in Nunhead for five years, and Peckham before that. The Beer Shop opened in December 2014, when vacant shop fronts dominated the high street. They are pleased that there are now enough places to eat and drink, for locals to have a night out in Nunhead.

Lauren said: “Being Nunhead residents we knew the high street pretty well, and thought its friendly village-like atmosphere would be a perfect fit for The Beer Shop.

“The feedback from locals has been amazing, we have a really great group of regulars who we've got to know really well over the last few years. We know many people who have met here by chance and become friends - it's a bit like 'Cheers' sometimes, but that's what we love about it!”

**[thebeershoplondon.co.uk](http://thebeershoplondon.co.uk)**



## THE GREEN

The Green came about after a campaign staged by local people resulted in a resoundingly successful public architecture project, funded by the council and resulting in a practical but striking community centre.

Ian Richie has lived in Nunhead for approximately 30 years,

he is retired and a manager at The Green, he said: “The local community were very much involved at the design and planning stage, this resulted in a state of the art facility opening in January 2016. The Green took off immediately and has been busy ever since.

“It's a centre of excellence and a very friendly place. We hire it

out for lots of different purposes and we find that it attracts local people who work with others from our community. Young people's activities are very popular and older people can meet for bingo or simply a chat. Everybody who visits for the first time loves the centre; it's a really positive place.”

The Green was recently a regional award winner at the RIBA architecture awards with the judges calling it a “playful and ebullient piece of architecture”.

Cllr Barrie Hargrove, cabinet member for communities and safety, said: “I am delighted that this project has come together so well, all thanks to the local people who worked together to ensure it is exactly what they needed and wanted. The design is stunning and I am not surprised it has won this prestigious award. I hope that the space will serve the community who live in Nunhead and nearby for many years to come.”

**[thegreennunhead.org](http://thegreennunhead.org)**

# Events calendar

## The World of Anna Sui

The World of Anna Sui features over 100 looks from the designer's archive, presenting a roll call of archetypes from Surfers and School Girls to Hippies, Mods and Punks

**Now to 1 October 2017**

**Open Tuesdays to Saturdays, 11am–6pm. Thursdays until 8pm. Sundays, 11am–5pm. Last admission is 45 minutes before closing. Closed Mondays**

£9.90 adults\* / £7.70 concessions\* / £6 students \* Includes 10% gift aid. Children under 12 are free.

The Fashion and Textile Museum. 83 Bermondsey Street, London, SE1 3XF

[ftmlondon.org/ftm-exhibitions/the-world-of-anna-sui](http://ftmlondon.org/ftm-exhibitions/the-world-of-anna-sui)



## Alberto Giacometti

The Tate Modern presents the UK's first major retrospective of Alberto Giacometti for 20 years

**Now to 10 Sep 17**

**Sunday to Thursday 10am–6pm  
Friday to Saturday 10am–10pm**

£18.50

Tate Modern, Bankside, London SE1 9TG

[tate.org.uk/whats-on/tate-modern/exhibition/alberto-giacometti](http://tate.org.uk/whats-on/tate-modern/exhibition/alberto-giacometti)

Alberto Giacometti Man Pointing 1947 Tate © Alberto Giacometti Estate, ACS/DACS, 2017)



## BERMONDSEY CARNIVAL

Some of the biggest names in the UK reggae and ska scene will be taking to the stage in Southwark Park this summer for this year's FREE Bermondsey Carnival.

Saturday 1 July

12pm to 8pm

FREE

Southwark Park

[www.southwark.gov.uk/bermondseycarnival](http://www.southwark.gov.uk/bermondseycarnival)



## Shakespeare's Telling Tales

Shakespeare's most famous tales brought to life by Globe Education storytellers, with interactive workshops creating a lively way for all the family to learn more about Shakespeare.

**28 to 30 July 2017**

**Monday – Saturday 7.30pm  
Tuesday and Saturday Matinee 3pm**

Prices vary – see website for details  
Shakespeare's Globe

[www.shakespearesglobe.com](http://www.shakespearesglobe.com)



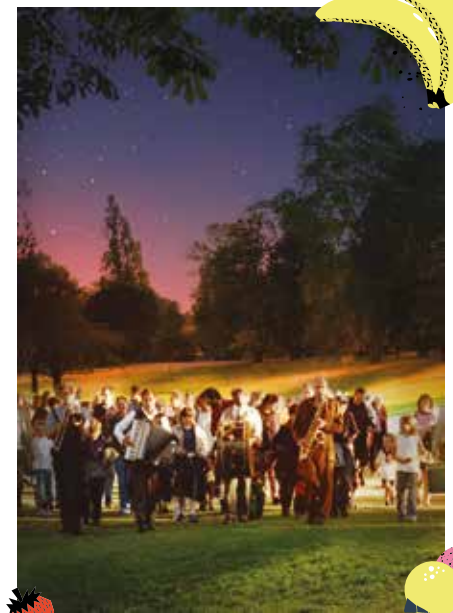
## Tales from the Arabian Nights

Reimagining some of the stories from A Thousand and One Nights into a wonderful, adventurous family friendly promenade performance.

**2 to 5 August 2017, 7.30pm,  
6 August, 5pm**

Tickets from £10 available  
Southwark Park

[londonbubble.org.uk](http://londonbubble.org.uk)





# Summer 2017

## Double Double Act

Are children and adults the same? With slapstick humour and lots of green slime this clever performance allows us to see the world through the others' eyes. Suitable for ages 6 to 12.

**20 June to 9 July**  
**Performances at 11am and 1.30pm**

*Tickets vary, see website for details*  
 Unicorn Theatre  
[unicorntheatre.com](http://unicorntheatre.com)



## Mint Street Festival

The line-up for this year's festival includes Nkomba, Norrell & the Dub Factory and Jaelee Small plus dance displays from the internationally acclaimed Los Romberos Latin American dance group.

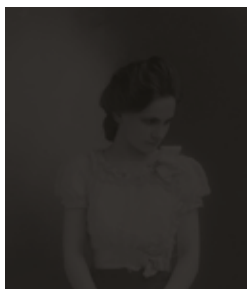
**Saturday 15 July**  
**11am to 7.30pm**

*Free*  
 Mint Street Park, SE1 0EY  
[mintstreetmusicfestival.info](http://mintstreetmusicfestival.info)



## Project Space: Ryan L. Moule, Vessels and Vestiges

Vessels and Vestiges is an exhibition of chemically unfixed photographic prints by Swansea-based artist, Ryan L. Moule.



Ryan Moule, 2017

**Now – 26 August 2017**  
**Monday to Friday, 10am-5pm;**  
**Saturday and Sunday, 10am-3pm**

*Free*  
 Jerwood Visual Arts, Jerwood Space,  
 171 Union Street SE1 0LN  
[jerwoodvisualarts.org](http://jerwoodvisualarts.org)

## WORLD FOOD FESTIVAL

The World Food Festival is a celebration of food from around the globe right in the heart of Elephant and Castle. We're inviting chefs from across the UK to make this the ultimate tasting event!

**23 – 24 September**  
**12pm onwards**  
*Free*

The Artworks  
 Elephant  
[www.theartworks.london](http://www.theartworks.london)



## Summer holiday activities

Welcome summer with a two-day kids activities session with the centre's own Festival area, complete with Leis, giveaways, glitter tattoos, face painting, a photobooth and carnival dancers.

**11 and 12 August**  
**Monday to Friday, 10am-5pm;**  
**Saturday and Sunday, 10am-3pm**

*Free*  
 Elephant and Castle Shopping Centre



# Delightful Dulwich

Dulwich and East Dulwich are synonymous with trendy places to eat and drink, and green spaces to enjoy. But beyond the obvious buzzing bars and park space, there's plenty more to see and do from art to active sports.

**W**here in central London can you go horse-riding, ride a go-kart, play cricket, golf or football, belong to a running club or ramble in the woods, all within a mile of each other? Dulwich is the answer.

Dulwich Riding School provides riding lessons for beginners of all

ages from six years old, while just opposite, Dulwich Park Runners, who set off from their clubhouse at the Trevor Bailey Sports Club, on the South Circular, on Tuesday and Thursday evenings, will go a long way to getting you fit for the summer season. Or join Dulwich Runners Athletic Club for their midsummer relays around the park track on 12th July.



## Dulwich

### Leisure Centre

Dulwich Leisure Centre reopened in 2012 after a substantial renovation project. The centre, run by Everyone Active for Southwark Council, has a pool, studios and treatment rooms with a crèche for parents who want to use the facilities. Classes for all abilities are available throughout the week.

[everyoneactive.com/centre/dulwich-leisure-centre](http://everyoneactive.com/centre/dulwich-leisure-centre)

### Herne Hill Velodrome



### Herne Hill Velodrome

On the outskirts of the Dulwich postcode is the Herne Hill Velodrome. Built in 1891, this iconic, outdoor 450 metre cycle track was a 1948 Olympic cycling venue. It now runs regular events including children's balance bike sessions and racing trials for teenagers. The popular Wheels for Wellbeing is a cycling session for disabled people or people who have mobility or balance problems, lack road safety awareness or find cycling on the road difficult. People of all abilities, ages and fitness levels are welcome.



## Dulwich Cricket Club



## Anyone for cricket?

Nearby is Dulwich Cricket Club, which is a ClubMark accredited cricket club, offering competitive cricket for boys and girls from five to 15 years old. Coaching is run by a group of qualified coaches at its home ground in Burbage Road with additional facilities in Dulwich. Last season the club had over 500 junior members, including more than 50 girls (with a separate Girls Only training session for girls in year three and above).

Also nearby is Streatham and Marlborough Cricket Club in Dulwich Common, which runs all-day summer camps throughout the summer holidays. The Southwark Club was chosen, over thousands of others nationwide, to be the showcase for the 2017 NatWest Cricketforce. England stars Steven Finn, Zafar Ansari and Amar Viridi, former England captain Mike Gatting, ECB, recently attended and took part in renovating and improving the ground and its facilities. It is hoped that the momentum of CricketForce will help the club raise enough funds to start work on a new pavilion.

## Dulwich Hamlet football club

Why not support a truly local football team? Dulwich Hamlet football club, a family-friendly club, based on Dog Kennel Hill welcomes new supporters. The club is currently looking into getting a new ground very nearby.





## Dulwich Woods



## Parks and art

If you go down to the woods today, you're sure of a big surprise...which is how far away you can feel from the hustle and bustle of daily life in Southwark. Both Dulwich Woods and the adjacent Sydenham Hill woods provide great places to stretch your legs under the leaves, and provide a fun and safe place for children to run about. In Dulwich Park, the marked mile-long path is perfect for horse-riding on the designated track or having a go on the recumbent bikes, which are available to hire.

The pathway around the park is also suitable for wheelchairs and is close by to the fully accessible Dulwich Picture Gallery, which has a permanent collection of over 600 works, including masterpieces by Rembrandt and Canaletto as well as regular touring exhibitions. The gallery has a new, temporary pavilion, a venture with London Festival of Architecture. London-based practice IF\_DO designed the temporary events structure in the gallery's historic grounds. The pavilion will host a vibrant programme of public events celebrating the Gallery's bicentenary year and opened to the public at the beginning of the London Festival of Architecture on 1 June 2017.

## Interesting architecture

If you're a fan of Brutalist and twentieth century architecture, why not take a walk over to see the view from Dawson's Heights. Built by Southwark Council in 1964-72, the striking design takes advantage of its hill-top location by following the contours of the landscape. Kate Macintosh, the lead architect, was 26 when she began to draw up the designs for Dawson's Heights(1964-72). She had been working in Denys Lasdun's National Theatre team, and joined the London Borough of Southwark's architecture department in search of more on-site experience. In a ballot in 1998, residents voted for Southern Housing Group to take over management of the estate, which it does to this day.



## Hidden Homes

Did you know Kingswood Estate was one of the first Southwark addresses to have hidden homes built on site? The Hidden Homes Strategy identifies old rent offices, laundries, drying rooms, loft spaces and even garages on council estates that can be converted into homes to increase the housing stock in the borough.

## Kingswood House



## Kingswood House

Kingswood House, a Grade 2 listed mansion set in the surrounding housing estate, regularly organises events for the strong local community including knitting groups, over 50s group and arts and crafts for children. It also takes part in the annual Open House Weekend and Link Age (formally Dulwich helpline) also runs events from the House. Read more about its history further on.



## East Dulwich forum

The East Dulwich forum: If it's not on the forum, it didn't happen. The East Dulwich forum, or EDF, is one of the largest online social forums in London with 75,000 members over the past ten years, 45,000 of whom have posted messages, and around 4-600 posts each day being approved – you can trade anything from circus skills to baby accessories, find out what the local schools are like or talk politics. Mark Collins, founder of the forum, says: "I set the forum up in September 2006, initially to get answers to the kind of questions you'd ask a neighbour over the fence – like where to get your car serviced or go for a decent Sunday lunch. I have a small team of moderators but I work as well as managing the forum and with 10,000 people a day using the site, it's a big 'hobby'. It was the local community who initially helped me get the funding for the forum, with donations of over £2,000 in 24 hours. In return, the EDF has always 100% backed local businesses, for free. It's mostly self policing and 99% of people are really nice, with an occasional vitriolic bad egg having to have their comments deleted. Most people are interested in how they can shop locally and the community spirit has had some great successes – from a local Women's Institute being resurrected in the area as a result of a discussion and at least three marriages of people who have met on the forum. I like that part the best – the EDF is supposed to be fun and useful and people have found more than answers to questions – they've found friends for life through shared interests."



**Remi Rough**



## Kingswood House and the birth of Bovril

Kings Wood, formerly known as Kings Coppice, may have taken its name from Edward King who was a tenant of Dulwich manor as far back as 1535. Between 1811 and 1814 William Vizard, Queen Caroline's solicitor, built Kingswood Lodge, which was later re-named Kingswood House. In 1882, a John Lawson Johnston acquired Kingswood and set about transforming the house, adding the entrance, battlements and the north wing. The Castle Ruin, which stood near the shops, was probably his inspiration. Johnston's great triumph was the invention and marketing of the beef extract called Bovril from which he gained his considerable fortune. Kingswood became widely known locally as Bovril Castle and its owner acquired the nickname Mr Bovril.

## Street art

If street art is more your thing, follow the outdoor gallery trail all around Dulwich with established street artists such as Remi Rough, System and Conor Harrington contributing to brighten up the walls and make statements around Dulwich and East Dulwich.



*Something different*

And for something COMPLETELY different: check out artist and local legend Stephen Wright's house on Melbourne Grove. The artist behind the mosaics at The Blue Mountain café on North Cross Road opens his doors to a riot of colour and clutter inside his home:

[stephenwrightartist.com/houseofdreams.php](http://stephenwrightartist.com/houseofdreams.php)

## Find out more here:

### Running

[Dulwichrunners.org.uk](http://Dulwichrunners.org.uk) or [ros.tabor@gmail.com](mailto:ros.tabor@gmail.com)

### Street art

[inspiringcity.com/2013/05/18/the-outdoor-street-art-gallery-of-dulwich](http://inspiringcity.com/2013/05/18/the-outdoor-street-art-gallery-of-dulwich)

### Activities at Kingswood

[kingswoodcommunity.org.uk/activities\\_regular.html](http://kingswoodcommunity.org.uk/activities_regular.html)

### Cricket

[streathammarlboroughcc.co.uk](http://streathammarlboroughcc.co.uk)

# Northern Exposure

Bermondsey and Borough have become some of the hottest places to go for great food, great music and a real community spirit.

## · FLAT IRON SQUARE ·

“Until five years ago Southwark hadn’t changed for decades. Things like the Tate Modern coming in have been huge game changers, particularly for this area.”

That is the view of Benj Scrimgeour, the man behind one of Borough’s most popular new food and drink spots – Flat Iron Square. Benj started his association with the area back in 1987, growing mushrooms to sell on Borough Market out of the railway arches where Flat Iron Square now operates. Opened in October last year, Flat Iron Square is a collective of fantastic street food and drink businesses with a distinctly relaxed vibe inspired by the markets of Barcelona, where Benj spent several years. With seven kitchen units, and three restaurants and outdoor food vans, all occupied by talented new chefs, Benj’s aim is to give good, young chefs the chance to own their own business without the massive start up costs and liabilities of a full restaurant.

“It’s a community,” Benj explains. “A very lovely bunch of people all trying to make it a really nice place to be where people want to come with their families, mates, children. We’re not trying to force it, it is growing organically.”

Based in arches refurbished by Network Rail on the corner of Union Street and Southwark Bridge



Baz and Fred pizzas at Flat Iron Square



Road, the site also incorporates the Grade II listed Devonshire House, which is being done up as a wine bar and room for private events, and hot new music venue Omeara run by Ben Lovett from the band Mumford and Sons.

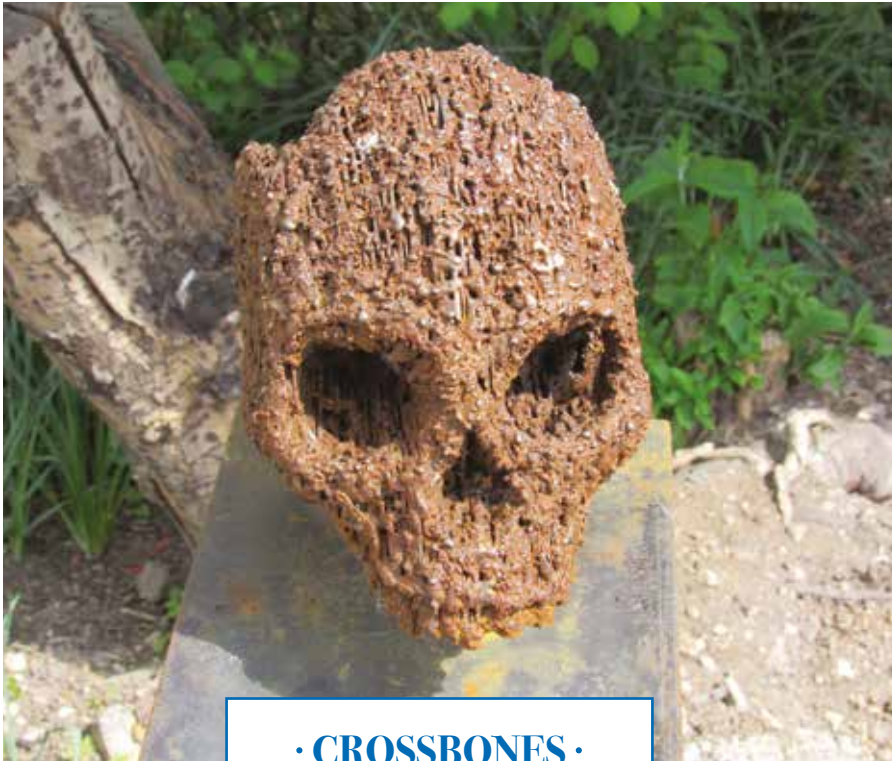
“I wanted a live music venue,” Benj explained, “but I didn’t feel I wanted to do it myself. I don’t

know enough about music. When I met Ben it was the perfect fit.”

Omeara’s has its own bar and 300 capacity auditorium, beautifully designed like a traditional Parisian music hall and specially built to block out the noise of the trains rumbling overhead.

Flat Iron Square is the first complete phase of Southwark’s new Low Line, a council-led regeneration project to create a walkway, lined by railway arch-based businesses, from the north of the borough, bringing people down from the tourist-heavy areas around Bankside into Elephant and Castle. For more information on the Low Line visit the council’s website and search ‘Low Line’.





· CROSSBONES ·

Just down the road from Flat Iron Square is one of Southwark's hidden gems, and living reminder of the borough's impoverished past.

Crossbones was the paupers' graveyard for Southwark in the 18th and 19th centuries until it was closed to burials in 1853. It was the resting place for the 'Winchester Geese' – women who worked in the legal brothels around the 'Liberty of the Clink', regulated by the church. After it closed the site was forgotten until around 1996 when workmen digging the Jubilee Line, which runs underneath, made the grim discovery.

At the time, local author John Constable was writing his Southwark Mysteries about the borough and its people, which bore an uncanny resemblance to the history of Crossbones. "I thought I'd made these people and the place up," said John, "but at the same time the workers were digging up Crossbones, this derelict bit of forgotten land full of the people I was writing about. It was spooky."

After seeing the site and discovering its history, John set up the Friends of Crossbones group and in 1998 held the first of 15 Halloween at Crossbones events



to celebrate the lives of the people buried there. People created the memorial ribbons and tokens that decorate the iron fence today and in 2004 the group started The Vigils for the Outcast, that take place at 7pm every 23rd of the month. Needless to say site owners TfL have revised plans to develop on the site over the years. The garden itself was started by a security guard who was on site and grew as a grassroots movement. Eventually TfL gave the Bankside Open Spaces Trust (BOST) a lease and the site has become a secret attraction to people from all over the world.

John said: "It's a memorial to the ordinary people of the borough. There are statues everywhere in London of the great and the good but the people here may not have been great and many may not have been good, but this is not a place to judge. We welcome all communities and all faiths. It's such an inspiring place; it attracts a lot of artists but also inspires local visitors to be creative. It has such a history of brutality, abuse and horror but we've tried to make it into a place of beauty where people can express hope, love and compassion."

Find out more about Crossbones at [crossbones.org](http://crossbones.org)





## · GARDENING PROJECTS IN · SOUTHWARK

As well as managing Crossbones, BOST is supporting a number of gardening projects in the area, including on Southwark Council housing estates. Scott Maley has lived in Eynsford House for 20 years. About 5 years ago he decided to do something about the open space in front of his housing block and turned the grassed area into a blooming garden. His personal project has been expanding ever since, with funding from the council's Cleaner Greener Safer funding and support from BOST, and he is regularly joined by neighbours who take a turn in tending the increasing number of flower beds and vegetable patches.

"Every year we have an outdoor event, a little bit of a block party," said Scott. "Before this nobody knew each other, now they all do because we all come out and enjoy the garden."

The work has inspired residents in the neighbouring Balin House and Scott is now helping them start up their own garden.

Just a short walk away at Helen Gladstone Garden, more residents have come together to reclaim a small garden area for their community. The garden was created from completely derelict land back in 2007/8 but fell into neglect again when the resident leading the group passed away. After spending some time clearing and cleaning the site the group are now looking for help from the community including donations of plants or time. If you want to help out contact BOST by emailing [Julia@BOST.org.uk](mailto:Julia@BOST.org.uk)



**Greenfingereed Scott Maley**



**The Eynsford House garden**

## · SCIENCE GALLERY ·

An exciting new venture for the Borough area is the Science Gallery, due to open in early 2018 just opposite the Shard, behind London Bridge station. Part of King's College London, the gallery is aiming to bring arts and science together with a three-storey gallery and 150 seat theatre, café and shop, plus new landscaping at Guy's courtyard to create a new public square in what is believed to be London's last unreconstructed Georgian courtyard.

Director of the Science Gallery, Daniel Glaser, said: "This new space is about not only expanding King's outwards but also creating a new space for local people. We are targeting the 15 to 25 age group as other science places tend to be for a younger audience and galleries tend to aim for an older population and this age group is under-served. Having said that our content will be for all ages and everyone, particularly local residents, will be welcome to submit work and take the chance to engage with arts and science."



CGIs of how the new Science Gallery will look





# THE BEAT GOES ON IN BERMONDSEY



The summer season will be starting with a bang in Bermondsey on Saturday 1 July with the annual Bermondsey Carnival.

This year's Bermondsey Carnival will feature a fabulous collective of the great innovators of UK Reggae and Ska, who for more than half a century have been leaving their mark with their own work and collaborations with many of the biggest and most diverse names in the game.

Guests include the 'Queen of Lover's Rock' Janet Kay, the 'King of UK Ska' and member of the Specials Neville Staple, UK Reggae legend and hit producer Dennis Bovell and some very special guests from the origins of

Reggae, The Marvels, all held down by one of the UK's finest bands Indika.

Once again the event will take place in Southwark Park from 12pm to 8pm.

Bermondsey Carnival began over 100 years ago as a way of raising funds for those injured in the Boer War. It has seen many revivals since then but the current version began in 1998 with local music fans Russell Dryden and Phillip Burkett who created the Bermondsey Beat organisation to support local artists.

"With the full support of Southwark Council the event turned into something really special" Phil said. "We get around 15,000

people throughout the day and have attracted big names like the Proclaimers and Chas and Dave. I'm just happy to be involved and see people enjoy themselves."

Despite the big names, Phil emphasises the day is about supporting local bands from south east London, particularly young artists.

"We've got a young band, 14 and 15-year-olds I think, performing and it's lovely to see youngsters involved in music," Phil added. "I'd rather see a youngster pick up a guitar than a knife and if watching a great artist perform, for free, switches something in them and they think 'I want to try that' then we've won."

## · PLATFORM ·

Just behind Southwark tube station, in the black, former Cork factory building, is Platform – a temporary home to a number of creative groups active in the local community. The building is run by developers Y+I who removed squatters causing anti-social behaviour in the area and made it safe for people to work in. With the help of Southwark Council they opened the space to organisations for free, as long as they offered something for the local community. One group is the Young Vic Theatre, who use the space for their huge community outreach programme. Imogen Brodie from the group said "We hold different workshops and events. Over 1,000 local people have been through our doors and we currently have a cast of 12 local people rehearsing here for a show. It wouldn't be possible without Platform."

The sentiment is echoed by Marina Blake, part of Brainchild – an organisation who facilitate and support artists from South East London. Platform is their first space to set up and they share space with Illuminate Productions, a fellow art group who run the popular annual Merge Festival around Bankside and Drift London.



## BEER-MONDSEY

Any craft beer fans who haven't walked the Bermondsey Beer Mile are missing out, with several microbreweries now based in the area along the railway arches stretching from south Bermondsey to London Bridge. All six open their doors to the public every Saturday from 11am, letting discerning drinkers embark on a craft beer crawl. The route, actually 1.5 miles, runs from Fourpure Brewing Company on the Bermondsey Trading Estate, along the railway arches to the Southwark Brewing Company on Druid Street, near London Bridge. You can pay for the guided tour, or simply type 'Bermondsey Beer Mile' into Google Maps to see the route and stop off points.

# Camberwell

With warmer evenings and summer weekends, why not take a stroll, enjoy a café, see a show or borrow a book and relax on the green in Camberwell.

## Relax on the Green

It was Camberwell's most famous resident John Ruskin who said that "the measure of a city's greatness is to be found in the quality of its public spaces, its parks and squares". He may not have been talking about Camberwell at the time, but if he were still living here today he would be no doubt be impressed by the transformation on and around the Green.

With new housing development in Camberwell in the nineteenth century, forward thinking Victorian Camberwellians protected the Green to be the heart of the growing town of Camberwell. 150 years on, the Green has been given a new lease of life with large investment to transform and improve the area for local residents.

Last year the Green underwent a £1 million council refurbishment and now includes a new play area with more equipment, a new market square, and a bigger lawn to stretch out and relax on a warm sunny day. There is space for events or just to grab a spot for a picnic. The new walls transform the park and give it a grandeur of which Ruskin would have been proud.

But as well as the new improvements, the Green has kept many of the great features that residents know and love and that tell the story of Camberwell including the war memorial, CoolTan Arts bench, Sidney Bates VC memorial bench, butterfly gates and historic gateposts which have been restored to their former glory.



Camberwell Green

## Read a book

A short stroll from the Green is Southwark's newest library. While many councils are struggling to keep their libraries open, Southwark is proudly investing and opening new libraries. Camberwell Library has now scooped The Bookseller's Library of the Year Award at the British Book awards, aka The Nibbies. The title of Library of the Year went to Camberwell Library in recognition of its achievements to double the number of issues and new borrowers in its first full year of operation as well as great local promotions like 'Choose a Book for Camberwell Library'. [southwark.gov.uk/libraries](http://southwark.gov.uk/libraries)

## Go for a stroll

If you want to discover more of Camberwell, from this summer the Camberwell Art Trail will guide you around some of the town's hidden spots as part of the council's plan to open up pocket spaces around Camberwell. Local artist Leoni

Bullcock has been commissioned by the council to design the interactive art trail around the centre of Camberwell. With route markers designed by local artists, the trail lets you explore places you may walk past every day but never really stop to look. [camberwellarttrail.co.uk](http://camberwellarttrail.co.uk)

## Theatres

A century ago, Camberwell was a vibrant theatre district, boasting up to six theatres and music halls which pulled in crowds and the big names of the day. The Camberwell Palace of Varieties, the Metropole and the Cinematographic Theatre are now all long gone, but the theatrical tradition lives on with new, cutting edge, youth and community theatre.

The Blue Elephant Theatre on Bethwin Road produces an eclectic programme of new work across the performing arts from physical and dance theatre to new writing and revamped classics. As well as fresh



## Theatre Peckham



new talent, Blue Elephant supports great community theatre and a range of programmes for young people interested in the performing arts. Southwark Council is proud to support 'Free to Act' which provides a space for young people to come and refine their skills and then showcase them through theatre. [blueelephanttheatre.co.uk](http://blueelephanttheatre.co.uk)

Now in its brand new 200 seat theatre on Camberwell's Havil Street, Theatre Peckham encourages, supports and nurtures children and young people to discover the magic of theatre. The new theatre will present exciting new opportunities to take part and to experience the work of outstanding companies, from the Royal Court to TEDX Peckham. This summer they again have a packed programme for young people starting at the end of July, and their popular workshop programme gets up and

running again in September. Check [theatrepeckham.co.uk](http://theatrepeckham.co.uk) for more details of their programme and taster workshops.

The newest addition to Camberwell and Peckham's theatre scene is Theatre Delicatessen on Wells Way. Southwark Council has been working with Theatre Delicatessen to transform the Old Library in Burgess Park into a new arts and cultural space for the local and wider artistic community. As well as a rehearsal and events space, the new theatre can seat up to 75 people in this 100 year old building in the heart of Burgess Park. Theatre Deli support a huge mix of community arts from participatory workshops and yoga classes to cutting edge theatre, telling the story of refugees and migrants in Southwark (@HOMEfestLON). As well as theatre, the now transformed library is home to a weekly youth theatre

and a monthly professional and community theatre scratch nights. [theatredelicatessen.co.uk](http://theatredelicatessen.co.uk)

### Relax and Unwind

Whether you're longing for a latte or craving a cortado, there is a coffee to suit every taste for caffeine lovers in Camberwell. As London fast becomes the café centre of Europe, Camberwell is staking its place firmly on the coffee lover's map of the capital. In the last few years new coffee shops and cafes have been springing up all over SE5 with something to suit every taste. But more than that, many of our cafes are finding ways to celebrate Camberwell and support the local economy and community.

Old favourites like Love Walk Café are joined by new kids on the block Art Deli and Lumberjack celebrating local artists, local suppliers and the local community.

---

## GETTING CAMBERWELL BACK ON TRACK

The track that served the Camberwell Station still takes trains from Elephant and Castle to Loughborough Junction, but since the station's closure 100 years ago, Camberwell's residents have had to find other ways to travel. Local residents have long campaigned for improvements and now there may be a glimmer of light. Working with TfL and Network Rail, the Council is exploring ways to get the station open. There is a long way to go, but the Council is backing local residents to make the case for improvements and will keep you updated of the progress.

---

### Some of our favourite spots:

**LOVE WALK CAFÉ** – (81 Denmark Hill)  
– this local favourite tells the story of Camberwell through the words and ideas of local writer and poet Robert Browning. Tucking into a tasty weekend brunch, surrounded by local art of Browning's words, you can see why he loved Camberwell and made it his home.

**ART DELI** – (16 Coldharbour Lane) –  
where else can you find a café with its own resident artist? Art Deli promotes great local artists, from graduating students at the Camberwell College of Arts to many of the areas more established artists.



Art Deli



**THE PIGEON HOLE** – (2 Datchelor Place) –  
this great addition to the local café scene is as local as it gets. Spilling out onto the newly refurbished Datchelor Place, the Pigeon Hole strives to use local produce suppliers in everything from the great food to the artwork hanging on the walls. Food is seasonal and locally sourced so the cost of your coffee does not end up costing the earth.

**LUMBERJACK** – (70 Camberwell Church Street)  
–Lumberjack is a café with a difference. Not only does it deliver great coffee and some of the best cakes in London, Lumberjack is also a community interest company set up to train, equip and support young people into work. This includes the café's beautifully crafted wooden furniture made by young people at their sister company 'Goldfinch'.



# Rotherhithe and Canada Water

In the shadow of Canary Wharf, surrounded by water, and with a very different feel to the rest of Southwark, the eastern peninsula of the borough, made up of Rotherhithe and Canada Water is well worth a closer look.

## *The story so far...*

Rotherhithe is an area steeped in heritage. With a long history of seafaring and ship building, in Roman and medieval times the area formed part of the “Pool of London”, where hundreds of ships docked at the heart of London’s overseas trade. It was from Rotherhithe that the famous Mayflower ship set sail on her historic voyage to America in 1620, beginning Southwark’s remarkable link with the United States. The famous merchant ship was procured and berthed in Rotherhithe and the captain and many of the crew lived in the area. The Mayflower sailed from Rotherhithe in July 1620 with 150 passengers and crew, including the Pilgrim Fathers fleeing religious persecution, bound for the new world. Many more people from Southwark moved to America over the next few years, including the founder of Harvard University, John Harvard. Because of its strong ties, Southwark is playing a leading role in plans for the Mayflower 400 celebrations in 2020, where the UK, United States and Holland will commemorate and celebrate the 400th anniversary of the historic journey. [mayflower400uk.com](http://mayflower400uk.com)

Rotherhithe continued to play a vital role in London’s trade throughout the next 300 years as the focal point for ships coming to and from London. In 1696 the largest dock of its time was built in

**Award-winning Canada Water library**



Rotherhithe, able to accommodate 120 sailing ships. The docks were London’s link to the wider world and several were named after the origins of their customers’ cargos, such as Canada, Quebec and Russia Docks. German bombing during World War II caused massive damage to the docks with 380,000 tons of timber – the main source of production in the Surrey Docks – destroyed in a single night. The Ship and Whale pub in Surrey Quays is a great place to learn more about the local history while enjoying a craft beer or wholesome meal, or step back into the past at the Mayflower on Rotherhithe Street, the oldest pub on the Thames.

By the 1960s the shipping industry had moved on and the docks were unable to accommodate the larger vessels needed in the modern world. The docks finally closed in 1969 and the area was redeveloped, with 5,500 new homes built alongside a new shopping centre, leisure park and watersports centre. South Dock became London’s largest marina, while Canada Water and Russia Dock were turned into wildlife reserves. A new tube station was opened in 2010 connecting Canada Water to the Jubilee line and London Overground, and in 2011 Southwark Council opened the award-winning Canada Water library next to the station.



The changing face of Rotherhithe and Canada Water continues to develop, with exciting plans for a new town centre being developed by Southwark Council and British Land working with the local community. The proposals seek to integrate the existing heritage, history and character of the surrounding areas with new homes, vibrant restaurants, community facilities and a new leisure centre. The extensive plans cover the redevelopment of a 46-acre site - about the size of 24 international football pitches. The latest news on the plans can be found at: [canadawatermasterplan.com](http://canadawatermasterplan.com)

### What's new?

#### *Printworks London*

Printworks London is a ground-breaking new 5,000 capacity venue, which launched in February this year and is set to change the face of the capital's cultural scene.

Southwark Council and British Land teamed up with events specialists the Vibration Group to turn the former Harmsworth Quays printing works, which once contained Western Europe's largest print facility, into a temporary multi-purpose arts, music and

culture venue. Home to the giant printing presses that once produced the Metro and Evening Standard newspapers for London, the fully soundproofed building, spread over 119,200 sq ft, is now one of the most exciting new music and arts venues in London. The unique industrial space has been used as a location for films, fashion shows, and concerts, including a secret launch of the Gorillaz new album 'Humanz'.

With six huge events spaces arranged over multiple levels, the venue will play host to some of the biggest music and culture events in London this summer, including the Afropunk music festival in July and The Beavertown Extravaganza (a 2 day beer festival) in September. For more information go to: [printworkslondon.co.uk](http://printworkslondon.co.uk)

### What's happening this summer?

Visitors to Rotherhithe this summer will notice a distinctly Nordic atmosphere as the Scandinavian Midsummer Market returns to Albion Street, between the Finnish and Norwegian churches in Rotherhithe. All activities are free and the event will include music, food and community stalls.

### Canada Water Library

Canada Water Library has some great activities over the summer for readers of all ages. Under fives, parents and carers are invited to join Summer Rhyme Time, Thursdays 11am-11.30am between 27 July and 17 August, and Fridays 11am-11.30 25 August and 1 September. Children aged 4 to 11 can take part in the Summer Reading Challenge, taking place in all libraries across the borough. The theme of this year's Summer Reading Challenge is Animal Agents and a number of themed events will be taking place in Canada Water Library across the summer:

- Animal Carnival Masks, Saturday 15 July, 2pm to 3pm
- Make-A-Snake, Friday 28 July, 2pm to 3pm
- Sniff them Out! Friday 4 August, 2pm to 3pm
- Animal Agent ID Badge and Camera, Friday 11 August, 2pm to 3pm
- Go Barmi with Origami, Friday 18 August, 2pm to 3pm
- Safari Finger Puppets, Friday 25 August, 2pm to 3pm
- Animal Pop Ups, Friday 1 September, 2pm to 3pm



Take a selfie with Moomin or browse all the goodies on sale in the different stalls along the street. Saturday 24 June Albion Street, Rotherhithe.

Canada Water will play host to Story Jam this summer, welcoming visitors to a night of wild and wonderful stand-up storytelling. Join professional storytellers Lucy Lill and Alys Torrance for an evening of stories to tickle your ribs, raise your hair and set fire to your imagination. Expect tales as old as the hills and bang up-to-date, told every-which-way. Thursday 6 July 7.30pm The Albany Culture Space, Canada Water.

The Rotherhithe Festival returns this summer with a packed programme of music, entertainment and information. The festival is free and open to all and will offer a range of craft and food stalls, as well as information stalls from Southwark-based charities, religious and community groups. Saturday 15 July 11am-9pm, King George's Fields, Lower Road SE16.

Ever wanted to get up close and personal with a bee? Southwark Park's Nature Reserve is home to

several beehives and famous for its honey sold in different locations including Cafe Deli Felice at Albion Street. You can find out more by taking part in the Bee Experience for adults – meet at the park's office near the café at 1pm on Saturday 1st July. For those seeking tranquillity and beauty, join head gardener Lynne Olding on Sunday 16 July at 1pm for a guided tour of the Ada Salter Garden. For more information visit: [friendsofsouthwarkpark.co.uk](http://friendsofsouthwarkpark.co.uk)

### Edible Rotherhithe

Edible Rotherhithe is a new community project aiming to transform a vacant area of land into a thriving new community space. The group behind Edible Rotherhithe have raised over £15,000 through crowdfunding, which will be used to build a new garden with food growing facilities and deliver carpentry and DIY workshops to support wellbeing. The project will bring a green, vibrant and positive presence to the Silverlock estate in Rotherhithe, offering workshops to local people to learn new skills and grow their own food. For more information visit [spacehive.com/edible-rotherhithe-summer-school](http://spacehive.com/edible-rotherhithe-summer-school)

### Bridging the Gap

Pedestrians and cyclists can look forward to a new route across the river as the planned Rotherhithe bridge linking the peninsula to Canary Wharf could open by 2020. The new crossing will connect south east London to the docklands peninsula and enable around 13,000 'clean commutes' by pedestrian and cyclists every day, the equivalent of 106 full buses of passengers. For more information visit the **Transport for London website**.





# BERMONDSEY CARNIVAL

**Saturday 1 July, 12pm to 8pm**

Southwark Park bandstand, off Jamaica Road, SE16

Enjoy a family summer festival like no other, featuring Janet Kay and a host of UK reggae and ska artists – Neville Staple, Dennis Bovell and The Marvels, performing to the sounds of Indika.

Food and crafts • Rumble in the Jumble  
Reuben Bond's funfair

[southwark.gov.uk/bermondseycarnival](http://southwark.gov.uk/bermondseycarnival)

 [facebook.com/SouthwarkEvents](https://facebook.com/SouthwarkEvents)

 [@SouthwarkEvents](https://twitter.com/SouthwarkEvents)

**FREE**

 @lb\_southwark

 [facebook.com/southwarkcouncil](https://facebook.com/southwarkcouncil)

 @southwarkcouncil



The independent voice of the borough  
**Southwark  
News**

**SOUTHWARK  
PRESENTS**

*Southwark*  
Council  
[southwark.gov.uk](http://southwark.gov.uk)