

Have your
say on
parking in
your area

Thorburn Square

Parking study - Oct/Nov 2017



 @lb_southwark  facebook.com/southwarkcouncil

Southwark
Council
southwark.gov.uk

Contents

▶ What is a parking study?	3
▶ What is a parking zone?	3
▶ How can I have my say?	4
▶ Why are we conducting a parking study now?	5
▶ What are the advantages of having a parking zone on my street?	6
▶ What are the disadvantages of having a parking zone on my street?	6
▶ When would the parking zone operate?	7
▶ What is the difference between an all day and a part day zone?	7
▶ Who can purchase a permit?	8
▶ Myth busting	9
▶ What happens next?	10
▶ Further information	11



What is a parking study?

A parking study is an opportunity for the council to assess the parking stress in a certain area by asking the local residents and businesses how they view parking on their street.

This consultation document has been sent out to all postal addresses in the area asking whether you think a parking zone should be implemented on your street and if so, which days and during what times of the day.

It is important to respond to this consultation whether you own a vehicle or not. The council will analyse the responses on a road by road basis and present a report to the community council and the decision maker with a recommendation based on your response.

To help you understand what your road may look like if a parking zone is introduced, we have included a feasibility drawing which shows where parking bays can safely be provided and what type of bay it could be.

A copy of the map is available online www.southwark.gov.uk/parkingprojects

What is a parking zone?

A parking zone is a network of streets covered by parking controls. Each street is marked out with either parking bays or double yellow lines.



Permit holders only - bays solely for the use of resident /business permit holders.

Shared use parking bays – bays which can be used on a pay by phone basis and by resident/business permit holders.

Disabled bays – bays to be used only by those in possession of a Blue Badge.

Double yellow lines – waiting restrictions which allow for active loading for up to 40 minutes and indicate where parking is deemed unsafe or obstructive.

Have your say

Thorburn Square - parking study



How can I have my say?

By post

Complete the enclosed questionnaire and return it to our FREEPOST address found on the final page of this document.

Online

Complete the questionnaire online at <https://consultations.southwark.gov.uk/>

At our drop in session

Come along and talk to officers on **Thursday 2 November** from 3.30pm to 6.30pm.



St Anne's Hall
Thorburn Square
Bermondsey
SE1 5QH



Why are we conducting a parking study now?

The council has received a number of requests for parking controls to be introduced in your area. Local residents are finding it harder and harder to park near their homes; this can cause a lot of stress and inconvenience.

For the safety and convenience of local residents and businesses, the council would like to know whether you think parking could be improved in your area.

What are the advantages of having a parking zone on my street?

- ▶ Space is prioritised for local residents, businesses and their visitors.
.....
- ▶ Commuters will no longer be able to park on your street during the operating hours.
.....
- ▶ Improved access for emergency services and refuse vehicles.
.....
- ▶ 'Permit free' planning conditions can be placed on future developments so that parking stress is not increased by the construction of new residential properties.
.....
- ▶ Reduces the amount of cars parked on your street and improves air quality.
.....

What are the disadvantages of having a parking zone on my street?

- ▶ Those entitled to a permit must pay to park in the zone. This payment contributes to the enforcement of parking controls and any surplus must legally be spent on improving the public highway.
.....
- ▶ Parking can be displaced into nearby uncontrolled roads.
.....
- ▶ Parking zones are most effective at reducing commuter parking.
.....
- ▶ Street clutter (signs and lines).
.....

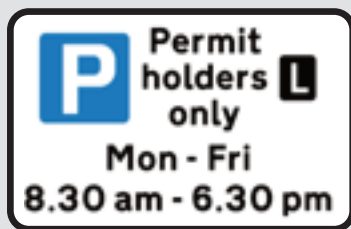
When would the parking zone operate?

It is up to you. The questionnaire asks what time you think the controls should operate. Officers will usually recommend the operating times that the majority of respondents ask for.

What is the difference between an all day and a part day zone?

All day parking zone

(e.g. 8.30am to 6.30pm)



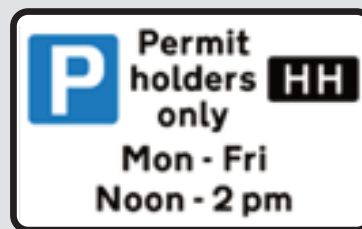
Usually successful in areas that have a high demand for parking throughout the day with pressure not just from commuters but from local attractions such as parks and leisure centres.

These zones give a high degree of priority for local residents, businesses and their visitors; reducing the negative effects of commuter parking.

Longer operating hours would mean that residents would need to have visitor permits for longer periods during the day.

Part day parking zone

(e.g. 12 noon to 2pm)



Usually successful in areas that have a sudden surge in demand for parking once a day, such as streets close to a commuter rail station.

Most of the day parking is free and unrestricted which can offer greater flexibility to those eligible for a permit and their visitors.

Part day controls are likely to result in higher pressure on parking particularly if the demand isn't just from commuters.

There is no difference in price for residents' permits between a part day and all day zone. For a part day zone, you would however need to buy fewer visitor permits which could save you money.

Who can purchase a permit?

Residents

- ▶ If you live within the parking zone and your vehicle is registered to that address, you will be able to buy a resident parking permit.
- ▶ Those living on estates have their own parking restrictions which would not change but you can still purchase a permit for on-street parking and have your say in this consultation.
- ▶ There is a maximum of three permits per household.
- ▶ Blue Badge holders get a 75% discount if they need to buy a residents' permit and a 50% discount on visitors' permits.
- ▶ Motorbikes and mopeds get a 75% discount on the price of a residents' parking permit.
- ▶ Owners of hybrid or electric vehicles get a 75% discount on the price of a residents' parking permit.

Prices →

1 month	3 months	6 months	12 months	Discounted 12 month permit
£15.74	£36.58	£67.83	£125	£31.25

The cost of an annual permit works out at 48p per day for the operation of a weekday parking zone

Businesses

- ▶ Businesses operating from an address within Southwark's parking zones may buy permits for vehicles that are essential to their business. They are not available if the vehicle is just used for commuting purposes.

Prices →

3 months	6 months	12 months
£176	£352	£577.50

On-street pay parking

- ▶ £2.70/hour (pay by phone)



Visitors

- ▶ Residents can buy visitor permits for use by their family, friends or tradespersons. You can buy permits even if you do not have a car yourself.

1x one hour stay	£1.50
1x five hour stay	£2.50
1x one day stay	£5.00
10x one hour stay	£10.00
10x five hour stay	£20.00
10x 1 day stay (1st purchase during year)	£25.00
10x 1 day stay (2nd and subsequent purchases)	£45.00

← Prices

50% discount for Blue Badge holders

Home care workers

- ▶ Home care workers from approved home care organisations can park while visiting their clients if they hold a permit.
- ▶ The permits are issued to the organisation and it is up to the organisation to ensure the permit is available to its home care workers. The permits can be transferred between staff members and each organisation can hold up to five permits.
- ▶ Each permit costs £125 for 12 months.

Professional health workers' permits

- ▶ Medical and health professionals can use these permits when making home visits to patients.
- ▶ This permit cannot be used by medical professionals as a convenient method of parking near their place of work. Each permit costs £125 for 12 months.

Permit costs correct at time of publication

For further information regarding parking permits in Southwark, please visit our website www.southwark.gov.uk/parkingpermits

Myth busting

Southwark Council is just trying to make money

No. Parking zones are introduced as a tool to manage the finite supply of parking space on our road network.

We must charge for parking permits to cover the operational costs of the zone. By law, any surplus on the parking account must be invested back into transport related improvements such as highway improvements and school crossing patrols.

This could be paid for with council tax

- ▶ Council tax and vehicle excise duty help pay for services that are available to the entire population such as education, social services and road maintenance.
- ▶ Parking zones only affect a local area and are expensive to set up and run.

The council have already made up their mind; my response won't make a difference

The council will analyse all responses on a road by road basis and make a recommendation to the decision maker accordingly.

The council must present all findings in an honest and transparent way. Any parking controls that we introduce will take into account the results of the consultation as well as existing highway safety issues in the proposed zone, feedback from emergency services, and our wider transport policies reflecting our responsibilities to air quality and active travel.

Please note that the boundary of this proposed zone is not fixed, it is possible that no zone or a smaller zone could be created depending on resident feedback through consultation, and physical constraints.

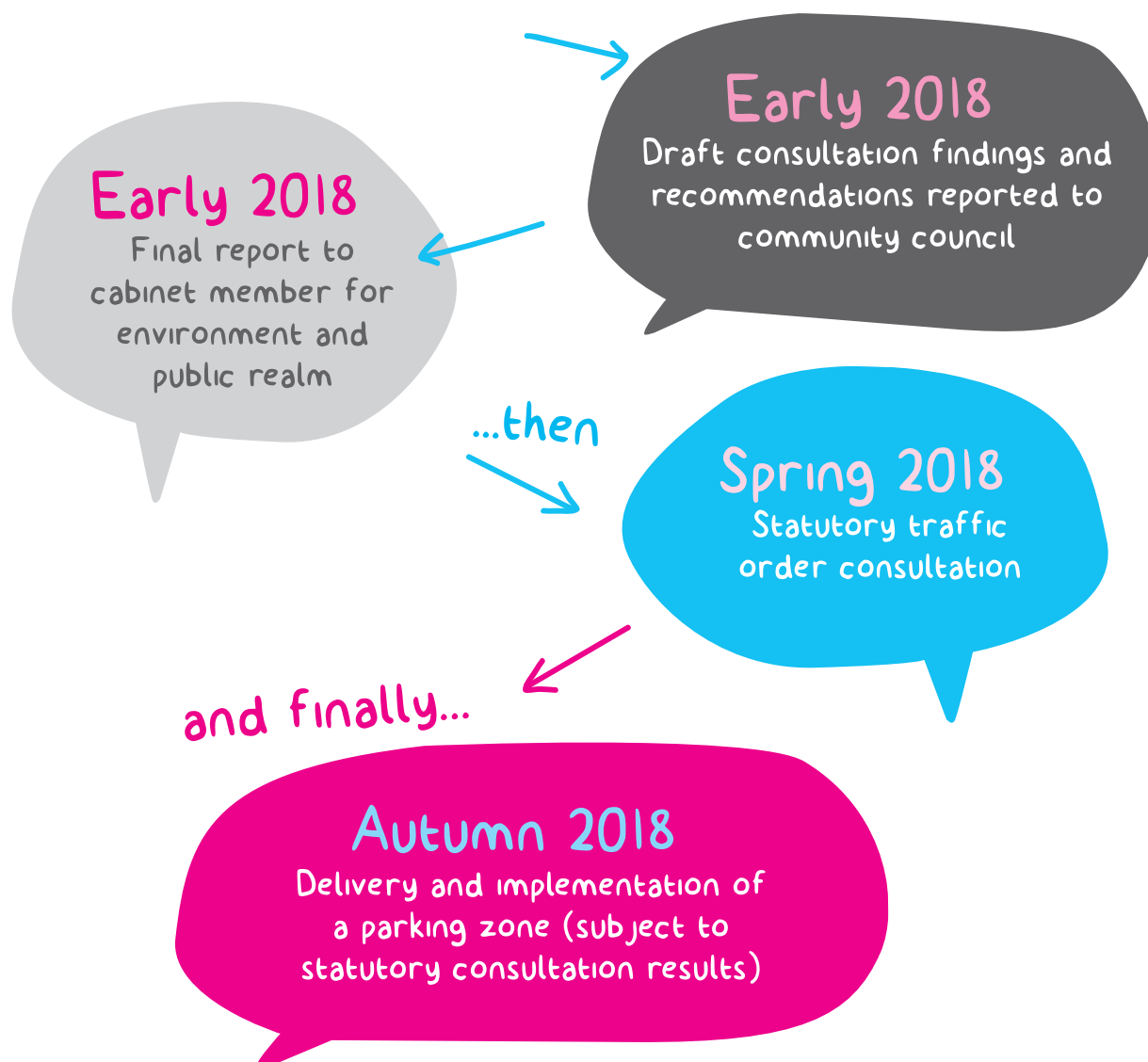
Visitors and Tradespersons will no longer visit my home

You will be able to book visitor permits online, by text and if you prefer, paper vouchers are available.



What happens next?

- ▶ We will analyse all the responses on a street by street basis and report the draft findings and recommendations to Bermondsey and Rotherhithe Community Council in January 2018, which you are welcome to attend.
- ▶ The final report and any final design will be considered by the cabinet member for environment and public realm in early 2018.
- ▶ Should a parking zone be approved, we will write to you to explain what happens next, but the stages and expected delivery dates are summarised below.



Have your say

Thorburn Square - parking study

11

Further information

www.southwark.gov.uk/parkingprojects

Telephone: 020 7525 0127

Email: highways@southwark.gov.uk

Postal responses should be sent to the following address:

FREEPOST RSDT-BHXK-SCAJ

Highways Division

Transport Projects

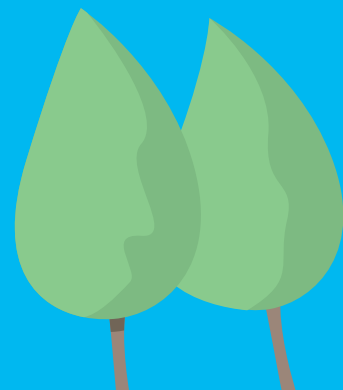
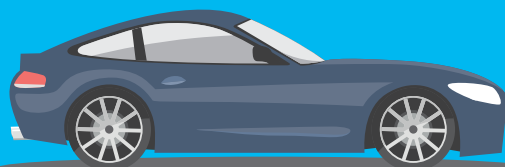
Floor 3, Hub 2

Southwark Council

PO BOX 64529

London, SE1P 5LX

Please respond by
Wednesday
15 November 2017



To arrange a translation of this leaflet please take it to:

376 Walworth Road, SE16 2NG or Ground Floor, 122 Peckham Hill Street, SE15 5JR

For a large print version of this document please contact 020 7525 0127 or email:
highways@southwark.gov.uk

Please note that we are not able to respond to all comments individually.

**Have your
say on
parking in
your area**



 @lb_southwark

 [facebook.com/southwarkcouncil](https://www.facebook.com/southwarkcouncil)

Southwark
Council
[southwark.gov.uk](https://www.southwark.gov.uk)

Thorburn Square Parking study

Consultation Questionnaire

Have your say about parking

We would like to hear your views on the proposal to introduce parking controls to your area. Please read the background document and consider the feasibility drawing before completing the questionnaire online or by returning it to us via the freepost address, by **Wednesday 15 November 2017**.

The quickest way to respond is online at www.southwark.gov.uk/parkingprojects
Postal responses should be sent to the following address:

**FREEPOST RSCT-BH XK-SCAJ, Highways Division (Transport Projects) Floor 3,
Hub 2, Southwark Council, PO BOX 64529, London, SE1P 5LX**



SECTION A — About you

It is important to know some details about you so that we can carefully analyse the results. To enable your comments to be matched to your street and to avoid any possible duplication of responses we need your full details.

1. Are you a resident or business?

Resident

Business

Name (required)

House / flat number and street name (required)

Postcode (required)

Email (optional)

SECTION B — Your parking experience

2. How many vehicles does your household/business regularly park on the street?

None (don't own a vehicle)

None (park off-street)

One

Two or more

3. What time of day do you or your visitors have difficulty parking?

Never

You

Your visitor

Monday-Friday, daytime

You

Your visitor

Monday-Friday, evening

You

Your visitor

Saturday

You

Your visitor

Sunday

You

Your visitor

SECTION C — The proposals and your views

4. Do you want a parking zone to be introduced in your street?

This is the key question that helps decide whether or not parking controls are introduced

Yes

No

Undecided

Please respond
by Wednesday
15 November 2017

@lb_southwark

facebook.com/southwarkcouncil

Council
southwark.gov.uk

5. If you answered "No" or "Undecided" to question 4, would you change your mind if a parking zone was to be proposed in only part of the study area? (i.e. if a neighbouring road was in favour, would you then want parking controls to be introduced in your street?)

- Yes No Undecided

Parking controls can cause displacement. A parking zone in a street next to yours is likely to increase demand for a space in your street.

6. If you answered "No" or "Undecided" to question 4 of this section, please can you tell us why?

Please tick all options that apply to you.

- There is not a parking problem
The cost of parking permits
Parking controls do not guarantee me a parking space outside my property
Too much additional street clutter (road markings and signs)
There is a parking problem, but a parking zone will not fix it
Other (please specify)



7. If a parking zone was introduced, which of the following hours would you like the parking zone to operate?

- All day (for example 8.30 am to 6.30pm) Part day (for example 10 am to 2pm)
Two hours during the day (e.g 11 am to 1 pm) Other (please specify)

8. If a parking zone was introduced, which of the following days would you like the parking zone to operate?

- Monday to Friday Monday to Saturday Other (please specify)

SECTION D - Your comments

9. Do you have any comments about the proposal or the consultation?

Please use this section to make any comments on the consultation process and/or suggestions for how we can improve the parking layout (position and type of parking bay) in the feasibility design.

Multiple horizontal lines for writing comments.

Replies will be used for the analysis of parking requirements in the area and for no other purpose. The information you provide will be used fairly and lawfully and Southwark Council will not knowingly do anything which may lead to a breach of the Data Protection Act 1998.

Postal responses should be sent to the following address:

FREEPOST RSDT-BHXK-SCAJ
Highways Division (Transport Projects)
Floor 3, Hub 2
Southwark Council
PO BOX 64529
London SE1P 5LX

For information about parking in Southwark
www.southwark.gov.uk/parkingprojects
Email: highways@southwark.gov.uk
Telephone: 020 7525 0127