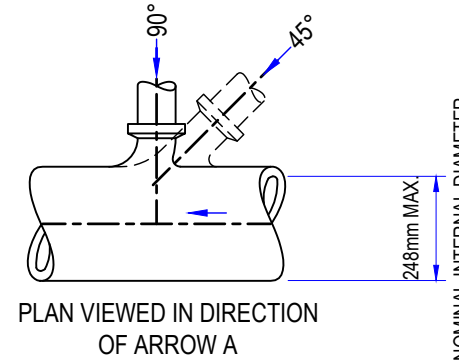
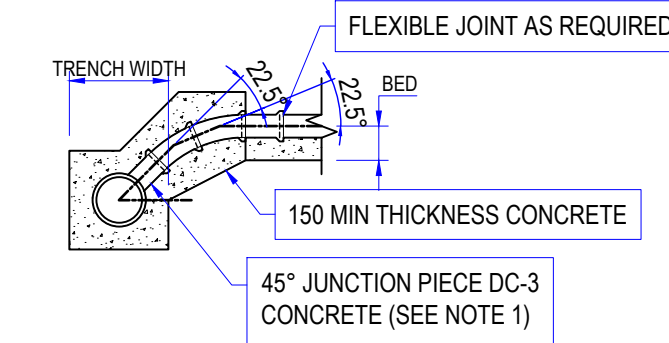
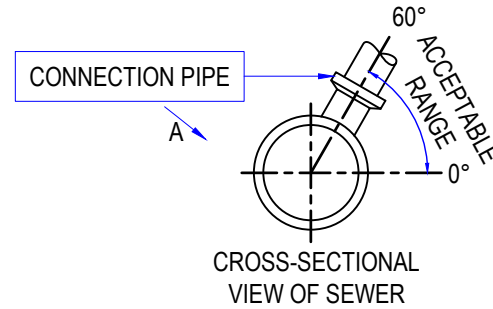
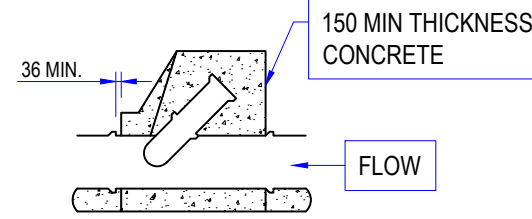
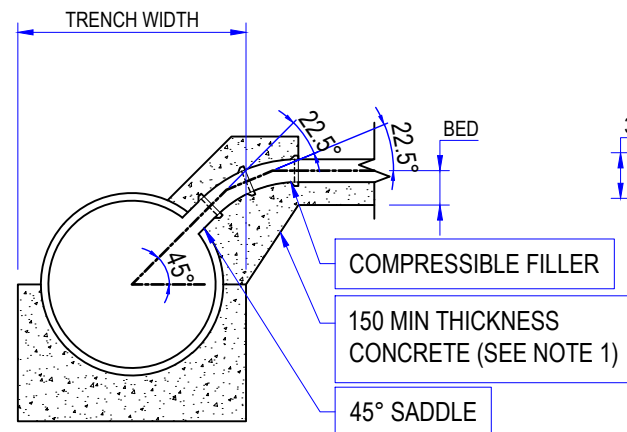


**VERTICAL AND INCLINED RISER SADDLE CONNECTION**

**TYPE 1**

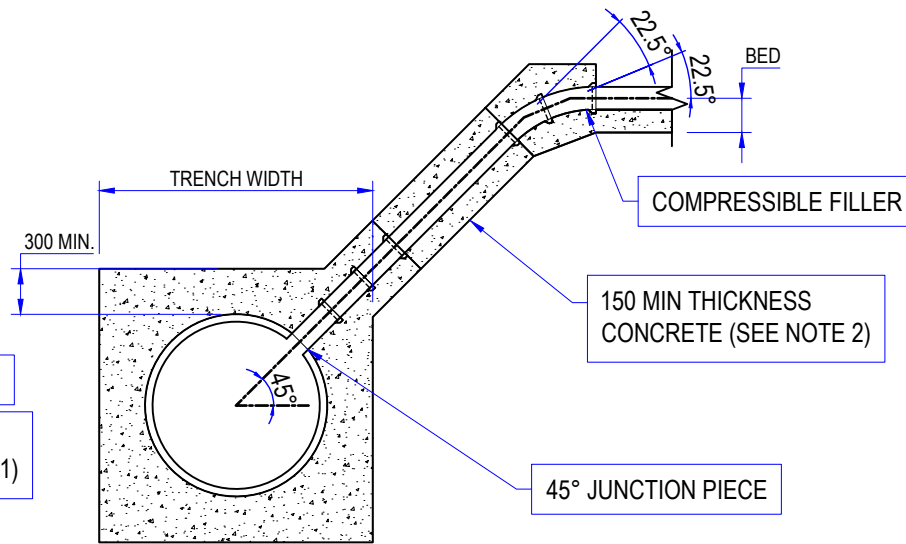


**TYPE 3**



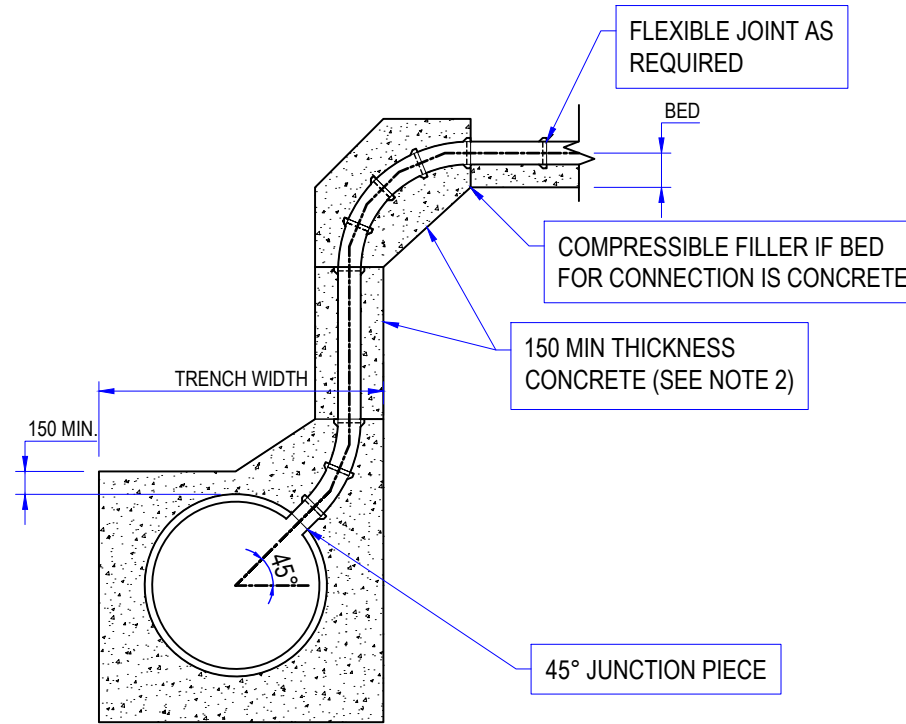
**SHALLOW SADDLE CONNECTION**

**TYPE 2**



**INCLINED RISER JUNCTION CONNECTION**  
(TO APPLY WHERE AN EXISTING CONNECTION PIPE IS NOT INTERSECTED WITHIN THE TRENCH LIMIT OR THE DIFFERENCE IN INVERT LEVELS IS GREATER THAN OR EQUAL TO 3000)

**TYPE 4**



**VERTICAL RISER JUNCTION CONNECTION**  
(TO APPLY WHERE AN EXISTING CONNECTION PIPE IS NOT INTERSECTED WITHIN THE TRENCH LIMIT OR THE DIFFERENCE IN INVERT LEVELS IS GREATER THAN OR EQUAL TO 3000)

**TYPE 5**

**NOTES**

1. All in situ concrete to be GEN3, C20 or FND3 in sulphate conditions.
2. Where the diameter of the main sewer is less than or equal to 525mm and the diameter of the connection is greater than or equal to 225mm a junction piece must be used.
3. Any connections into existing manholes or inspection chambers are subject to approval by Thames Water.

REV	DATE	REVISION DESCRIPTION / DETAILS	DRN BY	CHKD BY	APRVD BY



PROJECT: SOUTHWARK STREETSCAPE DESIGN MANUAL STANDARD DETAILS

TITLE: DRAINAGE PIPE STANDARD CONNECTION DETAILS

STATUS:	DRAFT	DRAWN:	SR
SCALE:	N.T.S.	DESIGNED:	-
DRAWING NO:	LBS/500/27	CHECKED:	GL
DATE DRAWN:	AUGUST 2017	APPROVED:	-
		REV:	R0
		DATE ISSUED:	20 Feb 2019

S:\HIGHWAYS MAINTENANCE\SSM\2. SSM\CONTENT\_ARCH\REVISED\SSM\DETAILS\DRN\STANDARD CONNECTION DETAILS.DWG