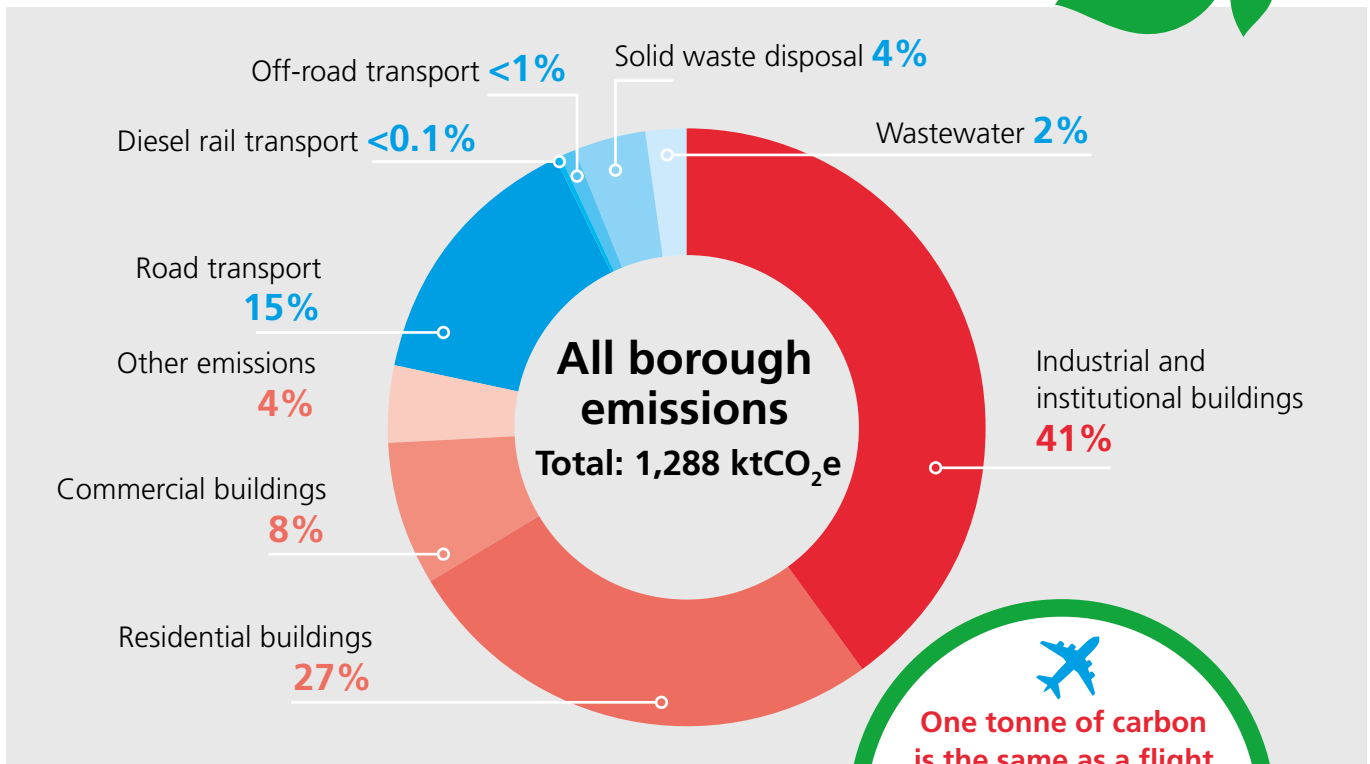




TACKLING
THE CLIMATE EMERGENCY
TOGETHER IN SOUTHWARK

OUR STRATEGY FOR A CARBON NEUTRAL SOUTHWARK BY 2030

Having declared a climate emergency in March 2019, our strategy sets out how together we can deliver a sustainable future for the people of Southwark. We have set out an ambitious plan to tackle the climate emergency, while recognising the support needed from other key players to achieve net zero by 2030. To read the full version of our strategy, please visit www.southwark.gov.uk/climate



Climate change is already having an impact in Southwark. Extreme weather, air pollution, and disruption to food supply all impact on Southwark residents. Poorer and less advantaged communities are more at risk and have less resource to mitigate against its impact.

The Covid-19 pandemic has also exacerbated these existing inequalities and highlighted the urgent need for a response to future crises that puts people first. We understand that climate change is not only an environmental issue, but also an issue of **social justice**.

In Southwark, we have already made progress reducing greenhouse gases. Data indicates our carbon emissions have reduced by around 40% between 2005 and 2018. In 2017, analysis showed that Southwark's emissions were the equivalent of **1,288 kilotons** of carbon dioxide, which we are using as our baseline.

One tonne of carbon is the same as a flight from a London airport to the east coast of the US, or travelling about 3,500 miles in the average car.

However, progress is not fast enough and the scale of action needed is vast. Independent analysis estimated that to become carbon neutral by 2030 would cost around **£3.92bn**. We will need major government support to back the action that we take.

We will also need to work with bodies such as City Hall and the Government to ensure that we have the powers and resources to make radical change. They have powers the council does not, such as restricting vehicles that can come into the borough.

Southwark's commitment to tackling the climate emergency opens up enormous opportunity for the borough. By putting social justice at the centre of our climate strategy, there is an opportunity to create a **better and a fairer Southwark**. Driving a green economy will help people find good jobs as well as delivering a sustainable future. Climate change also negatively affects our health in a variety of ways, and there is a huge opportunity to reduce the wide health inequalities in our borough by tackling it.

After publishing our draft strategy in July 2020, we engaged with residents to improve our approach. Your feedback was positive, and has helped us to improve how we engage and how we create a plan where everyone has a chance for their voices to be heard. We are continuing to engage with residents through our Citizens' Jury, which you can read more about here: <https://www.southwark.gov.uk/environment/climate-emergency>.

GREENER BUILDINGS

Southwark is a diverse borough with approximately **15,000 businesses** and a truly vibrant population that comes from being in central London. As well as homes, there are large buildings including hospitals, universities, large business and retail space. The borough is growing and regenerating, creating opportunities for the council and its residents. We want to continue to grow, creating a green economy that delivers the co-benefits of economic growth, reduced inequality and carbon reduction. We have already installed heat pumps in buildings, solar panels on libraries and brought in tough new climate rules for developers. Read more about our 'Greener Buildings' actions on page 34 of the full strategy.



Southwark is a diverse borough with approximately

**15,000
BUSINESSES**



We have installed nearly

**4KM OF
CYCLE ROUTES**



We have

**80,000
TREES**

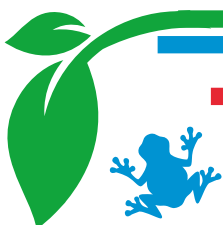
ACTIVE AND SUSTAINABLE TRAVEL

We want all residents in Southwark to have access to green ways of getting around the borough, through improved public transport links, increased availability of cycle lanes and priority routes for pedestrians. For example, we have installed nearly **4km of cycle routes** since March 2019 including **117 cycle hangers**. Where people still need to use cars, we hope to encourage using them less or switching to electric vehicles. Read our 'Active and Sustainable Travel' actions on page 41 of the full strategy.

THRIVING NATURAL ENVIRONMENT



Southwark's award-winning parks, open spaces and built environment provide homes for a range of common and rare wildlife, including birds, bats, invertebrates and plants. We value our parks and trees as a vital component of the borough's landscape. We have **80,000 trees** that bring joy to people and help clean our air. You can find our specific 'Thriving Natural Environment' actions on page 47 of the full strategy.



A CIRCULAR ECONOMY WITH GREEN JOBS



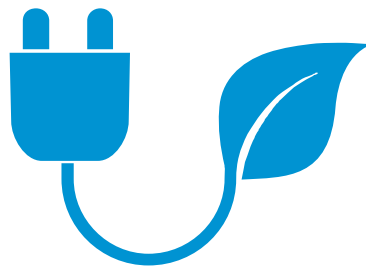
What our residents and businesses use, eat, and wear, and how these things are made and transported - is a large and sometimes hidden driver of carbon emissions. We also need to think about how we dispose of the things we use and how the work we do impacts on the climate. Southwark has the highest recycling rate in inner London at **35% of waste recycled** yet there is still much more we can all do to reduce waste, reuse as much as possible and recycle. You can find our specific 'A Circular Economy with Green Jobs' actions on page 53 of the full strategy.



In Southwark
35% OF WASTE IS RECYCLED

RENEWABLE ENERGY

Generating energy from renewable sources can help reduce our dependency on non-renewable sources like fossil fuels. As well as reducing our own energy use **by moving to 100% renewable electricity for council operations**, we must press the government to move faster in decarbonising the national grid so that it can supply the green energy that we need. You can find our specific 'Renewable Energy' actions on page 59 of the full strategy.



We are moving to
100% RENEWABLE ELECTRICITY
for council operations

DELIVERING OUR PRIORITIES

To deliver these priorities we will **be inclusive, be transparent and be ambitious**

Our approach will rely on us working in partnership to deliver these priorities. At local, regional and national levels we will be a voice for change, lobbying Government for greater action and funding.

We will support businesses to take action. This includes our local businesses as well as national and international companies in the borough. As we transition to a sustainable future, we will invest in green jobs. We will target support most where it reduces inequality and delivers wider benefits to our community.

We will engage, educate and empower our community. We will celebrate and represent every part of our community by ensuring everyone is part of the conversation. This is the only way we make the change we need together.

This is a summary of the council's climate change strategy. To read the full version visit www.southwark.gov.uk/climate

If you would like to get in touch with us with any ideas to support this work, or to share any inspiring things you are already doing, please email climateemergency@southwark.gov.uk

