



Old Kent Road Area Action Plan

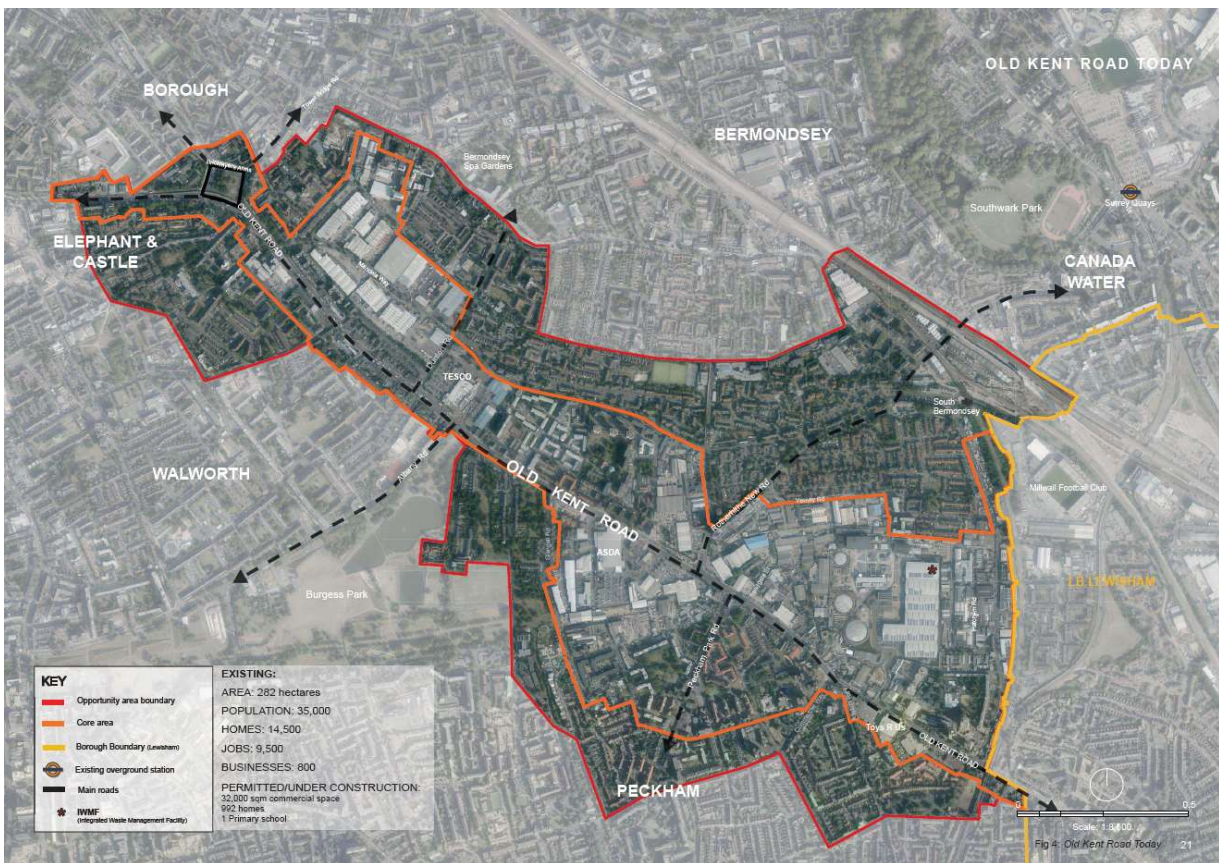
February 2025

Draft Statement of Common Ground

1. Introduction

1. This document is a record of the progress made by the council during the process of planning for strategic cross-boundary matters relating to the draft Old Kent Road area action plan. It forms part of the evidence required to demonstrate that the council has complied with the duty to cooperate. It is a living document and will be updated post Regulation 19 consultation and prior to submission for an examination in public.
2. The area covered by the statement is the Old Kent Road opportunity area (see Figure 1 below), which is an area identified in the London Plan 2021 and Southwark Plan 2022 as having potential for significant growth in homes and jobs.

Figure 1 Old Kent Road opportunity area



3. The key matters which will be addressed by the statement include general conformity with the London Plan, transport networks (Bakerloo Line Extension, improvements to bus services and healthy streets approach), heritage, health facilities, housing targets, employment land and climate emergency.

4. The council has a growth partnership arrangement with GLA, TfL and LB Lewisham. At officer level this group meets every 6 weeks. The council will use this grouping to agree the statement of common ground with these organisations. A joint statement with other statutory organisations will be agreed prior to an examination in public. The most recent representations made by statutory bodies on the draft area action plan are set out in the Consultation Report https://www.southwark.gov.uk/sites/default/files/2024-12/c_consultation_report.pdf. These representations detail any agreement reached to date and areas of outstanding disagreement. In addition to these representations, prior to the adoption of the Southwark Plan, there was an agreement reached with the GLA on the phased release of Strategic Industrial Land <https://www.southwark.gov.uk/planning-environment-and-building-control/planning/planning-policy-and-guidance/old-kent-road-1> .
5. The AAP has an extensive evidence base <https://www.southwark.gov.uk/planning-environment-and-building-control/planning/planning-policy-and-guidance/old-kent-road-3>. This includes the Strategic Transport Study, Surface Transport Study and Bus Demand and Capacity Study all prepared by TfL. The council has worked with TfL, LB Lewisham, GLA and Central London Forward to prepare an Economic Impact Assessment of the Bakerloo Line Extension as well as a funding study. The council and TfL will prepare a joint background paper on the transport evidence underpinning the AAP for the examination in public. The council will also publish background papers summarising evidence on other matters including infrastructure (health facilities, school places, district heating) and building heights.
6. The with regard to housing, it is noted that because the AAP covers a part of the borough it does not contain a housing requirement. Instead it seeks to deliver the housing targets and site allocations which are set out in the Southwark Plan 2022. Likewise with regard to employment and workspace, the plan delivers the site allocations and strategic policies set out in the Southwark Plan 2022.